

Toilet
Partitions



ONLY ASI OFFERS THE LARGEST SELECTION OF DESIGNER OPTIONS IN THE INDUSTRY.



Moisture
Guard™
Plastic
Laminate P. 10

Powder
Coated P. 8

Stainless
Steel P. 9

Phenolic P. 13

Introducing the largest collection of partitions from one source. Since 1960, ASI® Global Partitions has been providing high-performance toilet partitions that meet or exceed specifications, require little maintenance, withstand the rigors of some very difficult environments, and provide a lifetime of low-cost of ownership. Only ASI® offers the most comprehensive collection of toilet partitions available anywhere. Welcome to choice—welcome to the new ASI.

Shipped In
48
HOURS

Solid Plastic, Phenolic, Powder Coated, Stainless Steel or Moisture Guard™ Plastic Laminate partitions ready to ship **within 48 hours.**



Solid Plastic P.12

Alpaco Collection P.5

ALPACO ELEGANCE PARTITIONS

Elegance Partitions in Yellow with stainless steel hardware and pedestals. With sophisticated details, Elegance is our most graceful and refined partition system.



Support System

Pilasters and side panels are supported by the top rail using stainless steel clips.



Headrail Corner Assembly

The corners of the stainless steel headrail are held by a 90 degree curved stainless steel bracket.

Available in a wide range of Wilsonart® and Formica® colors and finishes.

The Alpaco Collection is made of Phenolic.



A PIECE OF EUROPE—MADE IN AMERICA

THE NEW ASI ALPACO™ COLLECTION

Introducing the ASI Alpaco™ Collection—a marriage of European design and engineering with the American manufacturing ingenuity you have come to expect from ASI—with the shortest lead times in the industry. The Collection is made from Phenolic and offers sleek hardware, robust construction, and zero sightline doors and pilasters that meet in a flush finish with routed, overlapping closures for guaranteed privacy.

The **Alpaco Collection** Includes:

Elegance Partitions **P.4-5** | **Classic** Partitions **P.6** | **Kids** Partitions **P.7**



Beveled Edges

All edges are beveled and have an engineered polished black finish.



Occupancy Indicator

Occupancy latch with an emergency unlatching device indicates when cubicle is occupied.



Flush Finish Self-Closing Doors

All of our self-closing doors and pilasters meet in a flush finish with routed, overlapping closures for guaranteed privacy.



Designer Pedestals and Hardware

Our partitions are equipped with attractive, adjustable pedestals for quick and easy leveling. Total adjustability range is 2".

Dramatic lines, bold hardware and stunning adjustable pedestals define our **Classic collection.**

A marriage of simplicity and functionality creates a collection that has ASI's exclusive Ultimate Privacy™ at its heart. Zero sightline doors and pilasters meet in a flush finish with routed, overlapping closures for guaranteed privacy.



Dramatic Pedestals

Adjustable pedestals allow for any inconsistencies in the floor to be addressed and leveled.

Available in a wide range of Wilsonart® and Formica® colors and finishes.

The Alpaco Collection is made of Phenolic.

Kids collection is a durable and fun partition system for nursery and elementary school washrooms.

Our child friendly partitions are engineered to offer the best and safest features. Door and panel heights are sized to be more appropriate for children, and doors are finished at the top in a semi-circle for a playful look and feel. For safety, doors have only fixed knobs, so caretakers have access to the partitions.



Safety Features

Rubber profile inserted between the doors and pilasters prevent injury to hands and fingers.

Available in a wide range of Wilsonart® and Formica® colors and finishes.

The Alpaco Collection is made of Phenolic.

Powder coated steel with a honeycomb core for solid construction and sound attenuation.

The powder coating and galvanized steel on these partitions provide quality and economy. The finish is resistant to wear, fading and scuffing. It is easily cleaned and wiped dry. For standard features see pages 18-19.

Options: Stainless Steel Stirrup Brackets, Stainless Steel Door Hardware, Continuous Anodized Aluminum and Stainless Steel Brackets, Continuous Piano Hinges and Ultimate Privacy™



Shipped In
48
HOURS

STANDARD FINISH:



The durability and elegance of type 304 stainless steel complements any washroom.

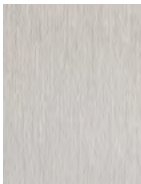


Stainless steel toilet partitions provide a modern look and retain their beauty indefinitely. By adding a textured finish, increased resistance to vandalism can be achieved. Available in all four mounting styles. For standard features see pages 18-19. **Options:** Stainless Steel Stirrup Brackets, Stainless Steel Door Hardware, Wood Core, Continuous Anodized Aluminum and Stainless Steel Brackets, Continuous Piano Hinges and Ultimate Privacy.™



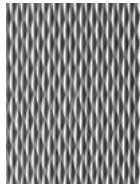
Shipped In
48
HOURS

STANDARD FINISH:



#4 Satin

OPTIONAL FINISH SELECTIONS:



Diamond

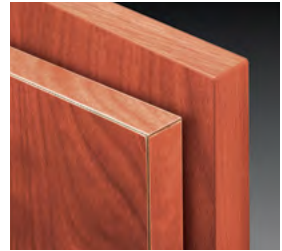


Leather Grain

Partitions above shown in Ultimate Privacy.™

Moisture Guard™ plastic laminate, the finish of choice when aesthetics are essential.

Introducing the new Plastic Laminate Partitions with Moisture Guard™ Edge Banding fuses with the substrate creating a seamless beveled profile that eliminates any unsightly black lines that appear in standard Plastic Laminate. ASTM tests on Moisture Guard™ Edge Banding confirms 3X greater durability with increased resistance to moisture and humidity than standard Plastic Laminate. Standard Plastic Laminate is also available, visit asi-globalpartitions.com

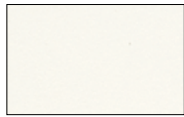


To save you even more time our Easy Stall Shoe speeds up the installation process. Easy Stall Shoe in Floor Anchored/Overhead Braced only.

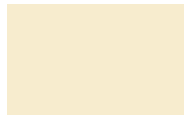
48 IN 48 COLORS | HOURS

MOISTURE GUARD™ PLASTIC LAMINATE COLOR SELECTION:

NEW 48 Colors in 48 Hours. We have increased our selection of Moisture Guard™ Edge Banding to **48 colors** and patterns to offer you even greater choice in durability and elegance... **AND** we will ship you these colors in **48 hours*** from the time you approve your order.



Mission White
1010



Almond
4000



Sand
4010



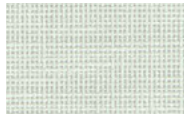
Khaki Brown
4040



Taupe
9096



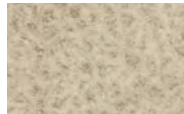
Green Slate
5093



**Crisp Linen
1150



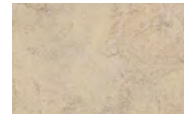
Neutral Glace
1130



Western Suede
4110



Burgundy
5450C



Natural Canvas
4410



**Stepping Stone
9570



**Casual Linen
4538



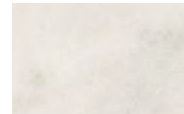
**Satin Stainless
5030



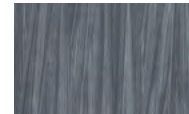
Natural Tigris
4611



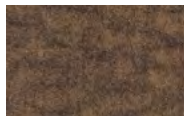
Tungsten EV
4801



Carrara Bianco
1096



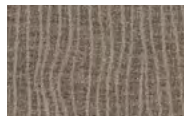
**Burnt Strand
5107



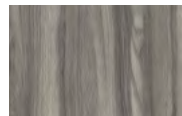
**Windswept Bronze
9292



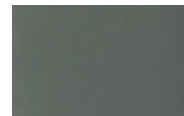
**Gray Linen
3750



**Earthen Warp
4580



**Afternoon Nap
9120



Smoke
8450



Autumn Indian
9150



Navy Blue
7450



Spectrum Blue
5051



Brittany Blue
7010



Navy Graphix
7318



Silver Gray
3000



Dove Gray
3010



Folkstone Celesta
3300



Canyon Zephyr
3713



**Vapor Strandz
5039



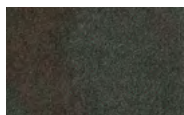
**Windswept Pewter
3849



Storm Solidz
3542



Graphite Graphix
3020



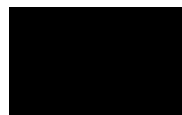
Rustic Slate
5088



Smoke Quarstone
3350



Graphite
2150



Black
2000



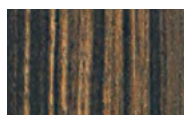
**Maple
9918



**Cherry
9954



**Mahogany
9939



**Ebony
9500



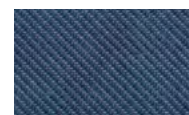
**Asian Night
9550



**Washed Knotty Ash
9438



**Weathered Ash
9842



**Reclaimed Denim Fiber
5271

† 48 Colors in 48 hours are only available in Floor Anchored/Overhead Braced.

Actual colors may vary slightly from those shown due to limitations in the printing process.

* Should you require different colors we will provide partitions in the Standard Plastic Laminate construction with the 2-year warranty.

** Directional Pattern—Pattern on panels over 60" wide will run perpendicular to pattern on doors and pilasters. Patterns shown cropped from full size sheet, contact us for additional references.

Solid Plastic (HDPE) partitions are environmentally safe, mildew, rust, graffiti and impact resistant.

Solid Plastic partitions are water resistant, unaffected by steam or high humidity and have passed the NFPA 286 fire test criteria. For standard features see pages 18-19. **Options:** Stainless Steel Stirrup Brackets, Stainless Steel Door Hardware, Continuous Piano Hinges, Continuous Anodized Aluminum and Stainless Steel Brackets, Aluminum Door Hardware and No-Sight Privacy Strips. Our most popular colors are also available in 100% post-consumer recycled material.

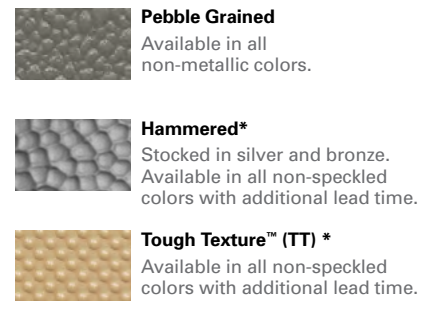


**Shipped In
48
HOURS**

SOLID PLASTIC (HDPE) COLOR SELECTION:

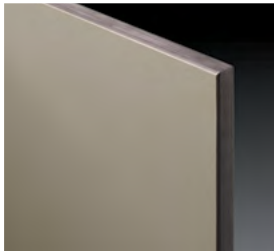


AVAILABLE FINISHES:



**Compartments limits also apply to the non-stocked colors. Consult color card for more definitive color matching.*

Phenolic provides superior strength, durability and a broad variety of patterns and colors.



Phenolic partitions sheets are fused at high temperature and pressure. In addition to strength and serviceability, a wide range of colors provides limitless design flexibility. Available in Color-Thru (Class "A" Fire Rated Material standard) and Black Core. **Options:** Continuous Piano Hinges, Continuous Anodized Aluminum and Stainless Steel Brackets, Custom Colors and No-Sight Privacy Strips.



Shipped In
48
HOURS

BLACK CORE COLOR SELECTION:*



COLOR-THRU SELECTION:



*Shipped in 48 Hours available for Black Core Phenolic. Consult color card for more definitive color matching.

**Directional Pattern – Pattern on panels over 60" wide will run perpendicular to pattern on doors and pilasters. Patterns shown cropped from full size sheet, contact us for additional references.

SIX DISTINCT MATERIALS TO MATCH ANY AESTHETIC AND PERFORMANCE NEED



Stainless Steel

Gleaming beauty indefinitely. The elegance of stainless steel complements any design scheme. Incorporates the known corrosion resistant benefits of type 304 stainless steel. Satin or textured finish. Available in all styles.

Warranty 5 years*

Cost Index 255 (355)**



Solid Plastic (HDPE)

Highly resistant to common cleaning agents as well as to moisture, mildew and graffiti. Ideal choice for busy public facilities and high humidity applications—never needs painting and will not easily dent, rust or delaminate. Available in a wide variety of colors and mounting styles. Floor Anchored/ Overhead Braced, Ceiling Hung and Floor and Ceiling Anchored styles.

Warranty 25 years*

Cost Index 190**



Powder Coated Steel

High-tech quality at an economical price. Thermoset hybrid powder finish on galvanized steel is highly resistant to corrosion, grease, acids, caustics, marks and stains. A broad range of contemporary colors to complement any interior. Available in all styles.

Warranty 3 years*

Cost Index 100**



Moisture Guard™ Plastic Laminate

Plastic Laminate Partitions with Moisture Guard™ Edge Banding fuses with the substrate creating a seamless beveled profile that eliminates any unsightly black lines that appear in standard Plastic Laminate. Available in 48 colors/patterns.

Warranty 5 years*

Cost Index 110**



Black Core Phenolic

Holds up even under severe moisture conditions from showers, pools and saunas, or when maintenance includes hosing down toilet partitions. Ideal for where vandalism is a problem. In a full color spectrum—all with black edges. Available in all styles.

Warranty 25 years*

Cost Index 200**



Color-Thru Phenolic

Color-Thru Phenolic lives up to its name, with surface color through and through. This product is impact, scratch and graffiti resistant. It also has excellent screw-holding power and all the advantages of traditional Phenolic performance. Available in all styles and attractive colors.

Warranty 25 years*

Cost Index 250**

* See full warranty on website: asi-globalpartitions.com (2-year warranty for non Moisture Guard™ Plastic Laminate).

** By assigning our materials a designation of 100, you can estimate how much more or less an alternate profile will cost.

ASI GLOBAL STYLES



Floor Anchored/Overhead Braced

This economical and sturdy mounting style installs just about anywhere. An anodized aluminum anti-grip head rail secures partitions firmly to the walls.



Floor Anchored

Simplified construction permits ease of installation anywhere. For concrete floors only: 2" minimum penetration into floor required.



Ceiling Hung

When used together with wall-hung fixtures, the entire floor is accessible for efficient cleaning. Structural steel ceiling supports are necessary to assure proper installation.



Floor to Ceiling Anchored

This mounting style is extremely stable and durable as pilasters are anchored into both the concrete floor and the structural ceiling support.



Alpaco Classic

Zero sightlines, doors and pilasters that meet in a flush finish rebated closure all ensure guaranteed privacy. Style and stability have not been sacrificed in this collection, with robust octagonal head rails.



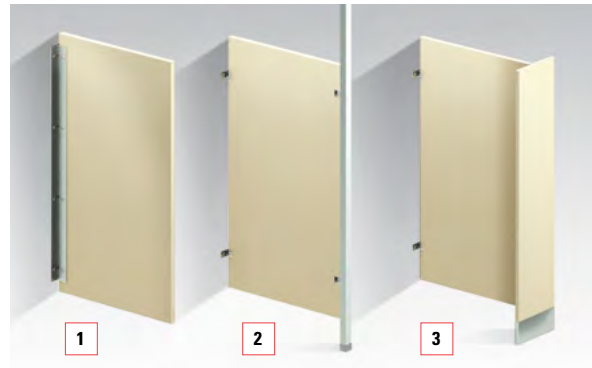
Alpaco Elegance

The signature top rail provides structural stability and style. If you're looking for strength, comfort, aesthetics and durability, the Elegance collection has it all.



Ultimate Privacy™

Our Ultimate Privacy design features doors and panels up to 72" tall and eliminates sightlines into the compartments around the doors.*



Urinal & Privacy Screens

1 Wall-Hung Screens

Available in three standard heights: 42", 48" and 58".

2 Post-Mounted Screens

1¾" sq. aluminum post in Floor Mounted or Floor to Ceiling Mounted.

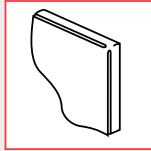
3 Pilaster-Mounted Screens

Available in Floor Mounted, Ceiling Hung, Floor to Ceiling or Overhead Braced.

*Shown in Stainless Steel, also available in Phenolic and Powder Coated Steel in all mounting styles.

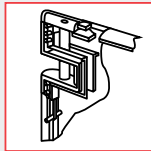
ASI GLOBAL CONSTRUCTION FEATURES

Stainless Steel & Powder Coated Steel



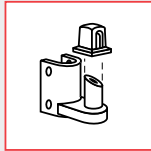
WELDED CORNER

Corners of panels, pilasters and doors are welded to each other and to the adjacent face sheets.



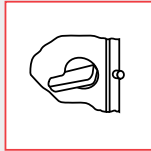
UPPER DOOR BRACKET

Internal part of the door. A pin goes through door and bracket for three-point bearing and operates in a nylon bushing in upper hinge bracket.



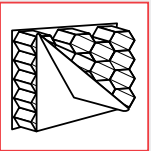
BOTTOM DOOR HINGE

Gravity-positioning hinge provides safe, durable and maintenance free support.



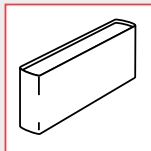
CONCEALED LATCH

With emergency access and ADA lever handle.



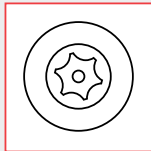
HONEYCOMB CORE

Made of cellular honeycomb. This type of core provides strong construction and sound attenuation.



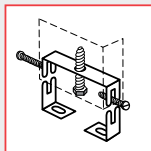
SHOE CONSTRUCTION

One-piece stainless steel, type 304, with #4 satin finish trim shoes are hemmed top and bottom for rigidity and sleek appearance.



VANDAL-RESISTANT FASTENERS

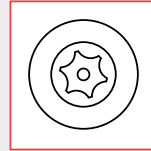
Special driver installs fasteners which virtually eliminates unauthorized removal and ensures easy installation.



PILASTER MOUNTING

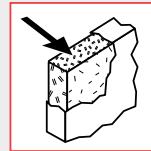
Pilaster adjustments, with floor-mounted jack-leveling device is standard on floor anchored/ overhead braced pilasters.

Moisture Guard™ Plastic Laminate



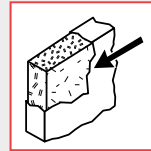
VANDAL-RESISTANT FASTENERS

Special driver installs fasteners which virtually eliminates unauthorized removal and ensures easy installation.



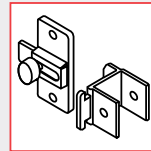
CORE

Particle board core is 45# density to resist warping and ensure a smooth surface.



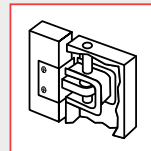
VERTICAL-GRADE LAMINATE

The thickness meets the most demanding partition specification.



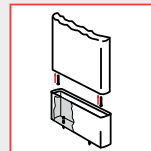
EMERGENCY ACCESS

Meets ADA requirements. Slotted keeper coupled with gravity hinges allows access in an emergency.



DOOR HINGES

Wrap-around mounting and through bolting for vandal resistance.



EASY-STALL SHOE

For floor anchored overhead braced.

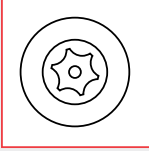
Easily adjusted leveling bolt.

True concrete anchor screws designed for lasting holding power.

Anchor rated at 2770 lbs. pullout strength.

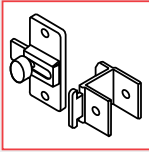
Fabricated of type 304 stainless steel.

Solid Plastic (HDPE)



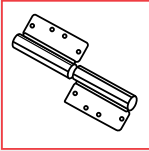
VANDAL-RESISTANT FASTENERS

Special driver installs fasteners which virtually eliminates unauthorized removal and ensures easy installation.



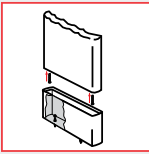
EMERGENCY ACCESS

Meets ADA requirements. Slotted keeper coupled with gravity hinges allows access in an emergency.



8" ALUMINUM WRAP-AROUND HINGE

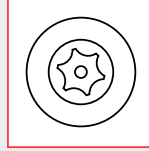
Mainstream choice.
Heavy-duty.



EASY-STALL SHOE

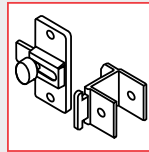
For floor anchored overhead braced.
Easily adjusted leveling bolt.
True concrete anchor screws designed for lasting holding power.
Anchor rated at 2770 lbs. pullout strength.
Fabricated of type 304 stainless steel.

Phenolic



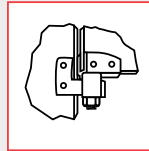
VANDAL-RESISTANT FASTENERS

Special driver installs fasteners which virtually eliminates unauthorized removal and ensures easy installation.



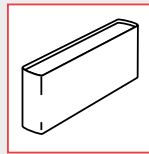
EMERGENCY ACCESS

Meets ADA requirements. Slotted keeper coupled with gravity hinges allows access in an emergency.



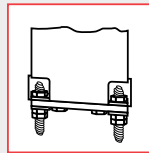
VAULT HINGE

Rugged, attractive wrap-around hinge. Extra strong for heavy-duty installations.



SHOE CONSTRUCTION

One-piece stainless steel, type 304, with #4 satin finish trim shoes are hemmed top and bottom for rigidity and sleek appearance.



FLOOR STUD MOUNTING SYSTEM

Heavy-duty $\frac{5}{16}$ " diameter mounting studs adjust height and level pilasters by turning the locknut adjusters.
For use with stainless steel shoe.

ASI GLOBAL MATERIAL SELECTION GUIDE

Legend: ▲ = Available ■ = Standard ■ = Optional

	SOLID PLASTIC (HDPE)	POWDER COATED STEEL
ENVIRONMENTAL DESIGN (LEED v3.0)		
RECYCLED CONTENT		
MR 4.1 - Post Consumer; Standard (Optional)	0% (100%)	67%
MR 4.2 - Post Industrial; Standard (Optional)	33% (0%)	14%
LOW-EMITTING MATERIALS		
IEQ 4.1 - VOC Content of Adhesives (Below defined limits)	N/A	Yes
IEQ 4.2 - VOC Content of Paint (Below defined limits)	N/A	Yes
IEQ 4.4 - Free of Added Urea Formaldehyde Resins	Yes	Yes
APPLICATION		
Fire Rating; Standard (Optional)	NFPA 286 / B	A
Vandal Resistance	High	Average
Ease of Maintenance	High	Average
Wet Area Suitability	High	Low
RELATIVE COST (Powder Coated Steel = 100%)	190%	100%
WARRANTY	25 Years	3 Years
COLOR / FINISH OPTIONS	18 Standard Colors	15 Standard Colors
MOUNTING STYLES		
Floor Anchored/Overhead Braced	▲	▲
Floor Mounted		▲
Ceiling Hung - Maximum Height	96" (Requires X Bracing)	108"
Floor-to-Ceiling - Maximum Height	120"	113"
Ultimate Privacy		▲
HARDWARE		
STIRRUP BRACKETS		
Chrome Plated Zamac		■
Stainless Steel		■
Aluminum	■	
CONTINUOUS BRACKETS		
Stainless Steel	■	■
Aluminum	■	■
HINGES		
Zamac Wrap-Around / Gravity Bottom		■
Stainless Steel Wrap-Around / Gravity Bottom		■
Vault	■	
Continuous Stainless Steel	■	■
8" Aluminum Wrap-Around	■	
Integral	■	
LATCHES		
Zamac Concealed		■
Stainless Steel Concealed		■
Zamac Surface Mount Slide		■
Stainless Steel Surface Mount Slide	■	■
HD Slide w/6" AL Wrap-Around Strike	■	
Brushed Finish Chrome Plated Zamac	■	
TRIM SHOES		
Stainless Steel	■	■

TYPE 304 STAINLESS STEEL STANDARD FINISH (W/OPTIONAL TEXTURED FINISH)		BLACK CORE PHENOLIC	COLOR-THRU PHENOLIC	MOISTURE GUARD™ PLASTIC LAMINATE
72%		N/A	N/A	N/A
18%		27%	15%	95%
Yes		N/A	N/A	Yes
N/A		N/A	N/A	N/A
Yes		Yes	Yes	Yes
A		B (A)	A	C
Average (High)		High	High	Low
Low (Average)		High	High	Average
Low		High	High	Average
255% (355%)		200%	250%	110%
5 Years		25 Years	25 Years	5 Years (2 Years For Non Moisture Guard™ Plastic Laminate).
#4 Satin (Diamond, Leather Grain)		10 Standard Colors	6 Standard Colors	48 Standard Colors
▲		▲	▲	▲
▲		▲	▲	▲
108"		108" (X Bracing Required Above 96")	108" (X Bracing Required Above 96")	108" (X Bracing Required Above 96")
120"		120"	120"	120"
▲		▲	▲	
■				■
■		■	■	■
■		■	■	■
■				■
■		■	■	■
■				■
■		■	■	■
■				■
■		■	■	■
■				■
■		■	■	■
■				■
■		■	■	■
■				■
■		■	■	■
■				■
■		■	■	■
■				■

ONLY ASI CAN SUPPLY EVERYTHING FOR YOUR WASHROOM

And only ASI Group offers the industry's most cutting-edge hand dryers, soap dispensers, baby changers, paper towel dispensers, partitions, lockers, visual display products and much, much more.



Shipped In
48
HOURS

We are laser focused on delivering you exactly what you need—when you need it. Visit asi-globalpartitions.com for details. No one beats our 48 hour delivery.

ASI Global
Partitions

© 2019 ASI Global Partitions

900 Clary Connector
Eastanollee, GA 30538
Phone: 706.827.2700
Fax: 706.827.2710
Web: asi-globalpartitions.com

ASI107880519