

**Washroom
Accessories**



ASI *American Specialties, Inc.*

TURN YOUR WASHROOM INTO A SHOWROOM WITH THE NEW ASI

Welcome to the new ASI—the world’s leading manufacturer of commercial washroom accessories. So what makes ASI so unique? For starters, we offer the most comprehensive selection of washroom accessories available anywhere. And we offer them from one source. We design, engineer, and manufacture all of our products to work together seamlessly. Welcome to our products to work together seamlessly. Welcome to choice, welcome to innovations, welcome to the new ASI.

How to use this brochure:

This brochure offers three ways to navigate our comprehensive portfolio of washroom accessories:

- 1 Navigate by collections**—a family of complimentary-designed products, see pages 6 & 7.
- 2 Navigate by specific product category**, see pages 8 & 9.
- 3 Navigate the index by product category or model number**, see pages 110-113.





SO WHY CHOOSE US? THE ANSWER IS SIMPLE

Only ASI designs, engineers, and manufactures fully integrated washroom accessories, partitions, lockers, and visual display products from one source.

The most innovative collection of visual display products in the industry

ASI offers a broad array of surface options, including Porcelain, Glass, Cork, Fabric Tac®, VinylTac, and Forbo® that can be framed in a variety of trim systems and configurations. Add to that, the highest quality mobile units, directories, display cases, and coat racks—all from one source.

Endless options in lockers

A wide range of colors in materials including steel, solid plastic, and phenolic. Every configuration from single-tier to Z-Lockers, and styles from athletic lockers to cubbies.

A wide variety of baby safe solutions

Tested with up to 400 lb. load capacity—the highest in the industry.

No other manufacturer can do it all—it's that simple

Only ASI offers the most complete collection of products for the modern washroom, locker room, and any space where you need visual display products.

Stability—peace-of-mind one warranty

Why juggle multiple manufacturers' warranties when you can have just one? With ASI you have the peace of mind that comes with dealing with a leader.

The industry's most cutting-edge soap dispensers

From single dispensers to multi-feed systems, only ASI offers the easiest soap dispensers to install and maintain.





From dispensers and much more

ASI offers the largest collection of hand dryers, paper towel dispensers, and washroom accessories in the industry.

A wide array of mirror options

ASI offers mirrors for every application. Choose from channel frame, frameless, angle frame, tilting mirrors, and our exclusive Velare™ BehindThe Mirror cabinet.

And much, much more

This is just the beginning of what ASI has to offer. And if you need a product you don't see here, just call us at 914.476.9000 or visit www.asigroup.us

Customer Centric Technology - ASI Access and Design Studio

Our 24/7 Customer ServiceTool to create and track orders; to enter quotes and convert quotes to orders and to view invoices.

Shower seats

A wide variety of folding and fixed shower seats that are easy to install and meet ADA safety standards.

Our innovations come from listening to your needs

At a recent professional sports complex project, an architect wanted a specific product. We customized and delivered hundreds of one-of-a-kind soap dispensing systems to meet their deadline.

For discerning customers with prestigious projects

ASI Group products are featured in some of the world's most prominent projects. Whether you are at Apple's Headquarters in California, or Disneyland in Shanghai, chances are you've seen ASI.

The latest collection of partitions

ASI offers the most comprehensive collection of solid plastic, plastic laminate, powder coated, phenolic, and stainless steel partitions from one source. European style and Ultimate Privacy™ configurations add functionality to elegance.

48-hour delivery—no one beats that

We are laser focused on delivering you exactly what you need—when you need it.



OUR COLLECTIONS

SIX DISTINCT COLLECTIONS TO MATCH ANY AESTHETIC AND PERFORMANCE NEED



P. 10

1 **NEW** Piatto™ Collection

ASI's distinctive new collection of washroom accessories is designed to stand apart by not standing out—making it integral with your washroom design. Each washroom accessory is designed to be completely recessed, lying perfectly in the plane of the washroom wall without any protrusion. All hinges are concealed and so is the internal latching system, leaving no visible hardware.



P. 14

2 **NEW** Velare™ Collection

An elegant space-saving solution, designed to tuck away clutter, this wall mounted stainless steel cabinet conceals an automatic soap dispenser, and your choice of a paper towel dispenser or high-speed hand dryer. The sophisticated design is ideal for iconic buildings—the dispensing capacity makes it ideal for any high-traffic environment. Another reason to specify ASI!



P. 18

3 **Roval™** Collection

This elegant, durable, and exceptionally functional collection is engineered for high-profile settings. Subtle curves, one-piece seamless doors, and flush tumbler locks, along with fully removable waste cans, strong hinges, an integral locking system, and easy installation, make this collection ideal for the most aesthetically demanding applications.

While ASI offers hundreds of individual accessories, we have simplified the specifying process with our six distinct collections to serve your project's individual needs.

And each of our six collections was designed as a suite of products that complement one another. Welcome to aesthetics and function in perfect harmony. Welcome to the new ASI.



4 Profile™ Collection

This visually appealing collection with rounded edges is manufactured with highly durable 16 gauge stainless steel doors and 20 gauge cabinets. Concealed heavy-duty $\frac{3}{16}$ " (5 mm) diameter piano hinges ensure smooth and long-lived operation, and rimless keyed-alike flush tumbler locks offer strong security with an elegant look.



5 Simplicity™ Collection

This elegant collection combines seamless construction and crisp design lines to provide strength and comfort, beauty and durability, form and function. 18 gauge doors and 20 gauge cabinets conceal heavy-duty $\frac{3}{16}$ " (5 mm) diameter piano hinges. All units are keyed alike.



6 Traditional™ Collection

The traditional collection has easily passed the test of time. These high-value products feature 22 gauge double-pan doors incorporating a "no-flex" structural fiberboard core. 22 gauge cabinets, heavy-duty $\frac{3}{16}$ " (5 mm) diameter piano hinges, and keyed-alike tumbler locks complete this broad product line.

OUR PRODUCTS

WELCOME TO THE SINGLE LARGEST COLLECTION OF WASHROOM ACCESSORIES ANYWHERE—BAR NONE

Why mix and match disparate washroom accessory products from different manufacturers, when our company has designed, engineered, and manufactured everything you need from one source? Welcome to integrated solutions. Welcome to the new ASI.



P. 50

Hand Dryers



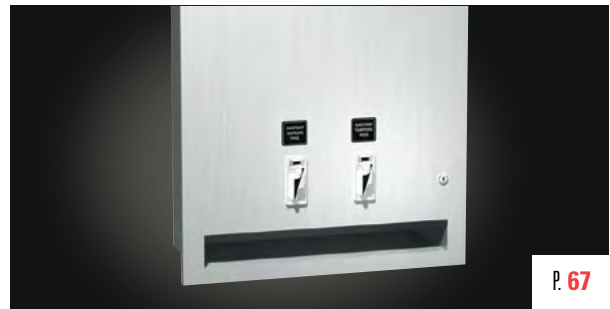
P. 56

Soap Dispensers



P. 62

Mirrors



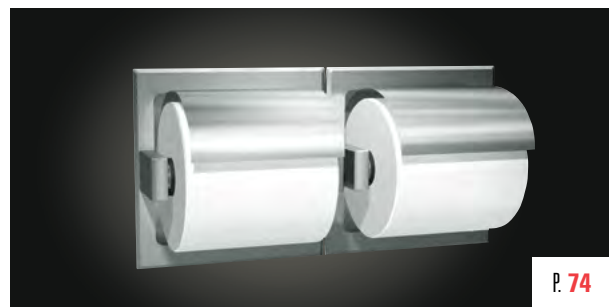
P. 67

Feminine Hygiene Vendors and Disposals



P. 70

Specialty Accessories

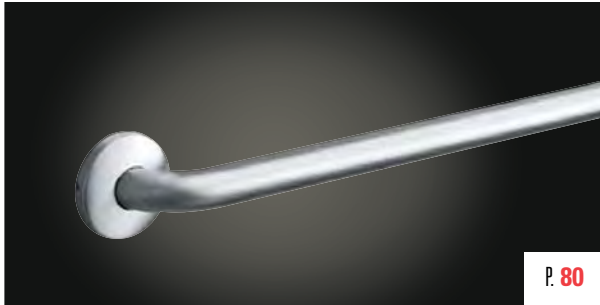


P. 74

Toilet Tissue Dispensers



Our Paper Towel Dispensers, Waste Receptacles, and Combination Units can be found within our collections on pages 10–49.



P. 80

Grab Bars



P. 82

Shower/Tub Accessories



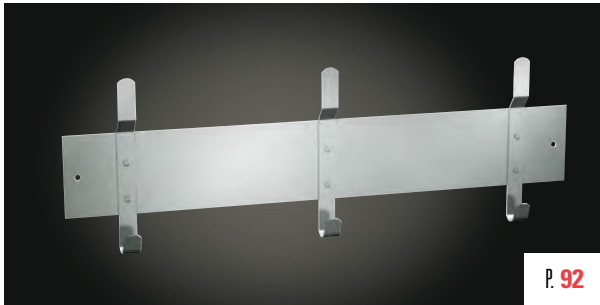
P. 86

Baby Changing Stations



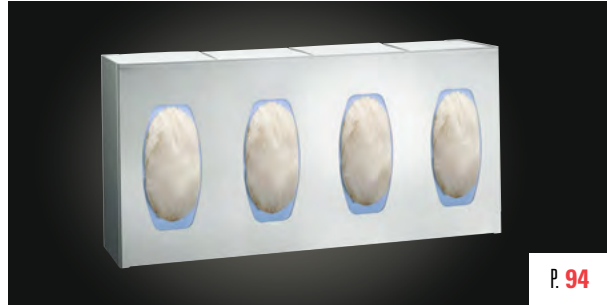
P. 90

Shelves



P. 92

Custodial Accessories



P. 94

Healthcare Accessories



P. 100

Hospitality Accessories



P. 106

Security Accessories

SHOWN: 6462-41 PAPER TOWEL
DISPENSER AND WASTE RECEPTACLE



NEW

Piatto™ Collection

ASI's distinctive new collection of washroom accessories is designed to stand apart by not standing out—making it integral with your washroom design. Each washroom accessory is designed to be completely recessed, lying perfectly in the plane of the

washroom wall without any protrusion. The high-end door hinges, used to achieve this precise coplanar fit, are easily adjusted in the field. ½" (13 mm) Phenolic doors in matte black or white, close silently and effortlessly, and add an air of sophistication.

WHAT MAKES THE PIATTO™ COLLECTION UNIQUE?

Completely
RECESSED

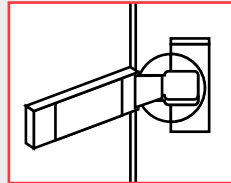
UNIQUE DESIGN

The Piatto™ collection is designed to be coplanar to the wall- an ASI exclusive.

PHENOLIC
Doors

ELEVATED STYLE— A NEW CHOICE

Phenolic doors in matte black or white were created to accentuate your washroom design.



INNOVATIVE HINGES

3-way, adjustable hinges allow flexibility in the field and are concealed along with all other hardware.

Virtually
GAPLESS
Fit

STANDS APART BY BLENDING IN

A combination of technology and design ensures a perfect fit adding to your design by not detracting from it.

PIATTO™ COLLECTION



THREE WAY ADJUSTABLE HINGE

An innovative hinge technology allows cabinet and doors to be completely recessed, with no protrusions from the plane of the wall surface. Doors can be adjusted in the field.

- Phenolic Doors
- Completely Recessed Mounting
- Concealed Internal Spring-Loaded Latch
- No Visible Hardware





6474 PIATTO™ WASTE RECEPTACLE

This unit comes with a phenolic door and concealed hardware, and is designed to be *completely* recessed into the plane of the washroom wall. Stainless steel receptacle holds 12 gal. (46 L) of washroom waste materials. For matte black phenolic door use suffix -41, for white use -00.

Unit Size:

17³/₄" x 40" x 6⁹/₁₆"
(438 x 1016 x 166 mm)

Finished Wall Opening*:

17⁵/₁₆" x 40¹/₁₆" x 6¹¹/₁₆"
(440 x 1018 x 170 mm)



64672-1 PIATTO™ COMPLETELY RECESSED 3-IN-1 PAPER TOWEL DISPENSER, HIGH SPEED HAND DRYER, AND WASTE RECEPTACLE

This unit comes with a phenolic door and concealed hardware, and is designed to be *completely* recessed into the plane of the washroom wall. Features a <15 second automatic hand dryer, dispenses 400 standard C-fold or 500 standard multi-fold paper towels with a waste capacity of 6.8 gal. (26 L). Dryer has 5-year warranty. 110-120V. Available in 208-240V (-2). For matte black phenolic door use suffix -41, for white use -00.

Unit Size:

15³/₈" x 55³/₈" x 7¹⁷/₃₂"
(391 x 1407 x 191 mm)

Finished Wall Opening*:

15⁷/₁₆" x 55⁷/₁₆" x 7⁹/₈"
(392 x 1408 x 194 mm)

Decibel Level: 68.9-74.3 dB-A @ 2M



6457 PIATTO™ PAPER TOWEL DISPENSER

This unit comes with a phenolic door and concealed hardware, and is designed to be *completely* recessed into the plane of the washroom wall. Well-suited for smaller washroom with less space and traffic. Dispenses 350 C-fold or 475 multi-fold paper towels. For matte black phenolic door use suffix -41, for white use -00.

Unit Size:

12³/₄" x 17¹/₄" x 4⁹/₁₆"
(324 x 438 x 116 mm)

Finished Wall Opening*:

12¹³/₁₆" x 17⁵/₁₆" x 4³/₄"
(325 x 440 x 121 mm)



64696A/AC PIATTO™ AUTOMATIC ROLL PAPER TOWEL DISPENSER AND WASTE RECEPTACLE

This unit comes with a phenolic door and concealed hardware, and is designed to be *completely* recessed into the plane of the washroom wall. No-touch unit dispenses a pre-set length per cycle from 8" (203 mm) wide, 800 ft. (244 m) long rolls. Includes 9.9 gal. (37.3 L) stainless steel waste receptacle. Battery powered. Available in AC Powered (AC). For matte black phenolic door use suffix -41, for white use -00.

Unit Size:

16¹/₁₆" x 41¹/₄" x 9¹¹/₁₆"
(408 x 1048 x 246 mm)

Finished Wall Opening*:

16¹/₈" x 41⁵/₁₆" x 10"
(410 x 1049 x 254 mm)

All stainless steel is type 304 with satin finish, unless otherwise noted.

**All Piatto™ models require finished wall openings for installation. The edges of the finished wall opening are meant to be visible after installation, hence edges must be flat, square, straight, and plumb—no rough or unsightly edges.*



6462 PIATTO™ PAPER TOWEL DISPENSER AND WASTE RECEPTACLE

This unit comes with a phenolic door and concealed hardware, and is designed to be *completely* recessed into the plane of the washroom wall. Dispenses 600 C-fold, 800 multi-fold, or 1,100 single-fold towels. 9 gal. (34 L) stainless steel waste receptacle. Towel dispensing slot has hemmed-in rolled edge for snag-free dispensing and user safety. For matte black phenolic door use suffix -41, for white use -00.

Unit Size:

17¼" x 54" x 6⁹/₁₆"
(438 x 1372 x 166 mm)

Finished Wall Opening*:

17⁵/₁₆" x 54¹/₁₆" x 6¹¹/₁₆"
(440 x 1373 x 170 mm)



6467 PIATTO™ PAPER TOWEL DISPENSER AND WASTE RECEPTACLE

This unit comes with a phenolic door and concealed hardware, and is designed to be *completely* recessed into the plane of the washroom wall. Dispenses 600 C-fold or 800 multi-fold paper towels. Towel dispensing slot has hemmed-in rolled edge for snag-free dispensing and user safety. Includes 4.24 gal. (16 L) stainless steel waste receptacle. For matte black phenolic door use suffix -41, for white use -00.

Unit Size:

13" x 55" x 4⁹/₁₆"
(330 x 1397 x 116 mm)

Finished Wall Opening*:

13¹/₁₆" x 55¹/₁₆" x 4¹¹/₁₆"
(332 x 1399 x 119 mm)



64623 PIATTO™ PAPER TOWEL DISPENSER AND WASTE RECEPTACLE

This unit comes with a phenolic door and concealed hardware, and is designed to be *completely* recessed into the plane of the washroom wall. Well-suited for the smaller washroom with less space and traffic. Dispenses 350 C-fold or 475 multi-fold paper towels. Includes 2.2 gal. (8.4 L) stainless steel waste receptacle. For matte black phenolic door use suffix -41, for white use -00.

Unit Size:

14¼" x 28" x 4⁹/₁₆"
(362 x 711 x 116 mm)

Finished Wall Opening*:

14⁵/₁₆" x 28¹/₁₆" x 4¹¹/₁₆"
(364 x 713 x 119 mm)



645210A/AC PIATTO™ AUTOMATIC ROLL PAPER TOWEL DISPENSER

This unit comes with a phenolic door and concealed hardware, and is designed to be *completely* recessed into the plane of the washroom wall. Proximity sensing no-touch unit dispenses an owner-adjustable length per cycle from 8" (203 mm) wide, 800 ft. (244 m) long rolls. Battery powered. Available in AC Powered (AC). For matte black phenolic door use suffix -41, for white use -00.

Unit Size:

16¹/₁₆" x 28" x 9¹³/₁₆"
(408 x 711 x 248 mm)

Finished Wall Opening*:

16¹/₈" x 28¹/₁₆" x 10"
(410 x 713 x 254 mm)

SHOWN: 0661-T VELARE™ BTM SYSTEM – STAINLESS
STEEL CABINET WITH FRAMELESS MIRROR, LIQUID SOAP
DISPENSER, AND PAPER TOWEL DISPENSER



NEW

Velare™ Collection

An elegant space-saving solution, designed to tuck away clutter, this wall mounted stainless steel cabinet conceals an automatic soap dispenser, and your choice of a paper towel dispenser or high-speed hand dryer

(Dryer Model 0196—equipped with a HEPA Filter). The sophisticated design is ideal for iconic buildings—the dispensing capacity makes it ideal for any high-traffic environment. Another reason to specify ASI!

WHAT MAKES THE VELARE™ COLLECTION UNIQUE?



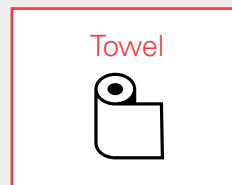
ARTFULLY CONCEALED

Consumables are concealed behind the mirror to accentuate the overall style.



CONCEALED SOAP DISPENSER

High-capacity foam or liquid soap dispenser makes Velare™ ideal for high frequency use restrooms.



PAPER TOWEL OPTION

Velare™ provides paper towels as an option for drying hands. 500 towel capacity.



HAND DRYER OPTION

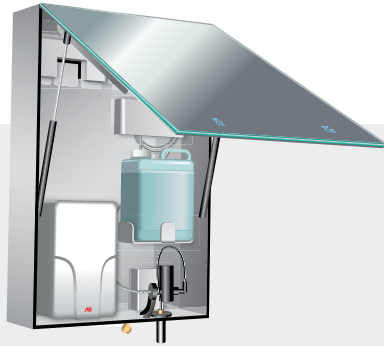
Optional high-speed, low-decibel hand dryer is equipped with a HEPA filter.

VELARE™ COLLECTION

ALL-IN-ONE CABINET HOUSES AN AUTOMATIC SOAP DISPENSER, AND YOUR CHOICE OF PAPER TOWEL DISPENSER OR HAND DRYER—NOW AVAILABLE WITH MIRROR FILLERS FOR FLEXIBILITY.

Backlit icons etched into the frameless mirror direct the user to their choice of soap and drying option. The self-contained design reduces hazards associated with wet floors. The 1/4" thick tempered glass mirror supported by twin, damped gas springs, opens up to 90° for easy maintenance.





0661-1 VELARE™ STAINLESS STEEL CABINET WITH FRAMELESS MIRROR, LIQUID SOAP DISPENSER, AND HIGH-SPEED HAND DRYER (110-120V)

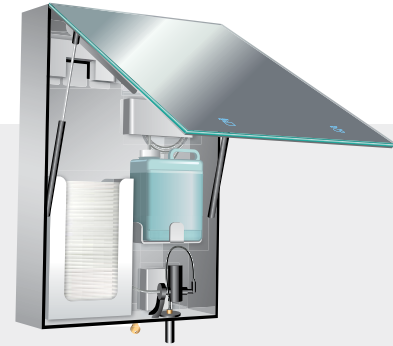
Designed with elegance and safety in mind, this wall mounted stainless steel cabinet conceals a hands-free automatic liquid soap dispenser with a 1.5 gal (6 L) capacity and a high-speed hand dryer (110-120V) equipped with a HEPA filter.

MODEL OPTION:

0661-2 Velare™ Stainless Steel Cabinet with Liquid Soap and Hand Dryer (208~240V).

Overall Dimensions:

23⁵/₈" x 35⁷/₁₆" x 7⁹/₁₆"
(600 x 900 x 192)



0661-T VELARE™ STAINLESS STEEL CABINET WITH FRAMELESS MIRROR, LIQUID SOAP DISPENSER, AND PAPER TOWEL DISPENSER

This wall mounted stainless steel cabinet conceals a hands-free automatic liquid soap dispenser with a 1.5 gal (6 L) capacity and paper towel dispenser with a 500 towel capacity.

Overall Dimensions:

23⁵/₈" x 35⁷/₁₆" x 7⁹/₁₆"
(600 x 900 x 192)



0661-FM-14 VELARE™ STAINLESS STEEL FRAMELESS MIRROR FILLER MODULE

Wall mounted stainless steel cabinet filler module provides spacing between other Velare™ BTM modules where needed. Mirror is made from 1/4" (6 mm) thick frameless tempered glass conforming to ASTM C-1048 with pencil edges and eased corners with SS sheet intermediate stiffener and SS back plate with integral welded support mounts.

Overall Dimensions:

14³/₄" x 35⁷/₁₆" x 7⁹/₁₆"
(375 x 900 x 192)



0661-FM-23 VELARE™ STAINLESS STEEL FRAMELESS MIRROR FILLER MODULE

Wall mounted stainless steel cabinet filler module provides spacing between other Velare™ BTM modules where needed. Mirror is made from 1/4" (6 mm) thick frameless tempered glass conforming to ASTM C-1048 with pencil edges and eased corners with SS sheet intermediate stiffener and SS back plate with integral welded support mounts.

Overall Dimensions:

23¹/₄" x 35⁷/₁₆" x 7⁹/₁₆"
(591 x 900 x 192)



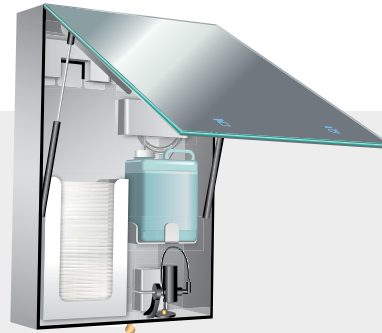
0663-1 VELARE™ STAINLESS STEEL CABINET WITH FRAMELESS MIRROR, FOAM SOAP DISPENSER, AND HIGH-SPEED HAND DRYER (110-120V)

This wall mounted stainless steel cabinet conceals a hands-free automatic foam soap dispenser with a 1.5 gal (6 L) capacity and a high-speed hand dryer (110-120V) equipped with a HEPA filter.

MODEL OPTION:

0663-2 Velare™ Stainless Steel Cabinet with Foam Soap and Hand Dryer (208~240V).

Overall Dimensions:
23⁵/₈" x 35⁷/₁₆" x 7⁹/₁₆"
(600 x 900 x 192)



0663-T VELARE™ STAINLESS STEEL CABINET WITH FRAMELESS MIRROR, FOAM SOAP DISPENSER, AND PAPER TOWEL DISPENSER

This wall mounted stainless steel cabinet conceals a hands-free automatic foam soap dispenser with a 1.5 gal (6 L) capacity and paper towel dispenser with a 500 towel capacity.

Overall Dimensions:

23⁵/₈" x 35⁷/₁₆" x 7⁹/₁₆"
(600 x 900 x 192)

Aptly named **Velare™**, which means to veil, this elegant, space saving mirror cabinet lives up to its name by concealing a soap dispenser (liquid or foam) and your choice of a high-speed hand dryer or paper towel dispenser.

Velare™ minimizes the hazards of water spilling on the floor by housing soap and drying components directly above the sink. The mirror, made of 1/4" thick tempered glass with pencil edges, is supported by twin damped gas springs, which allows the cabinet to be opened up to 90° for easy maintenance.

Backlit icons etched into the mirror intuitively indicate soap and drying options making this cabinet both elegant and easy to use. This marriage of elegance, safety, and functionality makes Velare™ ideal for a wide range of building types, from sophisticated corporate headquarters to high traffic washrooms in entertainment centers and airports.



SHOWN: 20469 RECESSED
PAPER TOWEL DISPENSER
AND WASTE RECEPTACLE



Roval™ Collection

Engineered for high-profile settings, this collection adds elegance, durability, and exceptional functionality to any washroom without becoming the focal point.

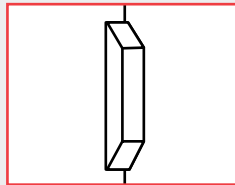
This collection is ideal for the most aesthetically demanding applications. All features are functionally superior, quickly installed, and easily maintained.

WHAT MAKES THE ROVAL™ COLLECTION UNIQUE?



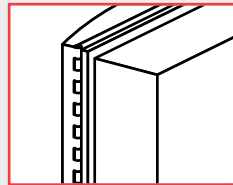
STAINLESS STEEL CONSTRUCTION

Our collection is constructed of stainless steel, which is tough, durable, stain-resistant, and easy to clean.



INTEGRAL LOCKING SYSTEM

Our durable, integral locking system prevents tampering and theft.



STAKED PIANO HINGES

Our heavy-duty, staked piano hinges provide security and a neat appearance, and they stand up to heavy use.



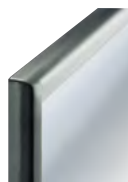
REMOVABLE WASTE RECEPTACLE

Fully removable waste cans allow contents to be easily discarded for efficient ongoing maintenance and cleanliness.

ROVAL™ COLLECTION



MANUAL AND AUTOMATIC PAPER TOWEL/ TOILET TISSUE DISPENSERS



MIRRORS



AUTOMATIC HAND DRYERS



204623 ROVAL™ RECESSED PAPER TOWEL DISPENSER AND REMOVABLE WASTE RECEPTACLE

Dispenses 350 C-fold, 475 multi-fold paper towels. 3.0 gal. (11.2 L) removable stainless steel waste receptacle with a tumbler lock. 22 gauge stainless steel door in a satin finish with a flush lock and a heavy-duty $\frac{3}{16}$ " staked piano hinge on door.

MODEL OPTION:

204623-9 Surface mounted with 9" stainless steel collar.

Unit Size:

$12\frac{3}{4}$ " x 28" x $6\frac{1}{2}$ "
(325 x 710 x 165 mm)

Wall Opening:

$11\frac{1}{4}$ " x $26\frac{7}{16}$ " x $3\frac{15}{16}$ "
(286 x 672 x 100 mm)



20469 ROVAL™ RECESSED PAPER TOWEL DISPENSER AND WASTE RECEPTACLE

Dispenses 600 C-fold or 800 multi-fold paper towels. 14.8 gal. (56 L) removable waste receptacle. Door made of 18 gauge stainless steel with a heavy-duty $\frac{3}{8}$ " staked piano hinge.

MODEL OPTION:

20469-9 Surface mounted with 9" stainless steel collar.

Unit Size:

$17\frac{3}{8}$ " x $56\frac{1}{16}$ " x 9"
(441 x 1424 x 228 mm)

Wall Opening:

$15\frac{5}{8}$ " x $54\frac{3}{8}$ " x 4"
(397 x 1381 x 102 mm)



204692A ROVAL™ AUTOMATIC RECESSED ROLL PAPER TOWEL DISPENSER AND WASTE RECEPTACLE

Fabricated of 18 gauge stainless steel. 17.8 gal. (67.2 L) removable waste receptacle. Towel length is determined by owner by setting length, delay, and paper saver switches.

**SUFFIX OPTIONS FOR POWER/MOUNTING:
[A, A-6, A-9, AC, AC-6, AC-9]**

- A:** Powered by 4 D-size batteries (not included).
- AC:** Powered by AC plug-in adapter.
- 6:** Semi-recessed with 6" stainless steel collar.
- 9:** Surface mounted with 9" stainless steel collar.

Unit Size:
17³/₈" x 56¹/₁₆" x 11¹¹/₁₆"
(441 x 1424 x 297 mm)

Wall Opening:
15¹³/₁₆" x 54¹¹/₁₆" x 10"
(402 x 1389 x 254 mm)



2046921A ROVAL™ AUTOMATIC RECESSED ROLL PAPER TOWEL DISPENSER AND WASTE RECEPTACLE FOR ADA COMPLIANCE

Smaller waste receptacle, 13.5 gal. (51.1 L), allows unit to be ADA compliant. Cabinet and frame fabricated of 22 gauge stainless steel. Internal shelf is ideal for paper towel storage. Towel length is determined by owner by setting length, delay, and paper saver switches.

**SUFFIX OPTIONS FOR POWER/MOUNTING:
[A, A-6, A-9, AC, AC-6, AC-9]**

- A:** Powered by 4 D-size batteries (not included).
- AC:** Powered by AC plug-in adapter.
- 6:** Semi-recessed with 6" stainless steel collar.
- 9:** Surface mounted with 9" stainless steel collar.

Unit Size:
17³/₈" x 56¹/₁₆" x 11¹¹/₁₆"
(441 x 1424 x 296 mm)

Wall Opening:
15¹³/₁₆" x 54¹¹/₁₆" x 10"
(402 x 1389 x 254 mm)



20826 ROVAL™ SURFACE MOUNTED WASTE RECEPTACLE

Receptacle front and sides fabricated of 20 gauge stainless steel with satin finish. 12.8 gal. (48.4 L) waste capacity.

MODEL OPTION:

20826-T Closed top, spring-loaded door. Capacity 12.8 gal. (48.4 L).

Overall Dimensions:

15¹/₈" x 23" x 8¹/₂"
(384 x 584 x 216 mm)



20458 ROVAL™ SEMI-RECESSED REMOVABLE WASTE RECEPTACLE

Easy maintenance—removable 20 gauge stainless steel waste receptacle locks into cabinet with a tumbler lock for security. Capacity 11.2 gal. (42.6 L). Frame and cabinet fabricated of 22 gauge stainless steel with satin finish.

Unit Size:

17³/₈" x 27³/₄" x 8¹⁵/₁₆"
(441 x 705 x 227 mm)

Wall Opening:

15³/₄" x 26" x 3¹⁵/₁₆"
(400 x 660 x 100 mm)



20852 ROVAL™ SURFACE MOUNTED SANITARY WASTE RECEPTACLE

Lid is drawn one-piece construction and is secured to the cabinet with a heavy-duty ⁵/₆₄" multi-staked concealed piano hinge. Cabinet top and body fabricated of 22 gauge stainless steel. 1 gal. (3.7 L) waste capacity.

Overall Dimensions:

7¹/₄" x 10" x 3¹/₂"
(185 x 253 x 89 mm)



20470 ROVAL™ RECESSED SANITARY NAPKIN DISPOSAL

Heavy-duty ⁵/₆₄" staked piano hinge adds to the robust construction. Drawn one-piece seamless door of 22 gauge stainless steel with a satin finish. 1.0 gal. (3.7 L) waste capacity.

Unit Size:

12¹³/₁₆" x 11" x 5⁷/₁₆"
(325 x 280 x 138 mm)

Wall Opening:

15³/₄" x 26" x 3¹⁵/₁₆"
(400 x 660 x 100 mm)



204684 ROVAL™ RECESSED DUAL SANITARY NAPKIN AND TAMPON DISPENSER

Dispenses 31 napkins and 22 tampons. Door has 18 gauge satin finish stainless steel, with 2 flush tumbler locks. Universal coin mechanism allows for 25¢, 50¢, and free (no coin) operation. Choose appropriate suffix (-25, -50 or -F).

MODEL OPTION:

204684-9 Surface mounted with 9" stainless steel collar.

Unit Size:

17⁵/₁₆" x 27³/₄" x 5⁵/₈"
(440 x 705 x 143 mm)

Wall Opening:

15³/₄" x 26¹/₈" x 4"
(397 x 664 x 102 mm)



20452 ROVAL™ RECESSED PAPER TOWEL DISPENSER

Dispenses 600 C-fold or 800 multi-fold paper towels. Door fabricated of 18 gauge drawn one-piece stainless steel with satin finish. Door secured with 3/16" staked piano hinge and flush tumbler lock.

Overall Dimensions:
12 3/4" x 28" x 5 7/16"
(324 x 711 x 137 mm)



204523A ROVAL™ AUTOMATIC RECESSED ROLL PAPER TOWEL DISPENSER

Fabricated of 22 gauge stainless steel with satin finish. Towel length is determined by owner by setting length, delay and paper saver switches.

SUFFIX OPTIONS FOR POWER/MOUNTING:
[A, A-6, A-9, AC, AC-6, AC-9]

A: Powered by 4 D-size batteries (not included).
AC: Powered by AC plug-in adapter.
-6: Semi-recessed with 6" stainless steel collar.
-9: Surface mounted with 9" stainless steel collar.

Unit Size:
17 3/8" x 27 3/4" x 11 11/16"
(441 x 705 x 297 mm)

Wall Opening:
15 3/4" x 26" x 10"
(400 x 660 x 254 mm)



20210 ROVAL™ SURFACE MOUNTED PAPER TOWEL DISPENSER

Dispenses 400 C-fold or 525 multi-fold paper towels. Fabricated of 22 gauge stainless steel with satin finish. Fitted with tumbler lock and heavy-duty stainless steel staked piano hinge.

Overall Dimensions:
11 1/16" x 13 7/16" x 4 7/8"
(281 x 345 x 124 mm)



20030 ROVAL™ SURFACE MOUNTED TWIN HIDE-A-ROLL TOILET TISSUE DISPENSER

Holds 2 rolls up to 5.25" (133 mm) diameter (double roll capacity 3600 sheets); top roll automatically drops in place when bottom roll is used up. Fabricated of 22 gauge satin finish stainless steel. Theft-resistant spindles with integral plated steel endpins.

MODEL OPTION:
20031 With flange for semi-recessed mounting.

Overall Dimensions:
6 1/16" x 12 1/8" x 6 1/2"
(154 x 308 x 165 mm)



20477-SM ROVAL™ SURFACE MOUNTED SEAT COVER DISPENSER

Dispenses 250 seat covers. Fabricated of 20 gauge stainless steel with a satin finish.

Overall Dimensions:
15 3/4" x 11" x 2 3/8"
(400 x 280 x 60 mm)



9013 RECESSED STAINLESS STEEL BABY CHANGING STATION

ADA-compliant unit features welded stainless steel for long and reliable use. Exposed surfaces are satin finish. Easy one-handed operation is assisted by a pull handle and concealed spring. The changing surface is fungus-, bacteria-, and high-impact-resistant plastic for easy cleaning. Its two part adjustable safety strap and 400 lb. (181 kg) load capacity assure child protection.

MODEL OPTION:

9013-9 Surface mounted with 9" stainless steel collar.

Overall Dimensions:

Open:	Closed:
37" x 25½" x 17¾"	37" x 25½" x ¾"
(940 x 648 x 451 mm)	(940 x 648 x 10 mm)

Wall Opening:

34¼" x 22¾" x 3¾"
(870 x 578 x 95 mm)



9343 HORIZONTAL SURFACE MOUNTED SOAP DISPENSER

All-purpose valve dispenses liquid soaps with a capacity of 48 fl. oz. (1.4 L). It has a tamper-resistant refill window with concealed fastening and vandal-resistant hinged filler-top.

Overall Dimensions:

7¼" x 6½" x 3¼"
(184 x 165 x 94 mm)

Spout Projection: ⅝" (24 mm)



20365 ROVAL™ AUTOMATIC SURFACE MOUNTED FOAM SOAP DISPENSER

Hands-free foam soap dispenser powered by 4 AA-size batteries (not included). A foam drop is dispensed out of the nozzle on unit bottom each time its sensor is activated. Translucent removable internal tank for easy-to-view level. Capacity: 34 oz. (1 L).

Overall Dimensions:

5½" x 10¾" x 4"
(140 x 273 x 102 mm)



20364 ROVAL™ AUTOMATIC SURFACE MOUNTED LIQUID SOAP DISPENSER

Hands-free liquid soap dispenser powered by 6 AA-size batteries (not included). Dispensing cycles adjustable with tamper-proof magnetic key. Seamless drawn stainless steel cover. Translucent removable internal tank for easy-to-view level. LED indicates adjustment and operation. Capacity: 34 oz. (1 L).

Overall Dimensions:

5½" x 10⅞" x 4"
(140 x 276 x 102 mm)



20363 ROVAL™ SURFACE MOUNTED LIQUID SOAP DISPENSER

Push button operation, valve needs no more than 5 lbs. of pressure to actuate. Dispenses liquid soap Capacity: 57 oz. (1.7 L).

Overall Dimensions:

5½" x 10⅞" x 4"
(139 x 274 x 102 mm)

Spout Projection: ⅝" (24 mm)



20199 ROVAL™ SEMI-RECESSED HIGH-SPEED HAND DRYER

This high-performing hand dryer, with a drying time of 10-15 seconds, has a cover made of 18 gauge stainless steel and uniquely complements the Roval™ Collection with its bowed face and gently radiused edges. 5-year warranty. Optional voltages available.

Unit Size: 11" x 15 1/2" x 5 23/32"
(279 x 394 x 145 mm)

Wall Opening: 10 1/2" x 14 5/8" x 3 1/4"
(267 x 371 x 83 mm)

Decibel Level: 69 dB-A @ 2M



White
(also available)

20200 TRI-Umph™ HIGH-SPEED HAND DRYER

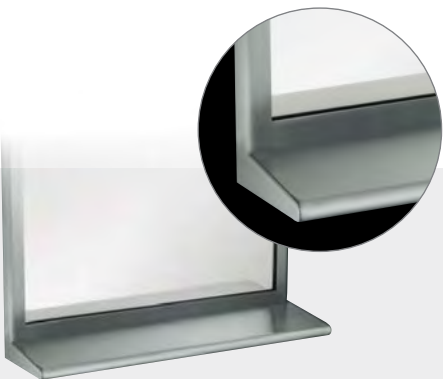
Satin look cover: ABS plastic with silver ions. Ergonomic—no need to bend over or bend knees. Air blows down and back from vents above. No water splash-back. Ultra hygienic—over 99% of airborne bacteria is eliminated with the removable Triple HEPA Filter System. 5-year warranty. Optional voltages available.

MODEL OPTION:
20201 White finish.



Overall Dimensions:
12 11/16" x 23 1/8" x 7 3/4"
(322 x 588 x 196 mm)

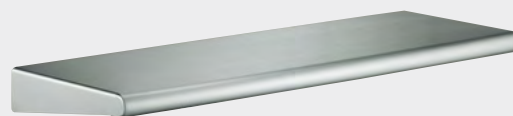
Decibel Level: 62.9-67.2 dB-A @ 2M



20655 ROVAL™ STAINLESS STEEL MIRROR WITH INTEGRAL SHELF

The gently radiused edges provide added strength and complement the curves of the ASI Roval™ Collection. Mirror frame and 6" wide curved edge shelf are fabricated of 18 gauge stainless steel with satin finish. Mirror frame has polished seamless mitered corners and 0.25" (6.4 mm) thick plate glass mirror. Choice of sizes.

MODEL OPTION:
20650 Mirror without shelf.



20692 ROVAL™ SURFACE MOUNTED SHELF

Fabricated of 18 gauge stainless steel, the 6" wide shelf has a 3/4" (19 mm) gently radiused edge that uniquely complements the curves of the ASI Roval™ Collection. Choice of sizes.

Overall Dimensions:
6" x 12"-72"
(152 x 305-1829 mm)

SHOWN: 9469 PAPER TOWEL
DISPENSER AND
WASTE RECEPTACLE

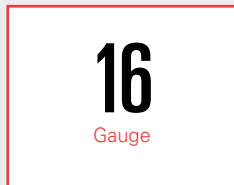


Profile™ Collection

Manufactured with highly durable stainless steel doors and cabinets, this visually appealing collection with rounded edges stands the test of time.

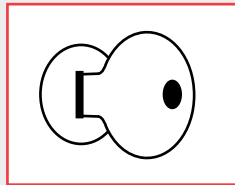
Its concealed hinges ensure smooth and long-lived operation, and its locks offer strong security.

WHAT MAKES THE PROFILE™ COLLECTION UNIQUE?



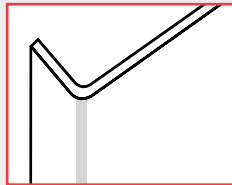
HEAVY-DUTY

Our 16 gauge stainless steel doors are attached to 20 gauge stainless steel cabinets with concealed $\frac{3}{16}$ " (5 mm) diameter piano hinges to handle heavy use.



RIMLESS TUMBLER LOCKS

Our rimless flush tumbler locks that are keyed alike provide convenience and security with an elegant look.



ROUNDED CORNERS

All doors have vertical edges rounded to a $\frac{3}{4}$ " (19 mm) radius with welded corners for strength and to ensure no sharp edges for safety.



EASY LIFT OUT RECEPTACLE

Fully removable stainless steel waste cans allow contents to be easily discarded for efficient ongoing maintenance and cleanliness.

PROFILE™ COLLECTION



MULTI-PURPOSE CABINETS



PAPER TOWEL DISPENSERS



WASTE RECEPTACLES



9469 PROFILE™ RECESSED PAPER TOWEL DISPENSER AND WASTE RECEPTACLE

Dispenses 600 C-fold or 800 multi-fold paper towels. Door and 13 gal. (49 L) waste receptacle fabricated of 16 gauge stainless steel.

Unit Size:

17¹/₄" x 56" x 5³/₁₆"
(438 x 1422 x 132 mm)

Wall Opening:

15³/₄" x 54¹/₂" x 4"
(400 x 1384 x 102 mm)



9462 PROFILE™ RECESSED PAPER TOWEL DISPENSER AND WASTE RECEPTACLE

Dispenses 600 C-fold, 800 multi-fold, or 1100 single-fold paper towels. 16 gauge stainless steel door. 9 gal. (34 L) stainless steel waste receptacle.

Unit Size:

17¹/₄" x 54" x 6¹⁵/₁₆"
(438 x 1372 x 176 mm)

Wall Opening:

15³/₄" x 52¹/₂" x 6"
(400 x 1334 x 152 mm)



9467 PROFILE™ RECESSED PAPER TOWEL DISPENSER AND WASTE RECEPTACLE

Dispenses 600 C-fold or 800 multi-fold paper towels. 4.5 gal. (17 L) stainless steel waste receptacle. 16 gauge stainless steel door.

MODEL OPTIONS:

94676 dispenses 600 C-fold, 800 multi-fold, or 1100 single-fold towels and has push door. 8 gal. (30 L) waste capacity.

9467

Unit Size:
13" x 55" x 5³/₁₆"
(330 x 1397 x 132 mm)

Wall Opening:
11¹/₂" x 53¹/₂" x 4¹/₄"
(292 x 1359 x 108 mm)

94676

Unit Size:
13" x 55" x 7³/₁₆"
(330 x 1397 x 183 mm)

Wall Opening:
11¹/₂" x 53¹/₂" x 6¹/₄"
(292 x 1359 x 159 mm)



94696A PROFILE™ AUTOMATIC RECESSED ROLL PAPER TOWEL DISPENSER AND WASTE RECEPTACLE

Proximity sensing no-touch unit dispenses a pre-set length per cycle from 8" or 9" (205 or 230 mm) wide, 800 ft. (244 m) long rolls. 16 gauge stainless steel door. 10 gal. (37.8 L) stainless steel waste receptacle.

SUFFIX OPTIONS FOR POWER/MOUNTING:

[A, A-6, A-9, AC, AC-6, AC-9]

A: Powered by 4 D-size batteries (not included).

AC: Powered by AC plug-in adapter.

-6: Semi-recessed with 6" stainless steel collar.

-9: Surface mounted with 9" stainless steel collar.

94696: Mechanical lever dispenser.

Unit Size:
16¹/₁₆" x 41¹/₄" x 10¹¹/₁₆"
(408 x 1048 x 272 mm)

Wall Opening:
14⁵/₈" x 39³/₄" x 10"
(371 x 1010 x 254 mm)



94623 PROFILE™ RECESSED PAPER TOWEL DISPENSER AND WASTE RECEPTACLE

Dispenses 350 C-fold or 475 multi-fold paper towels and has a built-in 2 gal. (7.6 L) stainless steel waste receptacle. 16 gauge stainless steel door.

Unit Size: 14¹/₄" x 28" x 4¹⁵/₁₆"
(362 x 711 x 125 mm)

Wall Opening: 12³/₄" x 26¹/₂" x 4¹/₄"
(324 x 673 x 108 mm)



9452 PROFILE™ RECESSED PAPER TOWEL DISPENSER

Dispenses 600 C-fold or 800 multi-fold paper towels. 16 gauge stainless steel door.

Unit Size: 14¹/₄" x 28" x 4¹⁵/₁₆"
(362 x 711 x 125 mm)

Wall Opening: 12³/₄" x 26¹/₂" x 4¹/₄"
(324 x 673 x 108 mm)



9457 PROFILE™ RECESSED PAPER TOWEL DISPENSER

Dispenses 350 C-fold or 475 multi-fold paper towels. 16 gauge stainless steel door.

Unit Size: 12³/₄" x 17¹/₄" x 4¹⁵/₁₆"
(324 x 438 x 125 mm)

Wall Opening: 11¹/₄" x 15³/₄" x 4¹/₄"
(286 x 400 x 108 mm)



9459 PROFILE™ RECESSED WASTE RECEPTACLE

Stainless steel waste receptacle holds 4 gal. (15 L) of waste and has a self-closing panel that covers its opening. 16 gauge stainless steel door.

Unit Size: 14¹/₄" x 28" x 4¹⁵/₁₆"
(362 x 711 x 125 mm)

Wall Opening: 12³/₄" x 26¹/₂" x 4¹/₄"
(324 x 673 x 108 mm)



9474 PROFILE™ RECESSED WASTE RECEPTACLE

Stainless steel waste receptacle holds 12 gal. (45.4 L) of washroom waste materials. 16 gauge stainless steel door.

Unit Size: 17¹/₄" x 40" x 7³/₁₆"
(438 x 1016 x 183 mm)

Wall Opening: 15³/₄" x 38¹/₂" x 6¹/₄"
(400 x 978 x 159 mm)



9468 PROFILE™ RECESSED DUAL NAPKIN/TAMPON VENDOR

Dispenses 30 feminine napkins and 27 tampons using 25¢, 50¢, or free operation. Its door has 2 tumbler locks. Its inside coin box has a separately keyed lock. 16 gauge stainless steel door.

MODEL OPTION:
94684 designed for 4" (102 mm) wall opening; dispenses 15 napkins and 23 tampons.

Unit Size: 17¹/₄" x 27¹/₄" x 6¹⁵/₁₆"
(438 x 692 x 176 mm)

Wall Opening: 16" x 26" x 6¹/₄"
(406 x 660 x 159 mm)



9471 PROFILE™ RECESSED SANITARY NAPKIN DISPOSAL

Stainless steel unit features a self-closing push door that covers the disposal opening along with a removable 1.8 gal. (7 L) waste receptacle and 16 gauge stainless steel door.

Unit Size: 10⁵/₈" x 19⁵/₈" x 4¹⁵/₁₆" (270 x 498 x 125 mm)
Wall Opening: 9¹/₈" x 18¹/₈" x 4¹/₄" (232 x 460 x 108 mm)



9326 SURFACE MOUNTED LIQUID SOAP DISPENSER

Dispenser has a covered stainless steel soap tank attached to the door, which hinges out for easy filling and cleaning. Its all-purpose valve dispenses liquid soap, with a capacity of 52 fl. oz. (1.5 L).

Unit Size: 10¹/₄" x 6" x 7³/₁₆" (260 x 152 x 183 mm)
Wall Opening: 9" x 4⁷/₈" x 4¹/₄" (229 x 124 x 108 mm)
 Spout Projection: 2¹/₄" (57 mm)



9343 HORIZONTAL SURFACE MOUNTED SOAP DISPENSER

All-purpose valve dispenses liquid soap, with a capacity of 48 fl. oz. (1.4 L). It has a tamper-resistant refill window with concealed fastening and vandal-resistant hinged filler-top.

Overall Dimensions: 7¹/₄" x 6¹/₂" x 3¹¹/₁₆" (184 x 165 x 94 mm)
 Spout Projection: 1⁵/₁₆" (24 mm)



9477 PROFILE™ SURFACE MOUNTED TOILET SEAT COVER DISPENSER

Dispenses 500 seat covers. Fabricated of 16 gauge stainless steel.

MODEL OPTION:
9477-SM Surface mounted. Dispenses 250 seat covers.

Unit Size: 17¹/₄" x 12³/₄" x 3⁵/₁₆" (438 x 324 x 73 mm)
Wall Opening: 15³/₄" x 11¹/₄" x 2⁵/₈" (400 x 285 x 67 mm)



9030 SURFACE MOUNTED DUAL ROLL TOILET TISSUE DISPENSER

Stainless steel cabinet with mechanism for theft-resistant spindles holds 2 rolls up to 5¹/₄" (135 mm) diameter (1800 sheets); the top roll automatically drops in place when the bottom roll is used up.

Overall Dimensions: 6" x 12" x 6¹/₄" (152 x 305 x 159 mm)



9031 RECESSED DUAL ROLL TOILET TISSUE DISPENSER

Stainless steel cabinet with mechanism for theft-resistant spindles holds 2 rolls up to 5¹/₄" (135 mm) diameter (1800 sheets); the top roll automatically drops in place when the bottom roll is used up.

Unit Size: 8" x 14" x 6¹/₄" (203 x 356 x 159 mm)
Wall Opening: 6¹/₄" x 12¹/₄" x 3³/₈" (159 x 311 x 86 mm) with flange for recessing

SHOWN: 6467 PAPER TOWEL
DISPENSER AND
WASTE RECEPTACLE

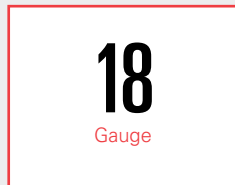


Simplicity™ Collection

Combining seamless construction and crisp design lines, this elegant collection provides strength, comfort, beauty, and durability.

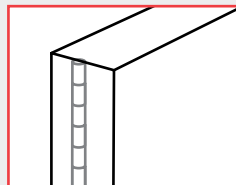
All units have keyed-alike tumbler locks for ease in maintenance. Automatic dispensers feature a proximity sensor activated dispensing mechanism.

WHAT MAKES THE SIMPLICITY™ COLLECTION UNIQUE?



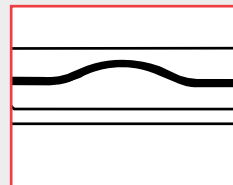
STAINLESS STEEL CONSTRUCTION

Constructed with 18 gauge stainless steel doors and 20 gauge cabinets, which are attached with concealed 3/16" (5 mm) diameter piano hinges for durability.



SEAMLESS ONE-PIECE COVER-ALL DOOR

The door is designed for a sleek and streamlined appearance, making it easy to maintain even with heavy use.



SAFE EASY DISPENSING

Towel dispensers have hemmed opening for safe, easy dispensing, minimizing waste and ensuring hygienic use.



EASY LIFT OUT RECEPTACLE

Fully removable stainless steel waste cans allow contents to be easily discarded for efficient ongoing maintenance and cleanliness.

SIMPLICITY™ COLLECTION



PAPER TOWEL DISPENSERS



FEMININE HYGIENE VENDORS



SOAP DISPENSERS



6462 SIMPLICITY™ RECESSED PAPER TOWEL DISPENSER AND WASTE RECEPTACLE

Dispenses 800 multi-fold or 600 C-fold towels, standard. Provided adapter allows the flexibility to change the capacity to up to 1,100 single-fold paper towels. 9 gal. (34 L) stainless steel waste receptacle. 18 gauge stainless steel door.

MODEL OPTIONS:

6462-2 Semi-recessed with 2" stainless steel collar.

6462-9 Surface mounted with 9" stainless steel collar.

Unit Size:

17 1/4" x 54" x 6 1/2"

(438 x 1372 x 165 mm)

Wall Opening:

15 3/4" x 52 1/2" x 6"

(400 x 1335 x 152 mm)



6467 SIMPLICITY™ PAPER TOWEL DISPENSER AND WASTE RECEPTACLE

Dispenses 600 C-fold or 800 multi-fold paper towels. 4.24 gal. (16 L) stainless steel waste receptacle. 18 gauge stainless steel door.

MODEL OPTION:

6467-9 Surface mounted with 9" stainless steel collar.

Unit Size:

13" x 55" x 4 3/4"

(330 x 1397 x 121 mm)

Wall Opening:

11 1/2" x 53 1/2" x 4"

(292 x 1359 x 102 mm)



64676 SIMPLICITY™ PAPER TOWEL DISPENSER AND WASTE RECEPTACLE

Dispenses 600 C-Fold, 800 multi-fold, or 1100 single-fold towels. 7 gal. (26.5 L) stainless steel waste receptacle. 18 gauge stainless steel door.

MODEL OPTIONS:

64676-2 Semi-recessed with 2" stainless steel collar.

64676-9 Surface mounted with 9" stainless steel collar.

Unit Size:

13" x 55" x 6 1/2"

(330 x 1397 x 165 mm)

Wall Opening:

11 1/2" x 53 1/2" x 6"

(292 x 1359 x 152 mm)



NEW



646924A SIMPLICITY™ AUTOMATIC RECESSED ROLL PAPER TOWEL DISPENSER AND WASTE RECEPTACLE

Proximity sensing no-touch recessed unit dispenses a pre-set length per cycle from 8" or 9" (205 or 230 mm) wide, 800 ft. (244 mm) long rolls. 12 gal. (45.4 L) waste receptacle. Fabricated of 22 gauge stainless steel, 18 gauge door.

**SUFFIX OPTIONS FOR POWER/MOUNTING:
[A, A-9, AC, AC-9]**

- A:** Powered by 4 D-size batteries (not included).
- AC:** Powered by AC plug-in adapter.
- 9:** Surface mounted with 9" stainless steel collar.

Unit Size:
17¹/₄" x 56" x 10¹/₄"
(438 x 1422 x 260 mm)

Wall Opening:
15³/₄" x 54¹/₂" x 4"
(400 x 1384 x 102 mm)



64672-1 SIMPLICITY™ RECESSED 3-IN-1 PAPER TOWEL DISPENSER, HIGH SPEED HAND DRYER AND WASTE RECEPTACLE

Paper towel dispenser with waste receptacle and < 15 second automatic hand dryer. Dispenses 500 multi-fold or 400 C-fold paper towels, and has a waste capacity of 6.8 gal. (26 L). 18 gauge stainless steel door. Dryer has 5-year warranty. 110-120V. Optional voltages available.

MODEL OPTIONS:

- 64672-2** Dryer Voltage is 208-240V Dryer.
- 64672** Cabinet only – no hand dryer included.

Unit Size:
15³/₈" x 55³/₈" x 7¹/₂"
(391 x 1407 x 191 mm)

Wall Opening:
14³/₃₂" x 54³/₈" x 7¹/₄"
(358 x 1381 x 184 mm)

Decibel Level: 68.9-74.3 dB-A @ 2M





0198-MH SAFE-DRI™ MENTAL HEALTH APPROVED RECESSED HIGH-SPEED HAND DRYER

Anti-ligature dryer designed for Behavioral Health environments—angled top, welded corners and single tube exhaust prevent looping, tying off, wedging, and prying. Tamper-resistant 18 gauge stainless steel cover, and flush pin-hex security screws. Optional voltages available.

Unit Size: 12⁵/₈" x 15³/₄" x 5¹/₁₆"
(320 x 400 x 140 mm)

Wall Opening: 11⁷/₈" x 14³/₄" x 5¹/₈"
(303 x 376 x 130 mm)

Decibel Level:
66 dB-A @ 2M



0135 TURBO-TUFF FULLY RECESSED HIGH-SPEED HAND DRYER

Fast drying, <15 seconds, operates automatically using infrared sensor with auto-resetting thermostat. Owner-adjustable air speed & temperature and on/off heating options. Dryer automatically shuts off after time-out when user removes hands from sensor zone. Optional voltages available.

Unit Size: 12⁹/₃₂" x 15³/₄" x 4¹/₁₆"
(320 x 400 x 103 mm)

Wall Opening: 12⁵/₁₆" x 15³/₁₆" x 3⁷/₈"
(313 x 386 x 98 mm)

Decibel Level: 68.9-74.3 dB-A @ 2M



64623 SIMPLICITY™ RECESSED PAPER TOWEL DISPENSER AND WASTE RECEPTACLE

Dispenses 350 C-fold or 475 multi-fold paper towels. 2.2 gal. (8.4 L) stainless steel waste receptacle. 18 gauge stainless steel door.

MODEL OPTION:
64623-9 Surface mounted with 9" stainless steel collar.

Unit Size: 14¹/₄" x 28" x 4³/₄"
(362 x 711 x 121 mm)

Wall Opening: 12³/₄" x 26¹/₂" x 4¹/₄"
(324 x 673 x 108 mm)



645210A SIMPLICITY™ AUTOMATIC RECESSED ROLL PAPER TOWEL DISPENSER

Proximity sensing no-touch recessed unit dispenses an owner-adjustable length per cycle from 8" (205 mm) wide, 800 ft. (244 m) long rolls. Fabricated of 20 gauge stainless steel with satin finish.

SUFFIX OPTIONS FOR POWER/MOUNTING: [A, A-6, A-9, AC, AC-6, AC-9]

- A:** Powered by 4 D-size batteries (not included).
- AC:** Powered by AC plug-in adapter.
- 6:** Semi-recessed with 6" stainless steel collar.
- 9:** Surface mounted with 9" stainless steel collar.
- 645210:** Mechanical lever dispenser.

Unit Size: 16³/₁₆" x 28" x 9"
(408 x 711 x 229 mm)

Wall Opening: 15³/₁₆" x 26¹/₂" x 10¹/₄"
(400 x 673 x 260 mm)



64696 SIMPLICITY™ RECESSED ROLL PAPER TOWEL DISPENSER AND WASTE RECEPTACLE

Mechanically dispenses 8" or 9" (205 or 230 mm) wide, 800 ft. (244 m) long rolls in pre-set lengths per stroke. 9.2 gal. (34.8 L) stainless steel waste receptacle. 18 gauge stainless steel door.

- MODEL OPTIONS:**
- 64696-6** Semi-recessed with 6" stainless steel collar.
 - 64696-9** Surface mounted with 9" stainless steel collar.

Unit Size: 16¹/₁₆" x 41¹/₄" x 9⁵/₈"
(408 x 1048 x 245 mm)

Wall Opening: 14⁵/₈" x 39³/₄" x 9¹/₄"
(371 x 1010 x 235 mm)



64696A SIMPLICITY™ AUTOMATIC RECESSED ROLL PAPER TOWEL DISPENSER AND WASTE RECEPTACLE

Proximity sensing no-touch unit dispenses a pre-set length per cycle from 8" or 9" (205 or 230 mm) wide, 800 ft. (244 m) long rolls. 9.9 gal. (37.3 L) stainless steel waste receptacle. 18 gauge stainless steel door.

SUFFIX OPTIONS FOR POWER/MOUNTING: [A, A-6, A-9, AC, AC-6, AC-9]

- A:** Powered by 4 D-size batteries (not included).
- AC:** Powered by AC plug-in adapter.
- 6:** Semi-recessed with 6" stainless steel collar.
- 9:** Surface mounted with 9" stainless steel collar.

Unit Size: 16¹/₁₆" x 41¹/₄" x 10¹/₄"
(408 x 1048 x 261 mm)

Wall Opening: 14⁵/₈" x 39³/₄" x 10"
(371 x 1010 x 254 mm)



6457 SIMPLICITY™ RECESSED PAPER TOWEL DISPENSER

Well-suited for the smaller washroom with less space and traffic, this unit dispenses 350 C-fold or 475 multi-fold paper towels. 18 gauge stainless steel door.

Unit Size:
12³/₄" x 17¹/₄" x 4¹/₂"
(324 x 438 x 114 mm)

Wall Opening:
11¹/₄" x 15³/₄" x 4¹/₄"
(286 x 400 x 108 mm)



6452 SIMPLICITY™ RECESSED PAPER TOWEL DISPENSER

Dispenses 600 C-fold or 800 multi-fold paper towels. 18 gauge stainless steel door.

MODEL OPTION:
6452-9 Surface mounted with 9" stainless steel collar.

Unit Size:
14¹/₄" x 28" x 4¹/₂"
(362 x 711 x 114 mm)

Wall Opening:
12³/₄" x 26¹/₂" x 4¹/₄"
(324 x 673 x 108 mm)



6459 SIMPLICITY™ RECESSED WASTE RECEPTACLE

Stainless steel waste receptacle holds 4 gal. (15 L) of waste and has a self-closing panel that covers its opening. 18 gauge stainless steel door.

Unit Size:
14¹/₄" x 28" x 4¹/₂"
(362 x 711 x 114 mm)

Wall Opening:
12³/₄" x 26¹/₂" x 4¹/₄"
(324 x 673 x 108 mm)



6474 SIMPLICITY™ RECESSED WASTE RECEPTACLE

Stainless steel waste receptacle holds 12 gal. (46 L) of washroom waste materials. 18 gauge stainless steel door.

MODEL OPTION:
6474-2 Semi-recessed with 2" stainless steel collar.

Unit Size:
17¹/₄" x 40" x 6³/₄"
(438 x 1016 x 171 mm)

Wall Opening:
15³/₄" x 38¹/₂" x 6¹/₄"
(400 x 978 x 159 mm)



6468 SIMPLICITY™ RECESSED DUAL NAPKIN/TAMPON VENDOR

Dispenses 30 feminine napkins and 27 tampons. Universal coin mechanism allows for 25¢, 50¢, and free (no coin) operation. Choose appropriate suffix (-25, -50, or -F). Door has 2 tumbler locks, inside coin box has a separately keyed lock.

MODEL OPTION:

64684 designed for 4" (102 mm) wall opening; dispenses 15 napkins and 23 tampons.

Unit Size:
17¹/₄" x 27¹/₄" x 6¹/₂"
(438 x 692 x 165 mm)

Wall Opening:
16" x 26" x 6¹/₄"
(406 x 660 x 159 mm)



68523A-4 SIMPLICITY™ AUTOMATIC SEMI-RECESSED ROLL PAPER TOWEL DISPENSER

Proximity sensing no-touch unit dispenses a pre-set length per cycle from 8" standard towel roll up to 800 ft. (244m) long and has stub roll capability for continuous dispensing.

MODEL OPTION:

68523A battery operated, surface mounted.
68523AC roll towel dispenser, 110-240V/AC, surface mounted.
68523AC-4 roll towel dispenser, 110-240V/AC, semi-recessed.

Unit Size:
17⁵/₁₆" x 20³/₈" x 9¹/₂"
(440 x 518 x 241 mm)

Wall Opening:
15³/₈" x 19" x 4"
(391 x 483 x 102 mm)



6471 SIMPLICITY™ RECESSED SANITARY NAPKIN DISPOSAL

Features a self-closing stainless steel push door that covers the disposal opening along with a removable 1.9 gal. (7.2 L) stainless steel waste receptacle. 18 gauge stainless steel door.

Unit Size:
10⁵/₈" x 19⁵/₈" x 4¹/₂"
(270 x 498 x 114 mm)

Wall Opening:
9¹/₈" x 18¹/₈" x 4"
(232 x 460 x 102 mm)



6477 SIMPLICITY™ RECESSED TOILET SEAT COVER DISPENSER

Dispenses 500 seat covers. 18 gauge stainless steel door.

Unit Size:
17¹/₄" x 12³/₄" x 2⁷/₈"
(438 x 324 x 73 mm)

Wall Opening:
15³/₄" x 11¹/₂" x 2¹/₂"
(400 x 292 x 64 mm)



6326 SIMPLICITY™ RECESSED LIQUID SOAP DISPENSER

Dispenser has a covered stainless steel soap tank attached to the door, which hinges out for easy filling and cleaning. Its all-purpose valve dispenses liquid soap, with a capacity of 47 fl. oz. (1.4 L).

Unit Size:
10¹/₄" x 6" x 4¹/₈"
(260 x 152 x 105 mm)

Wall Opening:
9" x 4⁷/₈" x 4"
(229 x 124 x 102 mm)

Spout Projection:
2¹/₂" (64 mm)

SHOWN: 0469 PAPER TOWEL
DISPENSER AND
WASTE RECEPTACLE

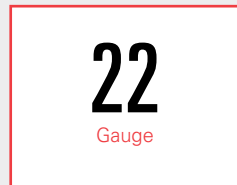


Traditional™ Collection

This time-honored collection provides exceptional value, offering a broad array of items for well-equipped washrooms. Double-pan doors incorporate a “no-flex” structural fiberboard core. Combining seamless construction and crisp design lines, this

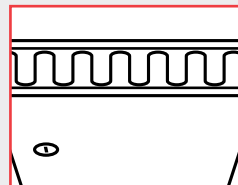
elegant collection provides strength, comfort, beauty, and durability. All units have keyed-alike tumbler locks for ease in maintenance. Automatic dispensers feature a proximity sensor activated dispensing mechanism.

WHAT MAKES THE TRADITIONAL™ COLLECTION UNIQUE?



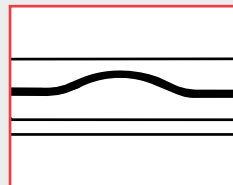
STAINLESS STEEL CONSTRUCTION

Fabricated with 22 gauge stainless steel with face trim, the recessed cabinet features one-piece construction with no miters or welding for durability.



DOUBLE-PAN DOORS

The double-pan doors incorporate a “no-flex” structural fiberboard core, adding strength and endurance for long-term use.



SAFE EASY DISPENSING

Towel dispensers have hemmed opening for safe, easy dispensing, minimizing waste, and ensuring hygienic use.



EASY LIFT OUT RECEPTACLE

Fully removable stainless steel waste cans allow contents to be easily discarded for efficient ongoing maintenance and cleanliness.

TRADITIONAL™ COLLECTION



MULTI-PURPOSE CABINETS



PAPER TOWEL DISPENSERS



WASTE RECEPTACLES



0462-AD TRADITIONAL™ RECESSED PAPER TOWEL DISPENSER AND WASTE RECEPTACLE

Dispenses 350 C-fold or 475 multi-fold paper towels. 2 gal. (7.6 L) waste receptacle. Door and cabinet fabricated of 22 gauge stainless steel.

MODEL OPTION:

0462-AD-9 Surface mounted with 9" stainless steel collar.

Unit Size:

14¹/₄" x 28" x 4¹/₄"
(362 x 711 x 108 mm)

Wall Opening:

12³/₄" x 26¹/₂" x 4"
(324 x 673 x 102 mm)



0469 TRADITIONAL™ RECESSED PAPER TOWEL DISPENSER AND WASTE RECEPTACLE

Dispenses 600 C-fold or 800 multi-fold paper towels. 12 gal. (46 L) stainless steel waste receptacle. Fabricated of 22 gauge stainless steel.

MODEL OPTIONS:

0469-2 Semi-recessed with 2" stainless steel collar.

0469-9 Surface mounted with 9" stainless steel collar.

0469-BL 18 gal. (68 L) waste receptacle. Projects 8" (205 mm) from wall.

Unit Size:

17¹/₄" x 56" x 4¹/₄"
(438 x 1422 x 108 mm)

Wall Opening:

15³/₄" x 54¹/₂" x 4"
(400 x 1384 x 102 mm)



04697 TRADITIONAL™ RECESSED PAPER TOWEL DISPENSER AND WASTE RECEPTACLE

Dispenses 600 C-fold, 800 multi-fold, or 1100 single-fold paper towels. 12 gal. (46 L) stainless steel waste receptacle. Fabricated of 22 gauge stainless steel.

MODEL OPTIONS:

- 04697-4** Semi-recessed with 4" stainless steel collar.
- 04697-9** Surface mounted with 9" stainless steel collar.
- 04697-BL** 18 gal. (68 L) waste receptacle, projects 4" (102 mm) from wall.

Unit Size:
17¹/₄" x 56" x 7¹/₄"
(438 x 1422 x 184 mm)

Wall Opening:
15³/₄" x 54¹/₂" x 7¹/₄"
(400 x 1384 x 184 mm)

04692A TRADITIONAL™ AUTOMATIC RECESSED ROLL PAPER TOWEL DISPENSER AND WASTE RECEPTACLE

Proximity sensing no-touch unit dispenses a pre-set length per cycle from 8" or 9" (205 or 230 mm) wide, 800 ft. (244 m) long rolls. Fabricated of 22 gauge stainless steel, 18 gauge door.

SUFFIX OPTIONS FOR POWER/MOUNTING:
[A, A-6, A-9, AC, AC-6, AC-9]

- A:** Powered by 4 D-size batteries (not included).
- AC:** Powered by AC plug-in adapter.
- 6:** Semi-recessed with 6" stainless steel collar.
- 9:** Surface mounted with 9" stainless steel collar.
- 04692:** Mechanical lever dispenser.

Unit Size:
17¹/₄" x 56" x 10¹/₄"
(438 x 1422 x 260 mm)

Wall Opening:
15³/₄" x 54¹/₂" x 10"
(400 x 1384 x 254 mm)



0467 TRADITIONAL™ RECESSED PAPER TOWEL DISPENSER AND WASTE RECEPTACLE

Dispenses 600 C-fold, 800 multi-fold, or 1100 single-fold paper towels. 7 gal. (26 L) stainless steel waste receptacle. Fabricated of 22 gauge stainless steel.

MODEL OPTIONS:

0467-2 Semi-recessed with 2" stainless steel collar.
0467-9 Surface mounted with 9" stainless steel collar.

Unit Size:

13" x 55" x 6 1/2"
 (330 x 1397 x 165 mm)

Wall Opening:

11 1/2" x 53 1/2" x 6 1/4"
 (292 x 1359 x 159 mm)



046926 TRADITIONAL™ SEMI-RECESSED ROLL PAPER TOWEL DISPENSER AND WASTE RECEPTACLE

Dispenses single full width cut towel 12" (305 mm) long from pull-towel autocut dispenser. With manual override feed wheel on the side of the cabinet. 13.5 gal. (52 L) waste receptacle. Door and back fabricated of 18 gauge stainless steel.

Unit Size:

17 1/4" x 56" x 9 1/4"
 (438 x 1422 x 235 mm)

Wall Opening:

15 3/4" x 54 1/2" x 4"
 (400 x 1384 x 102 mm)



046921A TRADITIONAL™ AUTOMATIC RECESSED ROLL PAPER TOWEL DISPENSER AND WASTE RECEPTACLE

Proximity sensing no-touch recessed unit dispenses a pre-set length per cycle from 8" or 9" (205 or 230 mm) wide, 800 ft. (244 m) long rolls. 12 gal. (45.4 L) waste receptacle. Fabricated of 22 gauge stainless steel, 18 gauge door.

**SUFFIX OPTIONS FOR POWER/MOUNTING:
[A, A-6, A-9, AC, AC-6, AC-9]**

- A:** Powered by 4 D-size batteries (not included).
- AC:** Powered by AC plug-in adapter.
- 6:** Semi-recessed with 6" stainless steel collar.
- 9:** Surface mounted with 9" stainless steel collar.
- 046921:** Mechanical lever dispenser.

Unit Size:
17¹/₄" x 56" x 10¹/₄"
(438 x 1422 x 260 mm)

Wall Opening:
15³/₄" x 54¹/₂" x 10¹/₄"
(400 x 1384 x 260 mm)



046924A TRADITIONAL™ AUTOMATIC RECESSED ROLL PAPER TOWEL DISPENSER AND WASTE RECEPTACLE

Note: This product design has been updated and is now product number 646924A (A-9, AC, AC-9) of the Simplicity™ Collection. See page 35.



0457 TRADITIONAL™ RECESSED PAPER TOWEL DISPENSER

Dispenses 350 C-fold or 500 multi-fold paper towels; well-suited for smaller washrooms with less space and traffic. Fabricated of 22 gauge stainless steel.

MODEL OPTION:

0457-9 Surface mounted with 9" stainless steel collar.

Unit Size:

12³/₄" x 17¹/₄" x 4¹/₄"
(324 x 438 x 108 mm)

Wall Opening:

11¹/₄" x 15³/₄" x 4"
(286 x 400 x 102 mm)



0452 TRADITIONAL™ RECESSED PAPER TOWEL DISPENSER

Dispenses 600 C-fold or 800 multi-fold paper towels. Fabricated of 22 gauge stainless steel.

MODEL OPTION:

0452-9 Surface mounted with 9" stainless steel collar.

Unit Size:

14¹/₄" x 28" x 4¹/₄"
(326 x 711 x 108 mm)

Wall Opening:

12³/₄" x 26¹/₂" x 4"
(324 x 673 x 102 mm)



045224A TRADITIONAL™ AUTOMATIC RECESSED ROLL PAPER TOWEL DISPENSER

Dispenses pre-set length from 8" or 9" wide rolls. Fabricated of 22 gauge stainless steel, 18 gauge door.

SUFFIX OPTIONS FOR POWER/MOUNTING:
[A, A-6, A-9, AC, AC-6, AC-9]

A: Powered by 4 D-size batteries (not included).

AC: Powered by AC plug-in adapter.

-6: Semi-recessed with 6" stainless steel collar.

-9: Surface mounted with 9" stainless steel collar.

045224: Mechanical lever dispenser.

Unit Size:

17¹/₄" x 30¹/₂" x 10¹/₄"
(438 x 775 x 260 mm)

Wall Opening:

15³/₄" x 29" x 4"
(400 x 737 x 102 mm)



045210A TRADITIONAL™ AUTOMATIC RECESSED ROLL PAPER TOWEL DISPENSER

Dispenses pre-set length from 8" or 9" wide rolls. Fabricated of 22 gauge stainless steel, 18 gauge door.

SUFFIX OPTIONS FOR POWER/MOUNTING:

[A, A-6, A-9, AC, AC-6, AC-9]

A: Powered by 4 D-size batteries (not included).

AC: Powered by AC plug-in adapter.

-6: Semi-recessed with 6" stainless steel collar.

-9: Surface mounted with 9" stainless steel collar.

Unit Size:

17¹/₄" x 28" x 10"
(438 x 711 x 254 mm)

Wall Opening:

15³/₄" x 26¹/₂" x 10¹/₄"
(400 x 673 x 260 mm)



0458 TRADITIONAL™ SEMI-RECESSED WASTE RECEPTACLE

Stainless steel waste container locks into cabinet, removable for servicing. Fabricated of 22 gauge stainless steel.

MODEL OPTION:

0458-9 Surface mounted with 9" stainless steel collar.

Unit Size:

17¹/₄" x 30¹/₂" x 8¹/₄" 15³/₄" x 29" x (variable*)
(438 x 775 x 210 mm) (400 x 737 mm)

Wall Opening:

*[0458 if 4" (102 mm) x 4" and 12 gals. (46 L); 0458-CX if 1/2" (13 mm) x 7 1/2" (191 mm) and 12 gals. (46 L); 0458-DX if 8" (203 mm) x 4" (102 mm) and 18 gals. (68 L)]



04733 TRADITIONAL™ RECESSED WASTE RECEPTACLE

Self-closing panel covers the receptacle opening, removable 3 gal. (11.4 L) stainless steel waste receptacle. Fabricated of 22 gauge stainless steel.

Unit Size:

14¹/₄" x 28" x 4¹/₂"

Wall Opening:

12³/₄" x 26¹/₂" x 4"
(362 x 711 x 114 mm) (324 x 673 x 102 mm)




0210 TRADITIONAL™ SURFACE MOUNTED PAPER TOWEL DISPENSER

Fabricated of 22 gauge stainless steel, this unit dispenses 400 C-fold or 525 multi-fold paper towels without adjustment or adapters and is fitted with tumbler lock and heavy-duty stainless steel piano hinge.

Overall Dimensions:
11" x 14⁵/₈" x 4¹/₁₆"
(279 x 371 x 103 mm)



 **0215 TRADITIONAL™ SURFACE MOUNTED PAPER TOWEL DISPENSER—PETITE**

Dispenses 200 C-fold or 275 multi-fold paper towels; well-suited for low traffic areas. Fabricated of 22 gauge stainless steel.

Overall Dimensions:
11" x 8" x 4"
(279 x 203 x 102 mm)



0439 TRADITIONAL™ RECESSED PAPER TOWEL DISPENSER

This cabinet has 2 push-up flaps for bottom-filling with towels and dispenses 600 C-fold or 800 multi-fold paper towels; designed to conceal the dispenser behind mirror or wall so only the towel tray opening is visible. Fabricated of 22 gauge stainless steel.

Note for Designers: Leave 6" min. (152 mm) clearance below towel tray opening for space to pull towels; units are installed before hanging mirror or applying finished wall.

Overall Dimensions:
11¹/₂" x 18" x 4¹/₂"
(292 x 457 x 108 mm)




8522 TRADITIONAL™ SURFACE MOUNTED ROLL PAPER TOWEL DISPENSER

Mechanical unit dispenses a pre-set length per cycle from 8" or 9" (205 or 230 mm) wide, 800 ft. (244 m) long rolls. Fabricated of 22 gauge stainless steel, 18 gauge door.

MODEL OPTIONS:
8523A Powered by 4 D-size batteries (not included).
8523AC Powered by AC plug-in adapter.

Overall Dimensions:
14" x 16" x 9¹/₂"
(356 x 406 x 241 mm)



 **8165 TRADITIONAL™ SURFACE MOUNTED ROLL PAPER TOWEL DISPENSER**

Holds standard paper towel roll up to 6" (152 mm) diameter; heavy-duty aluminum casting with satin-matte, silver-grey finish. Designed for controlled delivery of towels, and its concealed locking device on molded plastic spindle prevents theft.

Overall Dimensions:
Unit measures 13" (330 mm) wide; projects 6" (152 mm) from wall.



0245-SS TRADITIONAL™ SURFACE MOUNTED PAPER TOWEL DISPENSER

Fabricated of 22 gauge stainless steel. This unit dispenses 400 single-fold paper towels.

Overall Dimensions:
11¹/₄" x 6¹/₄" x 5⁵/₈"
(285 x 160 x 143 mm)



0828 TRADITIONAL™ SURFACE MOUNTED WASTE RECEPTACLE

Fabricated of 22 gauge stainless steel with hemmed top and bottom edges for safety; holds 6.5 gal. (24.8 L) of waste.

Overall Dimensions:
14" x 18" x 6"
(356 x 457 x 152 mm)



0825 TRADITIONAL™ SURFACE MOUNTED WASTE RECEPTACLE

Fabricated of 22 gauge stainless steel; holds 17 gal. (64 L) with top and bottom hemmed edges; interior hooks for liner.

MODEL OPTION:
0826 has 12 gal. (45.4 L) capacity with 15¹/₄" x 23" x 8" (387 x 584 x 203 mm) dimensions.

Overall Dimensions:
15³/₄" x 21¹/₈" x 11³/₄"
(400 x 556 x 298 mm)



0810 TRADITIONAL™ FREESTANDING WASTE RECEPTACLE WITH TOP

Fabricated of 22 gauge stainless steel; holds 14.3 gal. (54 L); self-closing doors on top with vinyl wall bumpers, rubber feet and hooks for liners.

MODEL OPTION:
0812 has 19.4 gal. (73.4 L) capacity with 13" x 38¹/₂" x 12¹/₄" (330 x 978 x 311 mm) dimensions.

Overall Dimensions:
13" x 30¹/₂" x 12¹/₄"
(330 x 775 x 311 mm)



0811 TRADITIONAL™ FREESTANDING OPEN WASTE RECEPTACLE

Fabricated of 22 gauge stainless steel; holds 14.3 gal. (54 L); self-closing doors on top with vinyl wall bumpers, rubber feet and hooks for liners.

MODEL OPTION:
0813 has 19.4 gal. (73.4 L) capacity with 13" x 30" x 12¹/₄" (330 x 762 x 311 mm) dimensions.

Overall Dimensions:
13" x 22" x 12¹/₄"
(330 x 559 x 311 mm)



0827 TRADITIONAL™ SURFACE MOUNTED WASTE RECEPTACLE

Fabricated of 22 gauge stainless steel with hemmed top and bottom edges for safety; capacity of 2 gal. (7.6 L) of waste.

Overall Dimensions:
10¹/₂" x 9" x 4³/₄"
(267 x 229 x 121 mm)



0829 CORNER WASTE RECEPTACLE

Fabricated of 22 gauge stainless steel with hemmed top and bottom edges for safety; capacity of 16 gal. (60 L) of waste.

Overall Dimensions:
15" x 23" x 14¹/₂"
(381 x 584 x 368 mm)



4004 TRADITIONAL™ UNDER VANITY TOWEL DISPENSER AND WASTE RECEPTACLE

Dispenses 300 C-fold or 475 multi-fold paper towels and has a waste capacity of 10 gal. (38 L). Waste disposal door is spring loaded to remain shut. Fabricated of 20 gauge stainless steel.

Unit Size: 17⁷/₁₆" x 24" x 14⁷/₁₆"
(443 x 610 x 367 mm)

Under Mount Requirements: 17¹/₂" x 30" x 14¹/₂"
(445 x 762 x 368 mm)

Exposed Cabinet Size:
13¹/₂" x 24" x 12¹/₂"
(343 x 610 x 318 mm)



1000 TRADITIONAL™ CIRCULAR COUNTER TOP WASTE CHUTE

Provides waste deposit access to receptacle (not furnished) placed directly below chute; made of heavy gauge stainless steel with rolled flange and exposed surfaces that have satin finish.

MODEL OPTION:
1000A has a 9" (229 mm) outside diameter with a counter opening of 8⁵/₈" (206 mm) diameter.

Unit Size: 6³/₄" (171 mm) outside diameter

Counter Opening: 5³/₄" (146 mm) diameter



1001 TRADITIONAL™ COUNTER TOP MOUNTED PAPER TOWEL DISPENSER/WASTE RECEPTACLE

Capacity of 1 package of C-fold paper towels for loading by pushing through hinged dispensing flaps. Loose waste receptacle to be placed directly below waste door on the vanity floor is provided. Capacity is 7.5 gal. (28 L).

Unit Size: 14¹/₄" x 15" x 3³/₃₂"
(362 x 381 x 2 mm)

Counter Opening: 12¹/₂" x 13¹/₂"
(318 x 343 mm)



1002 TRADITIONAL™ COUNTER TOP MOUNTED PAPER TOWEL DISPENSER

Capacity of 1 package of C-fold paper towels for loading by pushing downward through hinged dispensing flaps.

Unit Size: 14¹/₄" x 6" x 3³/₃₂"
(362 x 152 x 2 mm)

Counter Opening: 12¹/₂" x 4¹/₄"
(318 x 108 mm)



1003 TRADITIONAL™ COUNTER TOP MOUNTED WASTE RECEPTACLE

Push door is self-closing. A 12" x 12" x 12" (305 x 305 x 305 mm) waste receptacle is furnished to be placed directly below waste door on the vanity floor.

Unit Size: 14¹/₄" x 10" x 3³/₃₂"
(362 x 254 x 2 mm)

Counter Opening: 8³/₄" x 12¹/₂"
(222 x 318 mm)

SHOWN: 20200 TRI-UMPH™
HIGH-SPEED HAND DRYER



TRI-Umph™ High-Speed Hand Dryer

This state-of-the-art, ergonomic, high-speed hand dryer is ultra-hygienic with an outstanding filter system. With air blowing down from vents above, users dry their hands in under 12 seconds. This hand dryer allows users to triumph over germs with fast

drying time and an optional ceramic backslash plate (AO247-TRBS) for extra protection from water splash-back. Easy to maintain, the TRI-Umph™ high-speed hand dryer makes perfect sense to meet all washroom needs.

WHAT MAKES TRI-Umph™ UNIQUE?



HIGH SPEED YET QUIETER AND ENERGY EFFICIENT

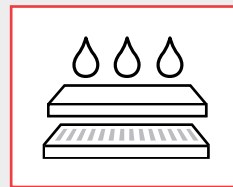
The TRI-Umph™ high-speed hand dryers take less than 12 seconds to completely dry hands.

Low Decibel Level:
62.9-67.2 dB-A @ 2M



ERGONOMIC

This unit is wall mounted at a comfortable height in order to permit a natural posture while drying the user's hands.



MOISTURE MANAGEMENT SYSTEM

Water blown from wet hands is pushed onto an absorbent and continuously evaporating ceramic plate, with any excess water channeled into a drip tray.



TRIPLE FILTER

Over 99% of airborne bacteria and particles as small as 0.3 microns are eliminated with this hand dryer's removable three-layer filter system.

TRI-Umph™ HIGH-SPEED HAND DRYER 2020 SILVER AND BLACK 2021 WHITE

FEATURES

- Ultra-hygienic
- Energy efficient
- Quieter
- Fast drying
- Ceramic Evaporator Plate captures water droplets
- Drip Tray prevents puddles on the floor
- Easy to maintain
- Operating LED lights

ULTRA HYGIENIC – THREE-LAYER FILTER

- HEPA—to capture airborne PARTICLES
- Antimicrobial—to fight BACTERIA
- Activated charcoal—to fight ODOR

Comes with an Antimicrobial ABS Cover with Silver Ions

DIMENSIONS

Unit size is
12^{11/16}" x 23^{1/8}" x 7^{3/4}"
(322 x 588 x 196 mm)

Net weight: 23.8 lbs. (10.8 kg)

VARIABLE SETTINGS

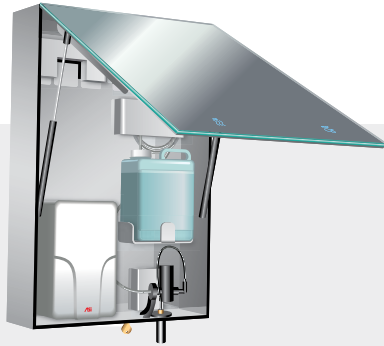
- Air flow can be lowered
- Heat can be turned on or off
- Save energy
- Reduce noise
- Gain operating flexibility

Optional Voltage Available



White





NEW

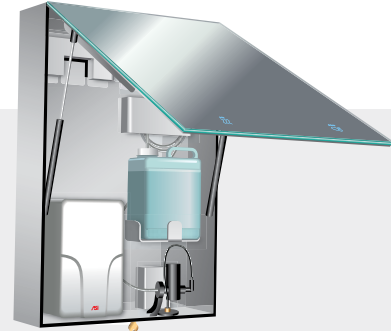
0661-1 VELARE™ STAINLESS STEEL CABINET WITH FRAMELESS MIRROR, LIQUID SOAP DISPENSER AND HIGH-SPEED HAND DRYER (110-120V)

This wall mounted stainless steel cabinet conceals a hands-free automatic liquid soap dispenser with a 1.5 gal (6 L) capacity and a high-speed hand dryer (110-120V) equipped with a HEPA filter. Available in 208-240V (0661-2).

Overall Dimensions:

23⁵/₈" x 35⁷/₁₆" x 7⁹/₁₆"
(600 x 900 x 192)

Decibel Level: 68-73.8 dB-A @ 2M



NEW

0663-1 VELARE™ STAINLESS STEEL CABINET WITH FRAMELESS MIRROR, FOAM SOAP DISPENSER AND HIGH-SPEED HAND DRYER (110-120V)

This wall mounted stainless steel cabinet conceals a hands-free automatic foam soap dispenser with a 1.5 gal (6 L) capacity and a high-speed hand dryer (110-120V) equipped with a HEPA filter. Available in 208-240V (0663-2).

Overall Dimensions:

23⁵/₈" x 35⁷/₁₆" x 7⁹/₁₆"
(600 x 900 x 192)

Decibel Level: 68-73.8 dB-A @ 2M



64672-1 SIMPLICITY™ 3-IN-1 PAPER TOWEL DISPENSER, HIGH SPEED HAND DRYER, AND WASTE RECEPTACLE

Paper towel dispenser with waste receptacle and <15 second automatic hand dryer, dispenses 500 standard multi-fold or 400 standard C-fold paper towels with a waste capacity of 6.8 gal. (26 L). Durable 20 gauge stainless steel cover has a satin finish. Dryer has 5-year warranty. 110-120V. Available in 208-240V (64672-2).

Unit Size:

15⁵/₈" x 55³/₈" x 7¹/₂"
(391 x 1407 x 191 mm)

Wall Opening:

14⁹/₃₂" x 54³/₈" x 7¹/₄"
(358 x 1381 x 184 mm)

Decibel Level: 68.9-74.3 dB-A @ 2M



NEW



64672-1 PIATTO™ COMPLETELY RECESSED 3-IN-1 PAPER TOWEL DISPENSER, HIGH SPEED HAND DRYER, AND WASTE RECEPTACLE

This unit comes with a phenolic door and concealed hardware, and is designed to be *completely* recessed into the plane of the washroom wall. Features a <15 second automatic hand dryer, dispenses 400 standard C-fold or 500 standard multi-fold paper towels with a waste capacity of 6.8 gal. (26 L). Dryer has 5-year warranty. 110-120V. Available in 208-240V (-2). For matte black phenolic door use suffix -41, for white use -00.

Unit Size:

15⁵/₈" x 55³/₈" x 7¹⁷/₃₂"
(391 x 1407 x 191 mm)

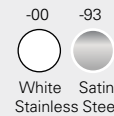
Finished Wall Opening*:

15⁷/₁₆" x 55⁷/₁₆" x 7⁵/₈"
(392 x 1408 x 194 mm)

Decibel Level: 68.9-74.3 dB-A @ 2M

All stainless steel is type 304 with satin finish, unless otherwise noted.

**All Piatto™ models require finished wall openings for installation. The edges of the finished wall opening are meant to be visible after installation, hence edges must be flat, square, straight, and plumb—no rough or unsightly edges.*



NEW

0192 TURBO Swift™ ADA HIGH-SPEED HAND DRYER

High-speed ADA-compliant automatic hand dryer has one piece stainless steel cover with satin finish and delivers eco-friendly and cost-saving performance. Includes adjustable infrared sensor and LED indicates power status and guides user towards air flow. Fast drying, <12 seconds. 110-120V.

Overall Dimensions:

6²⁷/₃₂" x 10¹/₁₆" x 4"
(174 x 256 x 102 mm)



Decibel Level: 74 dB-A @ 2M

0196-41 TURBO-PRO™ HIGH-SPEED ADA HAND DRYER

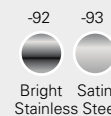
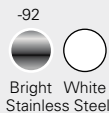
Elegant ADA-compliant, high-speed, automatic hand dryer. A HEPA filter is used to purify the air before it dries hands. The dryer provides operating flexibility—the owner controls air temperature as well as air speed. Fast drying, <15 seconds. Available in 110-120V (-1) and 208-240V (-2).

Overall Dimensions:

8⁵/₈" x 13⁹/₁₆" x 4"
(219 x 345 x 102 mm)



Decibel Level: 68-73.8 dB-A @ 2M



0199-93 ASI TURBO-ADA ACCESSIBILITY COMPLIANT HIGH-SPEED HAND DRYER

Fast drying, <15 seconds, and automatic operation using infrared sensor with auto-resetting thermostat. Owner-adjustable air speed & temperature and on/off heating options with shut off when user removes hands from sensor zone. Standard white cover; optional bright or satin stainless steel finish. Available in 110-120V (-1), 208-240V (-2), and 277V (-3).

Overall Dimensions:

10⁵/₈" x 8¹⁵/₃₂" x 4"
(270 x 215 x 102 mm)



Decibel Level: 68.9-74.3 dB-A @ 2M



0197 TURBO-DRI™ HIGH-SPEED HAND DRYER

Fast drying, <15 seconds, and powerful, yet quiet, with 60-second auto shut off; automatic operation using infrared sensor with auto-resetting thermostat. Heavy-duty, one-piece-formed unit in bright or satin stainless steel finish, or white porcelain enamel coated steel. Available in 115-120V (-1) and 208-240V (-2).

Overall Dimensions:

8¹/₁₆" x 11¹³/₆₄" x 7⁵/₆₄"
(205 x 287 x 180 mm)



Decibel Level: 61.2-65.2 dB-A @ 2M

*ADA Compliant using Semi-Recessed Kit #0119



0135 TURBO-TUFF FULLY RECESSED HIGH-SPEED HAND DRYER

Fast drying, <15 seconds, and operates automatically using infrared sensor with auto-resetting thermostat. Owner-adjustable air speed & temperature and on/off heating options. Dryer automatically shuts off after time-out when user removes hands from sensor zone. Available in 110-120V (-1), 208-240V (-2), and 277V (-3).

Unit Size: 12¹⁹/₃₂" x 15³/₄" x 4¹/₁₆"
(320 x 400 x 103 mm)

Wall Opening: 12²/₁₆" x 15³/₁₆" x 3⁷/₈"
(313 x 386 x 98 mm)

Decibel Level:
68.9-74.3 dB-A @ 2M



0198-MH SAFE-DRI™ RECESSED MENTAL HEALTH APPROVED HIGH-SPEED HAND DRYER

Anti-ligature dryer operates automatically and is designed for Behavioral Health environments—angled top, welded corners, and single tube exhaust prevent looping, tying off, wedging, and prying. Tamper-resistant 18 gauge stainless steel cover, and flush pin-hex security screws. Available in 115-120V (-1) and 208-240V (-2).

Unit Size: 12⁵/₈" x 15³/₄" x 5⁴/₁₆"
(320 x 400 x 140 mm)

Wall Opening: 12¹/₄" x 15³/₁₆" x 5¹/₄"
(311 x 386 x 133 mm)

Decibel Level:
66 dB-A @ 2M

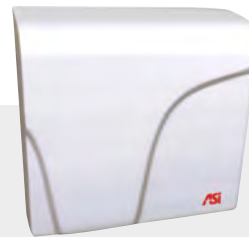


0141 PORCELAIR HAND DRYER

Fabricated of one-piece, heavy-duty cast aluminum with white enamel coating. Quick drying, <30 seconds, and no-touch, energy efficient operation. Dries both hands and face. 120V.

Overall Dimensions:
9⁷/₁₆" x 9⁴¹/₆₄" x 6³/₈"
(240 x 245 x 162 mm)

Decibel Level: 60-66 dB-A @ 2M

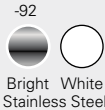


0165 PROFILE™ COMPACT HAND DRYER

Operates automatically from IR sensor that activates dryer when hands are placed in sensor zone. Motor and heating element have internal resetting automatic thermal protection. Fabricated of one-piece, heavy-duty cast aluminum with white enamel coating. Quick drying, <30 seconds. 115-240V.

Overall Dimensions:
11³/₈" x 11⁷/₃₂" x 3⁷/₈"
(289 x 285 x 99 mm)

Decibel Level: 66 dB-A @ 2M



0185-93 PROFILE™ HAND DRYER

Universal voltage; automatically adjusts to voltages of 100-240V. Quick drying, <25 seconds, and no-touch, energy efficient operation. Modern design and durable. Cover available in one-piece steel with porcelain enamel coating, or stainless steel in bright or satin finish.

MODEL OPTION:

0184 Surface mounted no-touch hand dryer, 277V.

Overall Dimensions:

14⁷/₁₆" x 10¹³/₁₆" x 3¹⁵/₁₆"
(367 x 275 x 100 mm)

Decibel Level: 69.2 dB-A @ 2M

20199 ROVAL™ SEMI-RECESSED HIGH-SPEED HAND DRYER

This high-performing hand dryer, with a drying time of 10-15 seconds, has a cover made of 18 gauge stainless steel. Available in 120V (-1) and 240V (-2).

Unit Size:

11" x 15¹/₂" x 5²³/₃₂"
(279 x 394 x 145 mm)

Wall Opening:

10¹/₂" x 14⁵/₈" x 3¹/₄"
(267 x 371 x 83 mm)

Decibel Level: 69 dB-A @ 2M



0195 PROFILE™ HAND DRYER WITH PORCELAIN ENAMEL COATED CAST IRON COVER

Universal voltage; automatically adjusts to voltages of 100 to 240 VAC - 50/60 Hz. Quick drying, <25 seconds, and no-touch, energy efficient operation. Modern design and durable.

Overall Dimensions:

15³/₃₂" x 11⁷/₃₂" x 3¹⁵/₁₆"
(383 x 285 x 100 mm)

Decibel Level: 69.2 dB-A @ 2M



0198-93 TURBO-DRI™ Jr. HIGH SPEED HAND DRYER

Powerful, fast drying, <15 seconds, yet quiet (69 dB-A); automatic operation and resetting thermostat with 2-second delayed turn off. Cover fabricated of heavy-duty, one-piece-formed steel with white enamel, or satin finish stainless steel. Available in 110-120V and 220-240V.

Overall Dimensions:

9²⁵/₃₂" x 6⁵/₈" x 5¹³/₃₂"
(248.3 x 168.2 x 137.5 mm)

Decibel Level: 66 dB-A @ 2M



EZ Fill™ Top Fill Multi-Feed Soap Dispensing System

SHOWN: 0397-1AC EZ FILL™ WATER FAUCET – CHROME,
0394-1AC EZ FILL™ FOAM SOAP DISPENSER – CHROME, and
0394-1AC-41 EZ FILL™ FOAM SOAP DISPENSER – MATTE BLACK



EZ FILL™ FEATURES

- Top-fill, expandable system
- Heavy-duty brass soap dispensers and water faucets with chrome plated and matte black finishes
- Available in liquid and foam soap
- Counter-mounted port has an anti-theft cover
- Easy to use
- This EZ FILL™ system is electrically operated using batteries or alternating current
- Anti-Rotation Flange

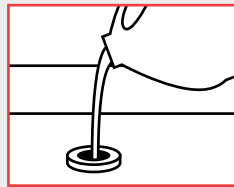


WHAT MAKES EZ FILL™ SOAP DISPENSING SYSTEM UNIQUE?

Up to
6
dispensers

MULTI-FEED SYSTEM

Using infrared sensors, each of up to 6 automatic soap dispensers is fed by its own controllable peristaltic pump.



EASY REFILL

Using a single soap reservoir, this top-fill system allows refill of up to 6 soap dispensers with 1 pour—for easy ongoing maintenance.




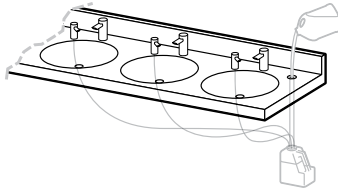
UNIVERSAL REMOTE

Controls all dispensers with one remote, allowing flexibility in settings with a choice of 4 presets.

Up to
6
liter capacity

RANGE OF SIZES FOR ALL NEEDS

Holds 6 L of liquid soap to supply up to six (6) individual EZ FILL™ vanity mounted automatic soap dispenser units.

INDIVIDUAL					MULTI-FEED SYSTEM (UP TO 6)				
 <p>Individual vanity mounted automatic soap dispenser is refilled by removing 1 liter bottle from EZ FILL™ bracket under the counter.</p>					 <p>The only top-fill soap dispensing system that can refill up to six soap dispensers with one pour.</p>				
Soap Heads	Individual Chrome	6 Pack SKU ¹	Individual Matte Black	6 Pack SKU ¹	Soap Heads	Individual	6 Pack SKU ¹	Individual Matte Black	6 Pack SKU ¹
LIQUID	0391-1AC	0391-6-1AC	0391-1AC-41	0391-6-1AC-41	LIQUID	0390-1AC	0390-6-1AC	0390-1AC-41	0390-6-1AC-41
	0391-1A	0391-6-1A	0391-1A-41	0391-6-1A-41		0390-1A	0390-6-1A	0390-1A-41	0390-6-1A-41
FOAM	0394-1AC	0394-6-1AC	0394-1AC-41	0394-6-1AC-41	FOAM	0393-1AC	0393-6-1AC	0393-1AC-41	0393-6-1AC-41
	0394-1A	0394-6-1A	0394-1A-41	0394-6-1A-41		0393-1A	0393-6-1A	0393-1A-41	0393-6-1A-41

Faucets	
CHROME	0397-1AC
	0397-1A
MATTE BLACK	0397-1AC-41
	0397-1A-41

TOP FILL, MULTI-FEED SYSTEM REQUIRES (A) AND (B)

(A) 0390 - Multi-Feed Kit³ - Kit³ includes a 6 Liter Soap Container, Top Fill Tube and Counter Fill Port with Cover (B) Multi-Feed - Soap Dispenser Head(s)⁴

EZ FILL™ ACCESSORIES

0390-BR- Optional Under Counter Mounting Bracket for 6 Liter Container 0390-ARK- Anti-Rotation Kit for all 0390 Series 0393-R- Remote Control¹ to adjust foam dispensing settings

Stand Alone Dispensers come standard with 1 Liter soap container

¹ One Remote Control provided at no charge, with the 6 Pack SKU
² Powered by 6 D-size batteries (not included)

³ Kit does not include soap dispenser heads
⁴ Soap Dispenser Heads do not come with Multi-Feed Kit



0397 EZ FILL™ WATER FAUCET – CHROME

Matching water faucet for EZ Fill™ soap dispensing system. Constructed of chrome plated spout and battery or AC power operated, hands-free sensor housing with a highly polished, or matte black (-41) finish over all surfaces.



0362-41 AUTOMATIC SURFACE MOUNTED LIQUID SOAP DISPENSER – MATTE BLACK

Stainless steel soap dispenser in satin finish with proximity sensor. Powered by 6 AA-size batteries (not included) and has tamper-resistant viewing window. Suitable for dispensing higher viscosity/antimicrobial soap. Capacity: 27 oz. (0.8 L) when using a disposable soap cartridge or 30 oz. (0.9 L) when using the refillable soap cartridge.

Overall Dimensions:
4¹³/₁₆" x 10⁵/₈" x 4¹/₈"
(122 x 270 x 105 mm)



0362 AUTOMATIC SURFACE MOUNTED LIQUID SOAP DISPENSER

Stainless steel soap dispenser in satin finish with proximity sensor. Powered by 6 AA-size batteries (not included) and has tamper-resistant viewing window. Suitable for dispensing higher viscosity/antimicrobial soap. Capacity: 27 oz. (0.8 L) when using a disposable soap cartridge or 30 oz. (0.9 L) when using the refillable soap cartridge.

Overall Dimensions:
4¹³/₁₆" x 10⁵/₈" x 4¹/₈"
(122 x 270 x 105 mm)



20333 AUTOMATIC VANITY MOUNTED LIQUID SOAP DISPENSER

Unit has chrome plated brass on exposed surfaces. Powered by 4 D-size batteries (not included). LEDs indicate function, battery condition, and soap supply level on face front. Translucent tank. Capacity: 54 oz. (1.6 L) of liquid soap.

Overall Dimensions:
4" x 21¹/₂"
(102 x 546 mm)

Spout Projection: 3⁷/₈" (99 mm)



20334 AUTOMATIC VANITY MOUNTED FOAM SOAP DISPENSER

Unit has chrome plated brass on exposed surfaces. Powered by 4 D-size batteries (not included). LEDs indicate function, battery condition, and soap supply level on face front. Translucent tank. Capacity: 54 oz. (1.6 L) of foam soap.

Overall Dimensions:
6³/₄" x 16"
(172 x 407 mm)

Spout Projection: 3⁷/₈" (99 mm)



0360 AUTOMATIC SURFACE MOUNTED LIQUID SOAP DISPENSER

Stainless steel soap dispenser in satin finish with proximity sensor. Powered by 6 AA-size batteries (not included) and has tamper-resistant viewing window, removable lid with special lock and key. Capacity: 35 fl. oz. (1 L).

Overall Dimensions:
4¹⁷/₃₂" x 9¹/₄" x 4¹/₈"
(115 x 235 x 124 mm)



0336 VANITY MOUNTED MANUAL FOAM SOAP DISPENSER

Plunger cap, stem and body, spout, escutcheon, and base sleeve fabricated of stainless steel. Soap container is translucent, shatter-resistant HDPE with 34 oz. (1 L) capacity.

MODEL OPTION:

0336-D 6" (152 mm) spout projection.

Unit Size:

3½" x 15¼"
(87 x 271 mm)

Spout projection: 4" (102 mm)



0334-S AUTOMATIC VANITY MOUNTED LIQUID SOAP DISPENSER

Hands-free liquid soap dispenser powered by 4 AA-size batteries (not included) or optional AC adapter (72-ACA, not included). Stainless steel body, all exposed stainless steel surfaces have a satin finish. Capacity: 50.7 oz. (1500 ml).

MODEL OPTION:

0334-B Stainless steel with bright finish.

Unit Size:

1½" x 3¹³⁄₁₆" (38 x 97 mm)
(dispenser body only)

Spout projection: 3⁷⁄₈" (98 mm)



NEW

0338 TOP FILL AUTOMATIC VANITY MOUNTED LIQUID SOAP DISPENSER

Anti-theft top opens with funnel that has built in key for neat and easy maintenance. LED ring indicates low liquid soap levels and incorrect soap. Smart Sensor prevents messy overfilling by beeping and flashing LED ring. AC Powered, 51 oz. (1.5 L) capacity.

Unit Size:

1½" x 5½" (38 x 137 mm)

(dispenser body only)

Spout projection: 3⁷⁄₈" (98 mm)



0332 VANITY MOUNTED MANUAL LIQUID SOAP DISPENSER

Corrosion-resistant valve with stainless steel spout and chrome plated brass escutcheon plate.

MODEL OPTIONS:

	Capacity	Spout
0332	34 oz. (1.0 L)	4" (102 mm)
0332-C	20 oz. (0.6 L)	4" (102 mm)
0332-CD	20 oz. (0.6 L)	6" (152 mm)
0332-D	34 oz. (1.0 L)	6" (152 mm)

Unit Size:

3⅜" x 10²¹⁄₃₂"
(87 x 271 mm)



0335-B AUTOMATIC VANITY MOUNTED FOAM SOAP DISPENSER

Hands-free foam soap dispenser powered by 4 AA-size batteries (not included) or optional AC adapter (72-ACA, not included). Stainless steel body, all exposed stainless steel surfaces have a bright finish. Capacity: 50.7 oz. (1500 ml).

MODEL OPTION:

0335-S Stainless steel with satin finish.

Unit Size:

1½" x 3¹³⁄₁₆" (38 x 97 mm)
(dispenser body only)

Spout projection: 3⁷⁄₈" (98 mm)



NEW

0339 TOP FILL AUTOMATIC VANITY MOUNTED FOAM SOAP DISPENSER

Anti-theft top opens with funnel that has built in key for neat and easy maintenance. LED ring indicates low foam soap levels and incorrect soap. Smart Sensor prevents messy overfilling by beeping and flashing LED ring. AC Powered, 51 oz. (1.5 L) capacity.

Unit Size:

1½" x 5³⁄₈" (38 x 137 mm)

(dispenser body only)

Spout projection: 3⁷⁄₈" (98 mm)



0347 VERTICAL SOAP DISPENSER
0345 HORIZONTAL SOAP DISPENSER

40 fl. oz. (1.2 L) capacity liquid soap dispenser in stainless steel; satin finish comes with an all-purpose valve and a tamper-resistant refill indicator.

0347 Unit Size:
 $4\frac{13}{16}'' \times 8\frac{3}{16}'' \times 3\frac{15}{16}''$
 (122 x 208 x 100 mm)

0345 Unit Size:
 $8\frac{3}{16}'' \times 4\frac{13}{16}'' \times 3\frac{15}{16}''$
 (208 x 122 x 100 mm)

Spout projection: $\frac{15}{16}''$ (24 mm)



9343 HORIZONTAL SURFACE MOUNTED LIQUID SOAP DISPENSER

All-purpose valve dispenses liquid soap, with a capacity of 48 fl. oz. (1.4 L). It has a tamper-resistant refill window with concealed fastening and vandal-resistant hinged filler-top.

Overall Dimensions:
 $7\frac{1}{4}'' \times 6\frac{1}{2}'' \times 3\frac{11}{16}''$
 (184 x 165 x 94 mm)

Spout Projection: $\frac{15}{16}''$ (24 mm)



5001-SS DISPOSA-VALVE SURFACE MOUNTED LIQUID SOAP DISPENSER

Soap is forced through disposable valve by pulling a lever forward. Disposable cartridges are available to dispense soap, hand lotion, heavy duty cleaner, waterless cleaner, and antiseptic soap and are typically good for 1500 washings. Typical soap cartridges are super-concentrated cleansing formula approved for medical and food handling facilities. Fabricated of stainless steel.

Overall Dimensions:
 $4\frac{1}{4}'' \times 11'' \times 4''$
 (108 x 279 x 102 mm)



20365 ROVAL™ AUTOMATIC SURFACE MOUNTED FOAM SOAP DISPENSER

Hands-free foam soap dispenser powered by 4 AA-size batteries (not included). A foam drop is dispensed out of the nozzle on unit bottom each time its sensor is activated. Translucent removable internal tank for easy-to-view level. Capacity: 34 oz. (1 L).

Overall Dimensions:
 $5\frac{1}{2}'' \times 10\frac{3}{4}'' \times 4''$
 (140 x 273 x 102 mm)



20364 ROVAL™ AUTOMATIC SURFACE MOUNTED LIQUID SOAP DISPENSER

Hands-free liquid soap dispenser powered by 6 AA-size batteries (not included). Dispensing cycles adjustable with tamper-proof magnetic key. Seamless drawn stainless steel cover. Translucent removable internal tank for easy-to-view level. LED indicates adjustment and operation. Capacity: 34 oz. (1 L).

Overall Dimensions:
 $5\frac{1}{2}'' \times 10\frac{7}{8}'' \times 4''$
 (140 x 276 x 102 mm)

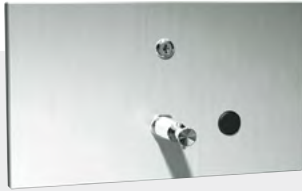


20363 ROVAL™ SURFACE MOUNTED LIQUID SOAP DISPENSER

Push button operation, valve needs no more than 5 lbs. of pressure to actuate. Dispenses liquid soap Capacity: 57 oz. (1.7 L).

Overall Dimensions:
 $5\frac{1}{2}'' \times 10\frac{13}{16}'' \times 4''$
 (139 x 274 x 102 mm)

Spout Projection: $\frac{15}{16}''$ (24 mm)



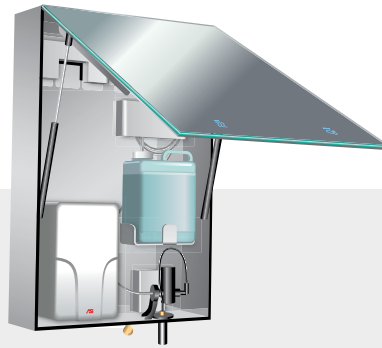
0326 RECESSED HORIZONTAL LIQUID SOAP DISPENSER

Stainless steel with satin finish, all-purpose soap valve, 57 fl. oz. (1.7 L) liquid soap capacity.

Unit Size:
10¼" x 6" x 4½"
(260 x 152 x 115 mm)

Wall Opening:
9" x 4⅞" x 4"
(229 x 124 x 102 mm)

Spout Projection: 2½" (64 mm)



NEW

0661-1 VELARE™ STAINLESS STEEL CABINET WITH LIQUID SOAP DISPENSER AND HIGH-SPEED HAND DRYER

This wall mounted stainless steel cabinet conceals a hands-free automatic liquid soap dispenser with a 1.5 gal (6 L) capacity and a high-speed hand dryer (110-120V) equipped with a HEPA filter.

MODEL OPTION:
0661-2 Velare™ Stainless Steel Cabinet with Liquid Soap and Hand Dryer (208~240V).

Overall Dimensions:
23⁵/₈" x 35⁷/₁₆" x 7⁹/₁₆"
(600 x 900 x 192)



NEW

0663-1 VELARE™ STAINLESS STEEL CABINET WITH FOAM SOAP DISPENSER AND HIGH-SPEED HAND DRYER

This wall mounted stainless steel cabinet conceals a hands-free automatic foam soap dispenser with a 1.5 gal (6 L) capacity and a high-speed hand dryer (110-120V) equipped with a HEPA filter.

MODEL OPTION:
0663-2 Velare™ Stainless Steel Cabinet with Foam Soap and Hand Dryer (208~240V).

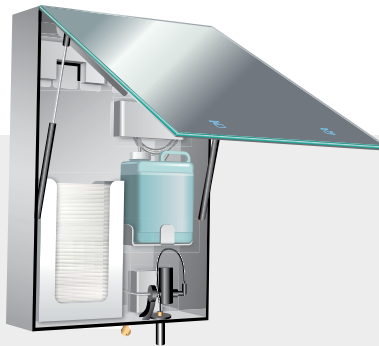
Overall Dimensions:
23⁵/₈" x 35⁷/₁₆" x 7⁹/₁₆"
(600 x 900 x 192)



0361 AUTOMATIC SURFACE MOUNTED LIQUID SOAP DISPENSER

White, high-impact plastic, proximity sensor, and powered by one 9V or 6 AA-size batteries (not included). Tamper-resistant soap level viewing window, swing open body with special lock and key. Capacity: 28 fl. oz. (0.8 L).

Overall Dimensions:
4⁵/₈" x 10⁵/₁₆" x 4⁷/₁₆"
(118 x 262 x 113 mm)



NEW

0661-T VELARE™ STAINLESS STEEL CABINET WITH LIQUID SOAP DISPENSER, AND PAPER TOWEL DISPENSER

This wall mounted stainless steel cabinet conceals a hands-free automatic liquid soap dispenser with a 1.5 gal (6 L) capacity and paper towel dispenser with a 500 towel capacity.

Overall Dimensions:
23⁵/₈" x 35⁷/₁₆" x 7⁹/₁₆"
(600 x 900 x 192)



NEW

0663-T VELARE™ STAINLESS STEEL CABINET WITH FOAM SOAP DISPENSER, AND PAPER TOWEL DISPENSER

This wall mounted stainless steel cabinet conceals a hands-free automatic liquid soap dispenser with a 1.5 gal (6 L) capacity and paper towel dispenser with a 500 towel capacity.

Overall Dimensions:
23⁵/₈" x 35⁷/₁₆" x 7⁹/₁₆"
(600 x 900 x 192)



Mirrors

ASI provides mirrors for every location, application, and budget—in virtually any size available. Choose from a variety of reflective surfaces and wall mountings, as well as styles ranging from frameless mirrors to mirrors with shelves and tilting features. Mirror silver guaranteed for 15 years.

SHOWN: 20650 ROVAL™ STAINLESS STEEL MIRROR

OPTIONAL REFLECTIVE SURFACES

SUFFIX DESCRIPTION:

- B Tempered Glass** ¼" (6 mm) polished tempered glass
- C Stainless Steel Mirrors** Type 304 Stainless Steel polished to a #8 mirror finish
- D Lexan Dura-Mir™** Fabricated of ¼" (6 mm) polycarbonate sheet
- E Plexiglas®** ¼" (6 mm) acrylic plastic, lightweight and shatter-resistant
- L Laminated Glass** ¼" (6 mm) thick

Note for Designers: All of the above glazing options are particularly suited to applications where frequent breakage and/or security problems exist. These surfaces are best specified for use in prisons, schools, police stations, psychiatric wards, etc., where shards of broken glass might possibly be used as weapons. The reflective quality of these types of mirrors is not as true as plate glass.



0620 CHANNEL FRAME MIRROR

½" x ½" (13 x 13 x 13 mm) 20 gauge type 304 satin finish stainless steel channel is a one-piece roll formed member that encases mirror and backing revealing a tight mitered corner. Mirror is installed on two wall brackets and held secure by theft-resistant screws.



0605 ANGLE FRAME MIRROR WITH SHELF

0625 CHANNEL FRAME MIRROR WITH SHELF

18 gauge stainless steel shelf with satin finish and all edges returned and hemmed for maximum rigidity and safety. Shelf is welded to face frame and is 5" (127 mm) deep.



0535 FIXED TILT MIRROR
Offers visibility for wheelchair patients. Frame fabricated of 20 gauge stainless steel with a satin finish. Mirror is tapered from 4" (102 mm) at top to 1" (25 mm) at bottom.



8026 FRAMELESS STAINLESS STEEL MIRROR
Fabricated of 20 gauge type 304 stainless steel polished to a #8 mirror finish with a 5/16" (8 mm) return. Provided with 1/4" (6 mm) thick concealed tempered masonite backing and 4 mounting holes.



0600 ANGLE FRAME MIRROR
3/4" x 5/8" (19 x 16 mm) roll formed 18 gauge type 304 stainless steel angle has corners heliarc welded, ground and polished smooth to a uniform satin finish. Mirror is installed on a concealed hanging bracket that locks onto top and bottom of frame by tamper-proof set screws. Back plate is one-piece, attached to frame with theft-resistant locking device.



20650 ROVAL™ STAINLESS STEEL MIRROR
20655 ROVAL™ STAINLESS STEEL MIRROR WITH INTEGRAL SHELF
Gently radiused edges match the ASI Roval™ design. Frame fabricated of 18 gauge type 304 stainless steel with satin finish and polished seamless mitered corners. 0.25" (6.4 mm) thick plate glass mirror.



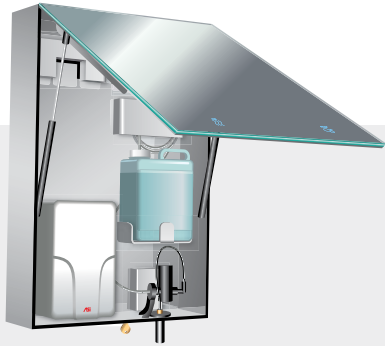
8287 FRAMELESS MIRROR
Frameless mirrors offer clean lines to complement every type of interior design and are easy to care for. One-piece can be up to 28 sq. ft. (2.6 m²), as long as either H or W dimension is less than 84" (2134 mm). Mirrors larger than 28 sq. ft. (2.6 m²) or with either linear H or W dimension larger than 84" (2134 mm) shall be supplied as multiple pieces. Made of 1/4" polished plate glass.



0600-T ADJUSTABLE TILT MIRROR
Designed to provide easy visibility for wheelchair patients or return to upright position. Angle frame fabricated of 18 gauge stainless steel with corners welded and ground smooth. Tilts a full 6" (152 mm) with bottom mounted on full width stainless steel piano hinge.

STANDARD MIRROR SIZES												
Width x Height	0535	0537	0600	0600-T	0605	0620	0625	8026	20650	20650-B	20655	20655-B
16" x 20" (41 x 51 cm)			■		■	■		■				
16" x 24" (41 x 61 cm)			■	■	■	■	■	■				
16" x 30" (41 x 76 cm)	■	■	■	■		■						
18" x 24" (46 x 61 cm)	■		■	■	■	■	■	■				
18" x 30" (46 x 76 cm)	■	■	■	■	■	■	■	■	■	■	■	■
18" x 36" (46 x 91 cm)	■	■	■	■	■	■	■		■	■	■	■
20" x 60" (51 x 152 cm)			■			■						
24" x 24" (61 x 61 cm)						■						
24" x 30" (61 x 76 cm)	■		■		■	■	■	■				
24" x 36" (61 x 91 cm)	■		■	■	■	■	■	■	■	■	■	■
24" x 42" (61 x 107 cm)			■			■						
24" x 48" (61 x 122 cm)			■			■						
24" x 60" (61 x 152 cm)			■			■						
24" x 72" (61 x 183 cm)			■									
30" x 36" (76x 91 cm)			■			■						
30" x 48" (76x 122 cm)						■						
36" x 36" (91x 91 cm)			■			■						
36" x 48" (91 x 122 cm)						■						
48" x 30" (122 x 76 cm)			■		■	■						
48" x 36" (122 x 91 cm)			■		■	■						
60" x 24" (152 x 61 cm)			■		■	■						
60" x 36" (152 x 91 cm)			■		■	■						
72" x 36" (183 x 91 cm)			■		■	■						

Custom sizes available upon request. Standard glazing is glass. See optional reflective surfaces on page 62.



NEW

0661-1 VELARE™ STAINLESS STEEL CABINET WITH FRAMELESS MIRROR, LIQUID SOAP DISPENSER AND HIGH-SPEED HAND DRYER (110-120V)

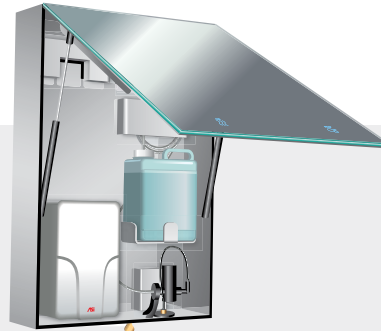
This wall mounted stainless steel cabinet conceals a hands-free automatic liquid soap dispenser with a 1.5 gal (6 L) capacity and a high-speed hand dryer (110-120V) equipped with a HEPA filter.

MODEL OPTION:

0661-2 Velare™ Stainless Steel Cabinet with Liquid Soap and Hand Dryer (208~240V).

Overall Dimensions:

23⁵/₈" x 35⁷/₁₆" x 7⁹/₁₆"
(600 x 900 x 192)



NEW

0663-1 VELARE™ STAINLESS STEEL CABINET WITH FRAMELESS MIRROR, FOAM SOAP DISPENSER AND HIGH-SPEED HAND DRYER (110-120V)

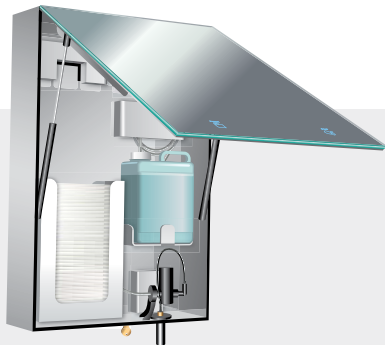
This wall mounted stainless steel cabinet conceals a hands-free automatic foam soap dispenser with a 1.5 gal (6 L) capacity and a high-speed hand dryer (110-120V) equipped with a HEPA filter.

MODEL OPTION:

0663-2 Velare™ Stainless Steel Cabinet with Foam Soap and Hand Dryer (208~240V).

Overall Dimensions:

23⁵/₈" x 35⁷/₁₆" x 7⁹/₁₆"
(600 x 900 x 192)



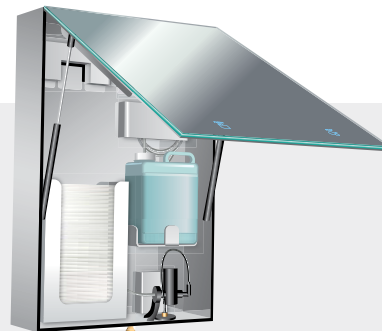
NEW

0661-T VELARE™ STAINLESS STEEL CABINET WITH FRAMELESS MIRROR, LIQUID SOAP DISPENSER AND PAPER TOWEL DISPENSER

This wall mounted stainless steel cabinet conceals a hands-free automatic liquid soap dispenser with a 1.5 gal (6 L) capacity and paper towel dispenser with a 500 towel capacity.

Overall Dimensions:

23⁵/₈" x 35⁷/₁₆" x 7⁹/₁₆"
(600 x 900 x 192)



NEW

0663-T VELARE™ STAINLESS STEEL CABINET WITH FRAMELESS MIRROR, FOAM SOAP DISPENSER AND PAPER TOWEL DISPENSER

This wall mounted stainless steel cabinet conceals a hands-free automatic liquid soap dispenser with a 1.5 gal (6 L) capacity and paper towel dispenser with a 500 towel capacity.

Overall Dimensions:

23⁵/₈" x 35⁷/₁₆" x 7⁹/₁₆"
(600 x 900 x 192)

M I R R O R S



NEW

0661-FM-14 VELARE™ STAINLESS STEEL FRAMELESS MIRROR FILLER MODULE

Wall mounted type 304 stainless steel cabinet filler module provides spacing between other Velare™ BTM modules where needed. Mirror is made from 1/4" (6 mm) thick frameless tempered glass conforming to ASTM C-1048 with pencil edges and eased corners with SS sheet intermediate stiffener and SS back plate with integral welded support mounts.

Overall Dimensions:
14³/₄" x 35⁷/₁₆" x 7⁹/₁₆"
(375 x 900 x 192)



NEW

0661-FM-23 VELARE™ STAINLESS STEEL FRAMELESS MIRROR FILLER MODULE

Wall mounted type 304 stainless steel cabinet filler module provides spacing between other Velare™ BTM modules where needed. Mirror is made from 1/4" (6 mm) thick frameless tempered glass conforming to ASTM C-1048 with pencil edges and eased corners with SS sheet intermediate stiffener and SS back plate with integral welded support mounts.

Overall Dimensions:
23¹/₄" x 35⁷/₁₆" x 7⁹/₁₆"
(591 x 900 x 192)

VELARE™ COLLECTION

ALL-IN-ONE CABINET HOUSES AN AUTOMATIC SOAP DISPENSER, AND YOUR CHOICE OF PAPER TOWEL DISPENSER OR HAND DRYER—NOW AVAILABLE WITH MIRROR FILLERS FOR FLEXIBILITY.

Backlit icons etched into the frameless mirror direct the user to their choice of soap and drying option. The self-contained design reduces hazards associated with wet floors. The 1/4" thick tempered glass mirror supported by twin, damped gas springs, opens up to 90° for easy maintenance.





Feminine Hygiene

ASI offers a wide range of feminine hygiene dispensers and disposal units, available as fully recessed, semi-recessed, or surface mounted with various capacities. Type 304 stainless steel fabrication with satin finish on exposed surfaces and 18 gauge doors secured with concealed full length stainless steel hinges. Coin boxes are keyed separately from door lock for maximum security. Available for 25¢, 50¢, or free operation.

SHOWN: 0468 RECESSED SANITARY NAPKIN/TAMPON VENDOR



0464 SEMI-RECESSED SANITARY NAPKIN TAMPON VENDOR

Dispenses 30 feminine napkins and 27 tampons. Furnished with an adjustable flange for recessing in wall depths from 1" to 6" (26 to 152 mm). Universal coin mechanism allows for 25¢, 50¢, and free (no coin) operation. Choose appropriate suffix (-25, -50, or -F). Coin box has a separately keyed lock.

MODEL OPTION:
0864 Surface mounted.

Unit Size: 13 ³ / ₄ " x 28 ¹ / ₆ " x 6 ¹ / ₂ " (349 x 714 x 165 mm)	Wall Opening: 12 ¹ / ₂ " x 26 ¹ / ₂ " x 1" to 6" (318 x 673 x 25 to 152 mm)
--	--



6468 SIMPLICITY™ DUAL NAPKIN/TAMPON VENDOR

Dispenses 30 feminine napkins and 27 tampons. Universal coin mechanism allows for 25¢, 50¢, and free (no coin) operation. Choose appropriate suffix (-25, -50, or -F). Its door has 2 tumbler locks. Coin box has a separately keyed lock.

MODEL OPTION:
64684 designed for 4" (102 mm) wall opening; dispenses 15 napkins and 23 tampons.

Unit Size: 17 ¹ / ₄ " x 27 ¹ / ₄ " x 6 ¹ / ₂ " (438 x 692 x 165 mm)	Wall Opening: 16" x 26" x 6 ¹ / ₄ " (406 x 660 x 159 mm)
--	---





**0468 RECESSED SANITARY NAPKIN/
TAMPON VENDOR**

Dispenses 30 napkins and 27 tampons. Fabricated of 18 gauge stainless steel. Universal coin mechanism allows for 25¢, 50¢, and free (no coin) operation. Choose appropriate suffix (-25, -50, or -F).

MODEL OPTIONS:

0468-2 Semi-recessed with 2" stainless steel collar.

04684 Designed for 4" (102 mm) wall.

Dispenses 15 napkins, 23 tampons.

Unit Size:

17¹/₄" x 27¹/₄" x 6¹/₂"
(438 x 692 x 165 mm)

Wall Opening:

16" x 26" x 6"
(406 x 660 x 152 mm)



**204684 ROVAL™ RECESSED DUAL SANITARY NAPKIN
& TAMPON DISPENSER**

Dispenses 31 napkins and 22 tampons. Door is 18 gauge satin finish stainless steel, with 2 flush tumbler locks. Universal coin mechanism allows for 25¢, 50¢, and free (no coin) operation. Choose appropriate suffix (-25, -50, or -F).

MODEL OPTION:

204684-9 Surface mounted with 9" stainless steel collar.

Unit Size:

17³/₁₆" x 27³/₄" x 5⁵/₈"
(440 x 705 x 143 mm)

Wall Opening:

15⁵/₈" x 26¹/₈" x 4"
(397 x 664 x 102 mm)



**6471 SIMPLICITY™ RECESSED SANITARY
NAPKIN DISPOSAL**

Features a self-closing 20 gauge stainless steel push door that covers the disposal opening along with a removable 1.9 gal. (7.2 L) stainless steel waste receptacle.

Unit Size:

10⁵/₈" x 19⁵/₈" x 4¹/₂"
(270 x 498 x 114 mm)

Wall Opening:

9¹/₈" x 18¹/₈" x 4"
(232 x 460 x 102 mm)



**9471 PROFILE™ RECESSED SANITARY
NAPKIN DISPOSAL**

Features a self-closing 16 gauge stainless steel push door that covers the disposal opening along with a removable 1.9 gal. (7.2 L) stainless steel waste receptacle.

Unit Size:

10⁵/₈" x 19⁵/₈" x 4¹⁵/₁₆"
(270 x 498 x 125 mm)

Wall Opening:

9¹/₈" x 18¹/₈" x 4¹/₄"
(232 x 460 x 108 mm)

FEMININE HYGIENE VENDORS AND DISPOSALS



0472 PARTITION MOUNTED DUAL ACCESS NAPKIN DISPOSAL

Unit serves two compartments mounted in partitions. Receptacle removable from one side for servicing and locks to back of cabinet by means of stainless steel clips. Self-closing doors on each side are mounted to cabinet with heavy-duty full length piano hinge. 22 gauge stainless steel. Capacity: 1.5 gal. (5.7 L).

MODEL OPTION:

0472-1 Waste receptacle unit with lock.

Unit Size:

13" x 17¹/₄" x 4"
(330 x 438 x 102 mm)

Partition Opening:

11³/₈" x 15⁵/₈"
(290 x 400 mm)



0473 RECESSED SANITARY NAPKIN DISPOSAL

Unit features self-closing door and is fabricated of 22 gauge stainless steel. Capacity: 1.5 gal. (5.7 L).

MODEL OPTION:

0473-1 Waste receptacle unit with lock.

Unit Size:

13" x 17¹/₄" x 4¹/₄"
(330 x 438 x 108 mm)

Wall Opening:

11¹/₄" x 15³/₄" x 4"
(285 x 400 x 102 mm)



0473-A SURFACE MOUNTED END STALL SANITARY NAPKIN DISPOSAL

Unit features self-closing door and is fabricated of 22 gauge stainless steel. Capacity: 1.5 gal. (5.7 L).

MODEL OPTION:

0473-1A Waste receptacle unit with lock.

Overall Dimensions:

11" x 15¹/₄" x 4"
(279 x 387 x 102 mm)



0852 SURFACE MOUNTED SANITARY NAPKIN DISPOSAL

Sloping cover has full length piano hinge. Fabricated of 22 gauge stainless steel. Capacity: 1.2 gal. (4.5 L).

Overall Dimensions:

7⁷/₈" x 9¹/₁₆" x 4"
(200 x 246 x 102 mm)



20470 ROVAL™ RECESSED SANITARY NAPKIN DISPOSAL

Heavy-duty ⁹/₆₄" staked piano hinge adds to the robust construction. Drawn one-piece seamless door of 22 gauge stainless steel with a satin finish. 1.0 gal. (3.8 L) waste capacity.

Overall Dimensions:

12¹³/₁₆" x 11" x 5⁷/₁₆"
(325 x 280 x 138 mm)



20852 ROVAL™ SURFACE MOUNTED SANITARY WASTE RECEPTACLE

Lid is drawn one-piece construction and is secured to the cabinet with a heavy-duty ⁹/₆₄" multi-staked concealed piano hinge. Fabricated of 22 gauge stainless steel. Capacity: 1 gal. (3.8 L).

Overall Dimensions:

7¹/₄" x 10" x 3¹/₂"
(185 x 253 x 89 mm)



Specialty Accessories

With an extensive portfolio of washroom accessories, ASI can provide whatever you need to promote the neat and orderly use of your facilities. These designs reflect our attention to detail for durability and easy maintenance.

SHOWN: 0785-Z TOWEL RING



7385 TOWEL RING

For bath and hand towels. Ring is 4½" (114 mm) wide, made of ¼" (6 mm) diameter stainless steel bar. Projects 2½" (64 mm) from wall. 5" (127 mm) high.



8425 CLOTHES HOOK

Heavy-duty 11 gauge stainless steel with satin finish. Hook projects ¼" (32 mm) from wall and is 2¼" (57 mm) high.



0714 COAT AND BUMPER HOOK

Fabricated from chrome plated brass, 3" (76 mm). Neoprene bumper protects wall surface.

0719 DOOR BUMPER

Chrome plated Zamac 2¾" (56 mm) diameter flange. Projects 1½" (48 mm).



0745-Z DOUBLE ROBE HOOK

Fabricated from triple chrome plated rust-resistant Zamac.

MODEL OPTION:

0740-Z Single robe hook.

Overall Dimensions:

2³/₁₆" x 1⁷/₁₆" x 1²⁹/₆₄"
(56 x 37 x 37 mm)



7340 SINGLE ROBE HOOK

Fabricated from stainless steel. Hook extends 2" (51 mm) from wall.



7345 DOUBLE ROBE HOOK

4" (102 mm) wide stainless steel bar forms hook at each end. Unit extends 2" (51 mm) from wall.



7382 HAT AND COAT HOOK

Double hook made from stainless steel for both coats and hats.

Overall Dimensions:
2" x 7" x 3"
(51 x 178 x 76 mm).



0751 HEAVY-DUTY ROBE HOOK

Concealed mounting satin chrome plated brass, projects 3/4" (84 mm).

MODEL OPTION:
0751-A Exposed mounting, satin chrome plated brass projects 3/4" (83 mm).



0785-Z TOWEL RING

Bracket formed of Zamac and towel ring formed of triple chrome plated corrosion-resistant steel.

Overall Dimensions:
6 3/8" x 1 5/8"
(162 x 41 mm)



7301-B TOWEL PIN

Fabricated from stainless steel with bright finish. Extends 3 1/2" (89 mm) from wall.

MODEL OPTION:
7301-S Towel pin with satin finish.

Overall Dimensions:
2" x 2" x 3 1/2"
(51 x 51 x 89 mm)



0712 SURFACE-MOUNTED RETRACTABLE CLOTHES LINE

Polished stainless steel unit has spring actuated 72" (1829 mm) vinyl cord with white vinyl knob and locking nut to hold stretched line taut. Installs over bathtub or in shower.



0002-SM STAINLESS STEEL PAPER CUP DISPENSER

Dispenses 100 flat bottom cups. Adjustable for 3 oz. through 6 oz. cups. Stainless steel with bright finish.

MODEL OPTION:
0002-ASM A square version of the unit.

Overall Dimensions:
3" Diameter x 15"
(76 x 381 mm)

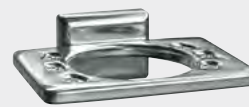


7320 SOAP DISH

Drawn, one-piece stainless steel soap dish welded to support arm and flange. Has two drain holes and two ridges to support bar of soap.

MODEL OPTION:
0721-Z Fabricated from triple chrome plated rust-resistant Zamak.

Overall Dimensions:
4 1/4" x 2" x 4"
(108 x 51 x 102 mm)



7335 TOOTHBRUSH AND TUMBLER HOLDER

Drawn, one-piece toothbrush holder is made of stainless steel. Has 2 1/4" (60 mm) diameter hole in center of unit to hold tumbler. Accommodates 6 toothbrushes.

MODEL OPTION:
0735-Z Fabricated from triple chrome plated rust-resistant Zamak.

Overall Dimensions:
4 1/4" x 2" x 4"
(108 x 51 x 102 mm)



7355 TOWEL BAR-ROUND
 ¾" (19 mm) diameter stainless steel towel bar and stainless steel mounting bracket. Available in 18", 24", and 30" (457, 610, and 762 mm) lengths in bright (-B) and satin (-S) finishes. Extends ¾" (83 mm) from wall.



0755-SS HEAVY-DUTY STAINLESS STEEL TOWEL BAR
 Towel bar fabricated of 1" (25 mm) O.D. x 20 gauge, stainless steel with a satin finish and designed not to turn in support posts. Support posts fabricated of heavy solid cast brass plated to have stainless steel satin finish to match stainless steel. Available in 18", 24", and 30" (457, 610, and 762 mm) lengths.



0760-Z SQUARE TOWEL BAR
 ¾" (19 mm) square 21 gauge triple chrome plated rust-resistant Zamak. Available in 18", 24", and 30" (457, 610, and 762 mm) lengths.
 Fabricated from triple chrome plated rust-resistant Zamak.



0258-SS SURFACE MOUNTED FACIAL TISSUE DISPENSER
 Fabricated of stainless steel with satin finish. Dispenses 300 single-ply or 150 two-ply sheets.

MODEL OPTION:
0259-SS A recessed version of the unit.

Overall Dimensions:
 10¼" x 5⅝" x 2⅞"
 (260 x 135 x 55 mm)



048234 RECESSED MULTI-ROLL TOILET TISSUE DISPENSER
 Holds and dispenses 4 rolls or 1800 sheets of standard toilet tissue.
Unit Size: 17⅞" x 20" x 4¼"
 (441 x 508 x 108 mm)
Wall Opening: 15⅝" x 18⅞" x 4"
 (400 x 467 x 102 mm)



0484-HC PARTITION MOUNTED DUAL ACCESS SEAT COVER AND TOILET TISSUE DISPENSER
 One side mounts flush to partition of barrier-free side to allow for grab bar. Usable by both sides but serviced from one side. Holds 1000 seat covers and 4 rolls of toilet tissue.
MODEL OPTIONS:
0484 Mounts centered through partition.
0485 For end-stall installation.
0486 With stainless steel collar for surface mounting.
Unit Size: 17⅞" x 30⅞" x 4½"
 (441 x 778 x 114 mm)
Partition Opening: 15½" x 28⅞"
 (394 x 733 mm) adjustable for partitions in thickness from ½" to ¾" (13 to 95 mm)



7310-B TOWEL SHELF WITH TOWEL BAR

8" (203 mm) deep consisting of four 3/8" (10 mm) diameter bright finish stainless steel tubes, with 1/4" (6 mm) diameter bright finish stainless steel towel bar below shelf, available in 18" (457 mm) and 24" (610 mm). Overall height: 4 1/4" (110 mm).

MODEL OPTION:

7310-S Towel shelf with satin finish.



7311-B TOWEL SHELF WITH TOWEL BAR

Heavy-duty unit with 3/4" (19 mm) diameter drying rod and 3/8" (10 mm) diameter cross tubes in stainless steel. Bright finish only. Available 20" (508 mm) and 24" (610 mm). Overall height: 6 1/2" (165 mm); projects 8" (203 mm).



0755-Z ROUND TOWEL BAR

Triple chrome plated rust proof Zamak brackets. Triple chrome plated steel tubing 18", 24", and 30" (457, 610, and 762 mm) long.



04813 PARTITION MOUNTED DUAL ACCESS TOILET TISSUE DISPENSER WITH NAPKIN DISPOSAL

Mounts through partition, usable by both sides but serviced from one side. Holds 4 rolls of toilet tissue.

MODEL OPTIONS:

04813-HC One side mounts flush.

04823 Holds two rolls.

04833 With stainless steel collar for surface mounting.

Unit Size:

17 5/8" x 20" x 4 1/4"
(441 x 508 x 108 mm)

Partition Opening:

15 1/2" x 18 1/4"
(394 x 464 mm) adjustable
for partitions in thickness from
1/2" to 2" (13 to 51 mm)



0481 PARTITION MOUNTED DUAL ACCESS SEAT COVER AND TOILET TISSUE DISPENSER WITH SANITARY DISPOSAL

Mounts through partition usable by both sides but serviced from one side. Holds 1000 seat covers and 4 rolls of toilet tissue.

MODEL OPTIONS:

0481-HC One side mounts flush.

0482 For end-stall installation.

0483 With stainless steel collar for surface mounting.

Unit Size:

17 5/8" x 30 5/8" x 4 1/4"
(441 x 778 x 108 mm)

Partition Opening:

15 1/2" x 28 3/8"
(394 x 733 mm) adjustable
for partitions in thickness from
1/2" to 2" (13 to 51 mm)

SHOWN: 74022-H TOILET TISSUE DISPENSER



Toilet Tissue Dispensers

ASI offers many different designs and styles to complement the features of your washroom setting. Engineered for heavy-duty use and easy maintenance, these units stand the test of time.

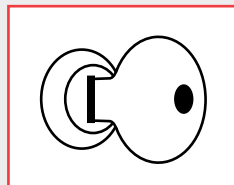
Choose from a wide range of features, based on your own washroom needs. All of these options are easy to install, easy to use, durable, and affordably priced.

WHAT MAKES THESE DISPENSERS UNIQUE?



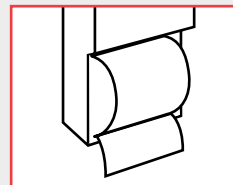
STAINLESS STEEL CONSTRUCTION

Our dispensers are made of stainless steel, which is a tough, durable material that is stain-resistant and easy to clean.



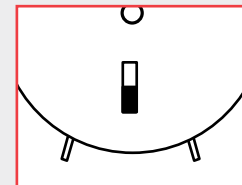
TUMBLER LOCKS

Our tumbler locks provide convenience and security with an elegant look.



SAFE EASY DISPENSING

Dispensing and storage options vary, from single roll to multiple rolls or jumbo roll dispensers.



VIEWING SLOT

Slot in front cover of jumbo roll dispensers provides easy visual indication of remaining tissue supply.

TOILET TISSUE DISPENSERS

FEATURES

- Easy to use and clean
- Spring-loaded chrome roller may apply
- Theft-resistant spindle and vandal-resistant locking device options
- Some models have built-in storage for additional rolls

DIMENSIONS

Unit dimensions vary by model.
See individual product descriptions for details.



9030 PROFILE™ SURFACE MOUNTED DUAL ROLL TOILET TISSUE DISPENSER

Stainless steel cabinet with mechanism for theft-resistant spindles holds 2 rolls up to 5 1/4" (133 mm) diameter (1800 sheets); the top roll automatically drops in place when the bottom roll is used up.

Overall Dimensions:
6" x 12" x 6 1/4"
(152 x 305 x 159 mm)



0030 SURFACE MOUNTED DUAL ROLL TOILET TISSUE DISPENSER

Holds two rolls up to 5 1/4" (133 mm) diameter (1800 sheets). Top roll automatically drops in place when bottom roll is used up. Stainless steel cabinet and mechanism. Theft-resistant spindles.

Unit Size:
6" x 12" x 6 1/2"
(152 x 305 x 165 mm)



0032 PARTITION MOUNTED DUAL ACCESS DUAL ROLL TOILET TISSUE DISPENSER

Serves two toilet compartments by mounting through partition. Dispenses 4 toilet tissue rolls. Adjustable to accommodate partitions from 1/2" to 1 1/4" thick (13 to 32 mm).

Unit Size: 14" x 14 1/8" x 10"
(356 x 359 x 255 mm)

Partition Opening: 12 1/8" x 12 1/4" x 1/2-2 1/2"
(308 x 311 x 13-64 mm)



0031 RECESSED DUAL ROLL TOILET TISSUE DISPENSER


Holds two rolls up to 5 1/4" (133 mm) diameter (1800 sheets). Top roll automatically drops in place when bottom roll is used up. Stainless steel cabinet and mechanism. Theft-resistant spindles. Includes stainless steel flange for recess mounting.

Unit Size: 8" x 14" x 6 1/2"
(203 x 356 x 165 mm)

Wall Opening: 6 1/4" x 12 1/4" x 3 3/8"
(159 x 311 x 86 mm)

TOILET TISSUE DISPENSERS




 **0039 SURFACE MOUNTED LOW PROFILE TWIN 9" JUMBO ROLL TOILET TISSUE DISPENSER**

Holds two 9" (229 mm) diameter rolls of 2¼" or 3" (57 or 76 mm) diameter core. When one roll is depleted, slide panel to expose other roll. Door cabinet and mounting plate fabricated of 18 gauge stainless steel with a satin finish. Door is hung on heavy-duty stainless steel pivot hinges. Equipped with tumbler lock.

Overall Dimensions:
20½" x 11⅜" x 4⅜"
(521 x 284 x 119 mm)



 **0040 SURFACE MOUNTED TWIN 9" JUMBO ROLL TOILET TISSUE DISPENSER**

Holds two 9" (229 mm) diameter rolls of 2¼" or 3" (57 or 76 mm) diameter core. When one roll is depleted, slide panel to expose other roll. Door cabinet and mounting plate fabricated of 18 gauge stainless steel with a satin finish. Two viewing slots reveal toilet tissue rolls inside. Equipped with tumbler lock.

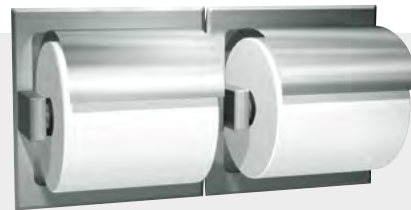
Overall Dimensions:
20⅜" x 11⅜" x 6⅞"
(529 x 289 x 157 mm)



 **0042 SURFACE MOUNTED JUMBO ROLL TOILET TISSUE DISPENSER**

Holds one roll up to 10" (254 mm) diameter of 1⅝" or 2¼" (41 or 57 mm) diameter core. Outer cabinet is stainless steel with a satin finish. Unit has viewing slot and tumbler lock.

Overall Dimensions:
10⅝" x 10⅝" x 4½"
(270 x 270 x 114 mm)



 **74022-H RECESSED DOUBLE TOILET TISSUE HOLDER WITH HOOD**

Recessed dual roll toilet paper holder with hood is fabricated of stainless steel. Rollers are made of chrome plated ABS and spring-loaded.

MODEL OPTIONS:
74022 Same as 74022-H but without hood.
7402 Single roll unit.
7402-H Single roll unit with hood.

Overall Dimensions:
12⅝" x 6⅝"
(320 x 160 mm)



0263-1 SURFACE MOUNTED SINGLE ROLL TOILET TISSUE DISPENSER

Single roll toilet tissue dispenser with controlled-delivery spindle. Holds and dispenses all standard core roll tissue up to 6" (152 mm) diameter. Fabricated of heavy-duty aluminum casting with satin-matte, silver-grey powder coated finish.

MODEL OPTION:

0264-1 Double roll toilet tissue dispenser.

Overall Dimensions:

6½" x 1¾" x 4"
(165 x 45 x 102 mm)



0267 VANDAL-RESISTANT HOOD

14 gauge satin finish stainless steel for use only with 0264-1 (specified and purchased separately).

Unit Size:

14½" x 7¾" x 6½"
(359 x 197 x 175 mm)



0697-GAL SURFACE MOUNTED STAINLESS STEEL SHELF AND DOUBLE TOILET TISSUE HOLDER

Shelf, 18 gauge stainless steel satin finish with front edge hemmed. Holds two 1500 sheet toilet tissue rolls.

Overall Dimensions:

18" x 4¹³/₁₆" x 5"
(457 x 106 x 127 mm)



7305-B* SURFACE MOUNTED TOILET TISSUE HOLDER

Bright finish stainless steel with chrome plated roller. Heavy gauge concealed bracket mounts on wall. Holds standard core roll.

MODEL OPTIONS:

7305-S Satin finish stainless steel.

7305-2S/2B Holds 2 rolls.

7305-S/B Overall Dimensions:

7¾" x 2 x 3⅞" (207 x 51 x 98 mm)

7305-2S/2B Overall Dimensions:

13½" x 2 x 3⅞" (343 x 51 x 98 mm)

*For theft-resistant spindle add R-009 after model number.



0715 SURFACE MOUNTED DOUBLE TOILET TISSUE HOLDER CHROME PLATED STEEL

Provided with vandal-resistant locking device and mechanism to provide controlled delivery. High polish finish. Dispenses two standard or 1800 sheet toilet tissue rolls.

Overall Dimensions:

12¾" x 2¾" x 4¼"
(314 x 70 x 108 mm)

0710 SURFACE MOUNTED SINGLE TOILET TISSUE HOLDER

Overall Dimensions:

6" x 2¾" x 4¼"
(152 x 70 x 108 mm)



7403 RECESSED EXTRA ROLL TOILET TISSUE HOLDER

Spring-loaded chrome roller. Extra roll stored behind roll in use.

MODEL OPTIONS:

7403-B Rec., bright stainless steel.

7403-S Rec., satin stainless steel.

NOTE: If drywall installation is required, add suffix "D" to model number. If wetwall installation is required, add suffix "W" to model number (no clamp is required for wetwall).

Overall Dimensions:

6⁵/₁₆" x 6¼"
(160 x 159 mm)

TOILET TISSUE DISPENSERS



0402-Z RECESSED SINGLE TOILET TISSUE HOLDER

Holds any standard core roll tissue up to 5" (127 mm) diameter. Die-cast of Zamak in seamless one-piece construction.

Wall Opening:
5¹/₄" x 5¹/₄" x 2"
(133 x 133 x 51 mm)



0477-SM SURFACE MOUNTED TOILET SEAT COVER DISPENSER

Dispenses 250 single or half-fold seat covers. Fabricated of 22 gauge stainless steel with satin finish.

Overall Dimensions:
15³/₄" x 11" x 1¹/₄"
(400 x 279 x 32 mm)

0477 RECESSED TOILET SEAT COVER DISPENSER

Door has tumbler lock, dispenses 500 single or half-fold seat covers.

Unit Size: 17¹/₄" x 12³/₄" x 2³/₈"
(438 x 324 x 60 mm) **Wall Opening:** 15³/₄" x 11¹/₄" x 2⁵/₈"
(400 x 285 x 67 mm)



20477-SM ROVAL™ SURFACE MOUNTED SEAT COVER DISPENSER

Dispenses 250 seat covers. Fabricated of 20 gauge stainless steel with a satin finish.

Overall Dimensions:
15³/₄" x 11" x 2³/₈"
(400 x 280 x 60 mm)



0705-Z SURFACE MOUNTED TOILET TISSUE HOLDER

Fabricated from triple chrome plated rust-resistant Zamak. Dispenses one standard core roll tissue up to 5" (127 mm).

Overall Dimensions:
5⁷/₈" x 1⁷/₁₆" x 2³/₄"
(149 x 37 x 70 mm)



7303 EXTRA ROLL TOILET TISSUE HOLDER

Extra roll of toilet tissue is placed over the horn type holder. Stainless steel set screw on bottom of flange locks unit to mounting plate.



R-009 THEFT-RESISTANT SPINDLE

Note: R009 Theft-resistant spindle is available for any toilet tissue holder indicated with an asterisk, by adding R009 suffix after model number.



Grab Bars

All ASI grab bars are made in compliance with ADA guidelines for strength requirements. Various configurations feature satin finish 18 gauge type 304 stainless steel (peened or smooth). These single structure units are heliarc welded, and mandrel bending ensures uniform bar diameters.

SHOWN: 3700 SNAP FLANGE



EXPOSED MOUNTING

3400 Series — 1¼" (32 mm) O.D.
3500 Series — 1½" (38 mm) O.D.

Features include flange of 3" (76 mm) diameter, ⅛" (3 mm) thick type 304 stainless steel with a satin finish; exposed mounting screw holes are drilled and countersunk.



SNAP FLANGE

3700 Series — 1¼" (32 mm) O.D.
3800 Series — 1½" (38 mm) O.D.

Features include cover that snaps over mounting flange dimples to conceal screws and concealed mounting flange of 3⅞" (79 mm) O.D. diameter with 2 screw holes and 3 locking dimples; ⅛" (3 mm) thick, type 304 stainless steel. Cover is type 304 stainless steel with a satin finish and 22 gauge, 3⅞" (81 mm) diameter.

MODEL OPTIONS:

3700-W White grab bar.
3800-W White grab bar.



NEW

ANTIMICROBIAL GRAB BAR WITH SNAP FLANGE

3800-AW Series — 1½" (38 mm) O.D.

ASI's Germ Guard™ grab bars are designed to suppress the growth of mold, bacteria, fungus, algae, mildew, and yeasts. They are made from stainless steel and are finished with an electrostatically applied powder coating. This powder coating is custom formulated to incorporate slow release silver ions (Ag+), the most powerful and long lasting natural antimicrobial agent known.

MODEL OPTIONS:

3801-18AW 18"
3801-24AW 24"
3801-36AW 36"

3801-42AW 42"
3801-48AW 48"
3802-48AW 48"
 (*with intermediate support)



GRAB BAR CONFIGURATIONS

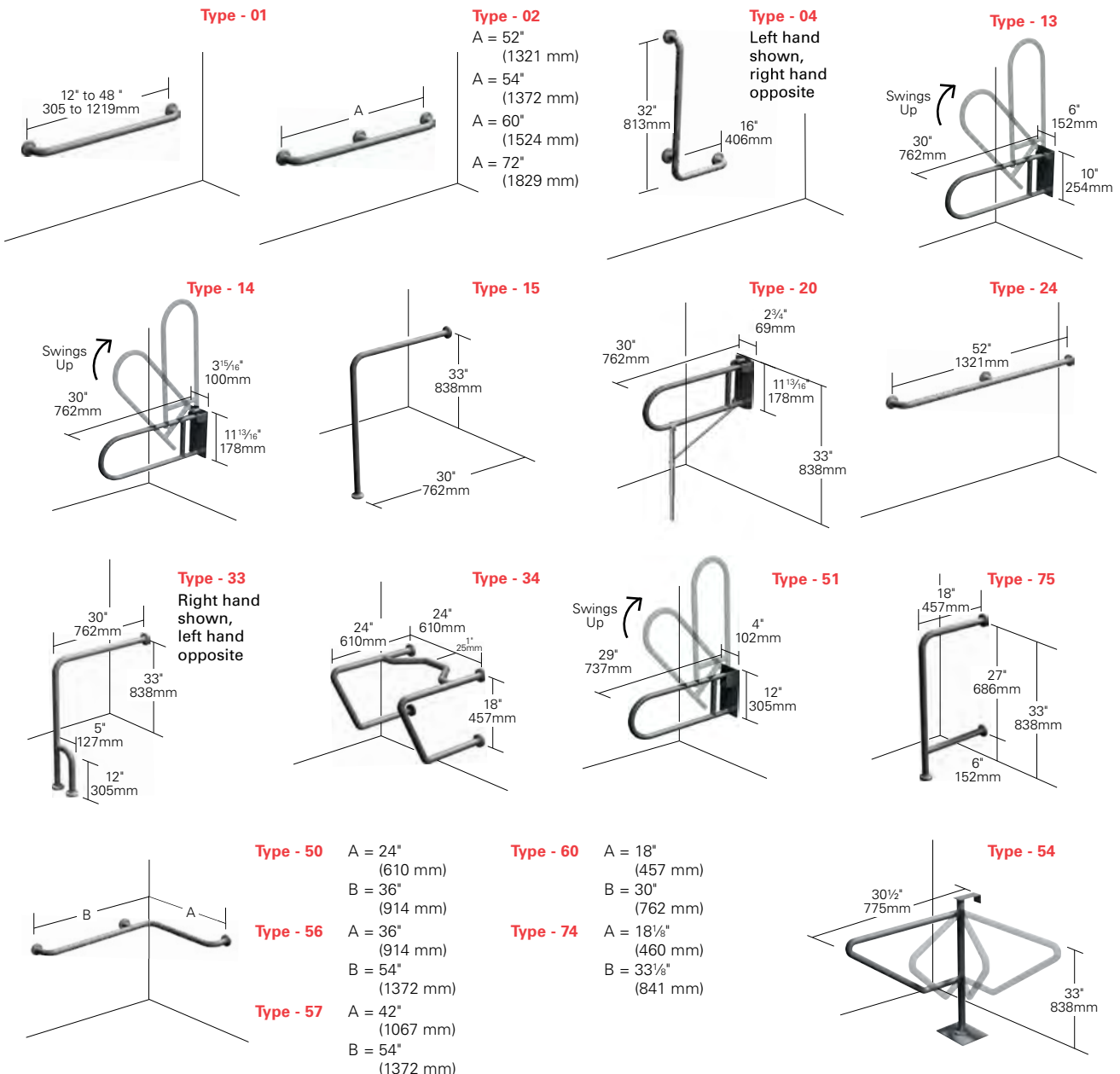
The following standard shapes are typical configurations. Grab bars can be custom designed and manufactured to meet any specific architectural requirement.

Designers Note:

For a non-slip surface, specify suffix "P" (peened). When specifying grab bars insert the configuration type numbers listed below into the double zeros at the end of the grab bar series number.

Example 1: A 1½" (38 mm) concealed 18" x 33" (460 x 840 mm) horizontal grab bar has a model number — 3874. When a special size is needed add suffix "M" plus the size, to the closest standard bars.

Example 2: A 1½" (38 mm) concealed 23" x 37" (585 x 940 mm) horizontal grab bar has a model number 3874-M2337.





Shower/Tub Accessories

ASI provides a full range of shower and tub accessories that show attention to details to address the safety and comfort needs of users. All items—including shower seats and benches, tub seats, soap dishes, and shower curtain rods—are designed to ensure secure installation and easy use.

SHOWN: 1201-A CURVED SHOWER CURTAIN ROD WITH MOUNTING BRACKETS



0398 RECESSED HEAVY-DUTY SOAP DISH AND BAR

Stainless steel unit with bright polished finish exterior and sand blasted finish interior. Includes mounting clamp for stud walls.

Overall Dimensions: 7¹/₈" x 5" x 4"
(181 x 127 x 102 mm) **Wall Opening:** 6¹/₈" x 4¹/₈" x 4"
(156 x 105 x 102 mm)

MODEL OPTIONS:

0399 Same as 0398, but includes kit for installing in cement wall.

0400 Without bar.

0401 Same as 0400, but includes kit for installing in cement wall.



0410-Z RECESSED SOAP DISH WITH BAR

Die-cast of Zamak in seamless one-piece construction. A plastic soap tray with drying ribs interlocks with housing for retention.

Overall Dimensions: 6¹/₄" x 6¹/₄" x 3³/₈"
(181 x 127 x 86 mm) **Wall Opening:** 5¹/₄" x 5¹/₄" x 2"
(133 x 133 x 51 mm)



7404-S RECESSED SOAP DISH

Seamless one-piece construction fabricated of 22 gauge stainless steel with satin finish. Provided with a raised lip to retain soap.

MODEL OPTION:

7404-B Bright stainless steel.

Overall Dimensions:

6¼" x 6⅝" x 2"
(159 x 160 x 51 mm)

Wall Opening:

5½" x 5½" x 2"
(140 x 140 x 51 mm)



7410-B RECESSED SOAP DISH AND BAR

One-piece construction soap dish fabricated of 22 gauge stainless steel with bright finish. Includes a bar, held permanently between two posts at top of unit.

MODEL OPTION:

7410-S Satin stainless steel.

Overall Dimensions:

6⅝" x 6¼" x 3"
(160 x 159 x 76 mm)

Wall Opening:

5½" x 5½" x 2"
(140 x 140 x 51 mm)



1204 EXTRA HEAVY-DUTY SHOWER CURTAIN ROD

3⅜" (81 mm) diameter flanges of 20 gauge type 304 stainless steel with satin finish and 1¼" (32 mm) diameter rod of 18 gauge type 304 stainless steel tubing with satin finish. Available in lengths up to 96" (2438 mm); special order on longer lengths.

MODEL OPTION:

1214 20 gauge, 1" (25 mm) diameter rod. Available in lengths up to 72" (1829 mm).



1201-A CURVED SHOWER CURTAIN ROD WITH MOUNTING BRACKETS

Fabricated of type 304 stainless steel. Tubing is 18 gauge, 1" DIA (25 mm) with a satin finish. Length is suitable for a 60" (1524 mm) wide enclosure either on opposite walls (-B) or across the face opening (-A) depending upon rod length chosen.

MODEL OPTION:

1201-B Curved shower curtain rod with mounting brackets for opposite walls.



1224 CONCEALED MOUNTING SHOWER CURTAIN ROD

Chrome plated brass with satin finish flanges and 1" (25 mm) diameter rod of 20 gauge type 304 stainless steel with satin finish. One flange has set screw to lock rod and prevent rotation. Available in lengths up to 72" (1829 mm); for longer lengths, specify 1204.



1200-SHU SHOWER CURTAIN HOOK

Stainless steel hook for rods 1" (25 mm) and 1¼" (32 mm) diameter.

Overall Dimensions:
1⁹/₁₆" x 2⁵/₈"
(40 x 67 mm)



1200-V VINYL SHOWER CURTAIN

Flame-resistant, anti-bacterial, 8 gauge white vinyl fabric with standard height of 72" (1829 mm). Curtain should be 6" (152 mm) wider than opening up to 42" (1067 mm) and 12" (305 mm) wider than opening exceeding 42" (1067 mm).



8203 COMPACT FOLDING SEAT

⁵/₁₆" (8 mm) thick, one-piece, solid, white colored, black core phenolic seat. Frame, support legs, flanges, and bracket are satin finish stainless steel. Features a self-locking mechanism. Meets ADA Accessibility Guidelines and the needs of the physically disabled and elderly when properly installed. Seat measures 18" (457 mm) wide and projects 16" (406 mm) from wall. Additional width options are available in 20", 28", and 33" (order with suffix -20, -28, and -33).

MODEL OPTIONS:

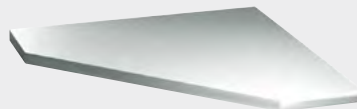
8204 Seat is sponge cushion covered with off-white Naugahyde® mounted on ½" (13 mm) thick marine grade plywood.
8207 Seat is fabricated of stainless steel, satin finish, slatted design.



8208-R FOLDING SHOWER SEAT

(Right hand) slats are fabricated with stainless steel in satin finish. Requires only one hand operation to manually lower to horizontal position for use or raise for departure and arrival. Guide bracket with spring detent prevents seat from dropping and provides positive support in usage position as well as spring locked storage position. Meets ADA Accessibility Guidelines and the needs of the physically disabled and elderly when properly installed. Seat measures 33" (838 mm) wide and projects 23" (584 mm) from wall.

MODEL OPTION:
8208-L Left hand seat.



0010 CORNER SHOWER SEAT

Seat, support brackets and retainer clip are satin finish stainless steel. Seat is secured to one wall with full length piano hinge and support on other wall by bracket. Meets ADA Accessibility Guidelines and the needs of the physically disabled and elderly when properly installed.

Overall Dimensions:
15³/₄" x 15³/₄"
(400 x 400 mm)



8358 FOLDING TUB SEAT

½" (13 mm) thick, solid, white colored, black core phenolic seat. Frame, mounting bracket, and retainer hook are satin finish stainless steel. Meets ADA Accessibility Guidelines and the needs of the physically disabled and elderly when properly installed. Seat measures 15" (387 mm) wide and projects 33³/₄" (860 mm) from wall.



8206-L FOLDING SHOWER SEAT

(Left Hand) Meets ADA Accessibility Guidelines and the needs of the physically disabled and elderly when properly installed. Seat is 1/2" (13 mm) thick, one-piece, solid, white colored, black core phenolic. Frame, support legs, flanges, and bracket are satin finish stainless steel. Phenolic seat ONLY is field reversible. Seat measures 33" (838 mm) wide and projects 22 7/8" (581 mm) from wall.

MODEL OPTIONS:

- 8206-R** Right hand seat.
- 8205-L** Left hand seat with cushion covered in off-white Naugahyde.
- 8205-R** Right hand seat with cushion covered in off-white Naugahyde.



NEW

8206-SC-L SLOW CLOSE FOLDING SHOWER SEAT

Slow Close Phenolic L-Shaped Fold Up Shower Seat provides added safety and ease of use. Gas charged struts assist one handed opening by allowing the slowly lowering seat to its operating position and also assists in partial closing. (Left Hand) Meets ADA Accessibility Guidelines and the needs of the physically disabled and elderly when properly installed. Seat is 1/2" (13 mm) thick, one-piece, solid, white colored, black core phenolic. Frame, support legs, flanges, and bracket are satin finish stainless steel. Phenolic seat ONLY is field reversible. Seat measures 33" (838 mm) wide and projects 22 7/8" (581 mm) from wall.

MODEL OPTION:

- 8206-SC-R** Right hand seat.



8209 RECTANGULAR PHENOLIC FOUR-LEG FOLD-UP SHOWER BENCH

Seat is 1/2" (13mm) thick solid phenolic, with white top and bottom surfaces, and black edges. Frame, mounting bracket, and retainer hook are satin finish stainless steel. Meets ADA Accessibility Guidelines and the needs of the physically disabled and elderly when properly installed. Seat is 22 1/2" (572 mm) deep and 48" (1219 mm) wide, projecting 24" (610 mm) from the wall when in the open position. When retracted, legs fold up to provide low profile against wall.



8202 L-SHAPED PHENOLIC FOUR-LEG FOLD-UP SHOWER SEAT

Seat is 1/2" (13mm) thick solid phenolic, with white top and bottom surfaces, and black edges, and is field reversible for left or right hand. Rear load feet remain on floor with rear frame mounted to wall and never need adjustment after correct installation. Front legs fold up automatically when seat is raised. Gravity prevents seat from dropping. Seat measures 33 1/2" (851 mm) wide and projects 15 1/2" (395 mm) from wall. Meets ADA Accessibility Guidelines and the needs of the physically disabled and elderly when properly installed.

SHOWN: 9013 BABY CHANGING STATION



Baby Changing Stations

ASI offers baby safe solutions for baby changing stations. All units are easy to install, durable, and sanitary. To meet your washroom needs, we offer numerous choices along with many ADA-compliant models.

WHAT MAKES OUR BABY CHANGING STATIONS UNIQUE?



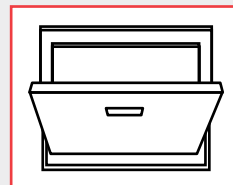
LARGE WEIGHT CAPACITY

Our baby changing stations have been tested using ASTM F2285-04 and EN 12221-1 protocol for a static load and in addition have been tested to hold a weight in excess of 350 lbs.



ADA ACCESSIBILITY STANDARD COMPLIANT

Our units are engineered to comply with the standards set forth by the American Disabilities Act for accessibility and safety.



EASY OPEN AND CLOSE

Our units are designed for easy one-handed operation and shaped to safely cradle a child's body.



FUNGUS- AND BACTERIA-RESISTANT PLASTIC

Our baby changing stations are made with FDA-approved fungus- and bacteria-resistant plastic.

BABY CHANGING STATIONS

FEATURES

- Easy to install
- Sanitary, safe and strong
- All units fold up; no obstruction when not in use
- Easy to clean

DIMENSIONS

Unit dimensions vary by model.
See individual product descriptions for details.



9014 SURFACE MOUNTED HORIZONTAL PLASTIC BABY CHANGING STATION

This horizontal unit has a pull handle and concealed damped gas spring, assisting in easy operation. Fabricated of FDA-approved fungus- and bacteria-resistant plastic. Unit supports a static load of 300 lbs. (136 kg). Its vinyl-coated, adjustable safety strap assures child protection.

Overall Dimensions:

Closed:	Open:
35 ⁵ / ₃₂ " x 24 ¹ / ₄ " x 3 ⁷ / ₁₆ "	35 ⁵ / ₃₂ " x 24 ¹ / ₄ " x 22 ¹ / ₃₂ "
(893 x 616 x 98 mm)	(893 x 616 x 560 mm)



9015 SURFACE MOUNTED VERTICAL PLASTIC BABY CHANGING STATION

This vertical unit has a pull handle and concealed damped gas spring, assisting in easy operation. Fabricated of FDA-approved fungus- and bacteria-resistant plastic. Unit supports a static load of 300 lbs. (136 kg). Its vinyl-coated, adjustable safety strap assures child protection.

Overall Dimensions:

Closed:	Open:
24 ¹ / ₄ " x 35 ⁵ / ₃₂ " x 3 ⁷ / ₁₆ "	24 ¹ / ₄ " x 35 ⁵ / ₃₂ " x 32 ¹⁵ / ₁₆ "
(616 x 893 x 98 mm)	(616 x 893 x 837 mm)



9018 RECESSED HORIZONTAL STAINLESS STEEL BABY CHANGING STATION

Unit shall support a static load of 300 lbs. (136 kg) and be tested in excess of 350 lbs. (159 kg). Fabricated of FDA-approved fungus- and bacteria-resistant plastic. Door facing and collar fabricated of stainless steel.

MODEL OPTION:

9018-9 Surface mounted with 9" stainless steel collar.

Overall Dimensions:

Closed:	Open:
39 ⁹ / ₃₂ " x 28 ¹ / ₄ " x 3 ⁵ / ₁₆ "	39 ⁹ / ₃₂ " x 28 ¹ / ₄ " x 18 ¹ / ₁₆ "
(995 x 718 x 10 mm)	(995 x 718 x 460 mm)

Wall Opening:

35¹/₂" x 24¹/₂" x 4" min (902 x 622 x 102 mm)



9017 RECESSED VERTICAL STAINLESS STEEL BABY CHANGING STATION

This vertical station has a door facing and collar made from 18 gauge stainless steel. Fabricated of FDA-approved fungus- and bacteria-resistant plastic. Unit shall support a static load of 300 lbs. (136 kg) and be tested in excess of 350 lbs. (159 kg).

MODEL OPTION:

9017-9 Surface mounted with 9" stainless steel collar.

Overall Dimensions:

Closed:	Open:
28 ¹ / ₄ " x 39 ⁹ / ₃₂ " x 3 ⁵ / ₁₆ "	28 ¹ / ₄ " x 39 ⁹ / ₃₂ " x 29 ³ / ₁₆ "
(718 x 994 x 10 mm)	(718 x 994 x 746 mm)

Wall Opening:

24¹/₂" x 35¹/₂" x 4" min (622 x 902 x 102 mm)



9012 SURFACE MOUNTED PLASTIC BABY CHANGING STATION

Modern styling and easy-to-clean surface is fabricated of FDA-approved fungus- and bacteria-resistant plastic. Easy opening/closing pneumatic mechanism has oversized hinge and safety stop system. The built-in dispenser for towels or sanitary liners, hooks for diaper bag and purse, plus multi-lingual instructions add friendliness and convenience. Unit shall support a static load of 300 lbs. (136 kg). Surface mounted. Only 4" (102 mm) deep when closed.

Overall Dimensions:

Closed:	Open:
36" x 22" x 4"	36" x 22" x 20 ¹ / ₁₆ "
(914 x 559 x 102 mm)	(914 x 559 x 519 mm)



9013 RECESSED STAINLESS STEEL BABY CHANGING STATION

ADA-compliant unit features welded stainless steel for long and reliable use. Exposed surfaces are satin finish. Easy one-handed operation is assisted by a pull handle and concealed spring. The changing surface is high-impact, fungus-, and bacteria-resistant plastic for easy cleaning. Its two part adjustable safety strap and 400 lb. (181 kg) load capacity assure child protection.

MODEL OPTION:

9013-9 Surface mounted with 9" stainless steel collar.

Overall Dimensions:

Open:	Closed:
37" x 25 ¹ / ₂ " x 17 ³ / ₄ "	37" x 25 ¹ / ₂ " x 3 ⁵ / ₁₆ "
(940 x 648 x 451 mm)	(940 x 648 x 10 mm)

Wall Opening:

34¹/₂" x 22³/₄" x 3³/₄" min (870 x 578 x 95 mm)



9020 SURFACE MOUNTED TODDLER SAFETY SEAT

This plastic seat, mounted on the inside of the toilet partition, either on the door or panel, allows a parent to take a toddler into the stall with them. Unit shall support a static load of 50 lbs. (23 kg). Fabricated of FDA approved plastic.

Overall Dimensions:

Closed:	Open:
12 ¹ / ₂ " x 21 ³ / ₄ " x 5 ¹ / ₂ "	12 ¹ / ₂ " x 21 ³ / ₄ " x 11 ¹ / ₈ "
(318 x 552 x 140 mm)	(318 x 552 x 283 mm)



9016 RECESSED BABY CHANGER BED LINER DISPENSER

Holds and dispenses up to 30 paper liners. Fabricated of stainless steel.

Unit Size:

10" x 18" x 4"
(254 x 457 x 101 mm)

Wall Opening:

8¹/₄" x 16¹/₄" x 3³/₄"
(210 x 413 x 95 mm)



Shelves

ASI offers various configurations, sizes, and styles, including platform, recessed, and folding utility shelving—all sturdy, durable, and constructed of stainless steel.

SHOWN: 20692 SURFACE MOUNTED SHELF



0690 SHELF WITH RAISED EDGES

Entire unit is formed of one-piece of 18 gauge stainless steel having a $\frac{3}{8}$ " (10 mm) depression with a satin finish.

See chart for standard sizes.

	Model Numbers			
	0690	0692	0694	20692
Standard Sizes:	6" depth (152 mm)	5", 6" or 8" depth (127,152, 203 mm)	5" depth (127 mm)	6" depth (152 mm)
Length				
12" (305 mm)		■		■
16" (406 mm)		■		
18" (457 mm)	■	■	■	■
24" (610 mm)	■	■	■	■
30" (762 mm)		■		■
36" (914 mm)		■	■	■
48" (1219 mm)		■	■	■
60" (1524 mm)		■	■	■
72" (1829 mm)				■



0692 SURFACE MOUNTED SHELF

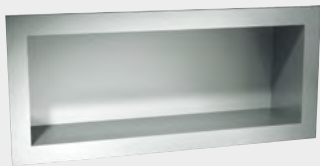
Fabricated of 18 gauge stainless steel with a satin finish. Front edge is hemmed for maximum rigidity and safety. See chart for standard sizes.



0698 FOLDING UTILITY SHELF FOR TOILET COMPARTMENTS

Fabricated of 18 gauge satin finish stainless steel with raised rim. Shelf automatically returns to upright position when not in use.

Overall Dimensions:
14³/₈" x 5¹/₁₆"
(371 x 148 mm)



0412 RECESSED SHELF

This unit is fabricated of 22 gauge, all welded construction, stainless steel with a satin finish.

Overall Dimensions:
18" x 8" x 4¹/₄" min
(457 x 203 x 108 mm)

Wall Opening:
16¹/₂" x 6¹/₂" x 4" min
(419 x 165 x 102 mm)



0694 SURFACE MOUNTED SHELF WITH BACKSPLASH

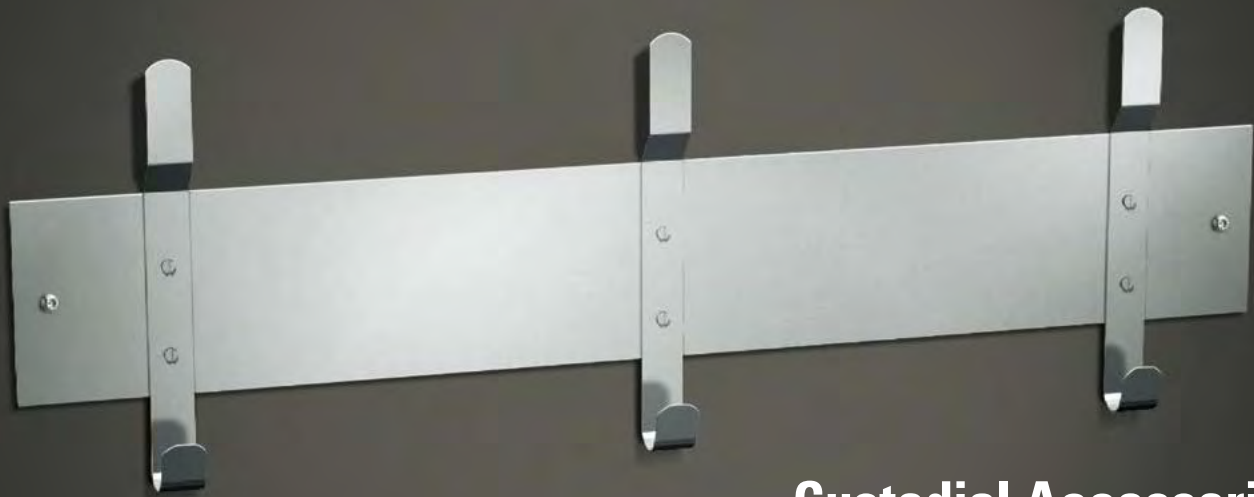
Fabricated of 18 gauge stainless steel with a satin finish on exposed surfaces with 5" (127 mm) depth.



20692 ROVAL™ SURFACE MOUNTED SHELF

Fabricated of 18 gauge stainless steel, the 6" wide shelf has a 3/4" (19 mm) gently radiused edge. Choice of sizes.

Overall Dimensions:
6" x 12"-72"
(152 x 305-1829 mm)



Custodial Accessories

Fabricated of type 304 satin finish stainless steel, our one-piece constructed custodial accessories—with various configurations of mop and broom holders and utility hooks—help keep necessary cleaning tools and supplies organized and accessible.

SHOWN: 1307-3 UTILITY HOOK STRIP WITH 3 HOOKS 26" (660mm)



1307-3 UTILITY HOOK STRIP WITH 3 HOOKS

Fabricated of stainless steel with satin finish, this strip is 4" (102 mm) high with edges returning 1/2" (13 mm) to the wall. Measures 26" (660 mm) long.

MODEL OPTIONS:

- 1307-4** With 4 hooks 36" (914 mm) long.
- 1307-5** With 5 hooks 46" (1168 mm) long.
- 1307-6** With 6 hooks 56" (1422 mm) long.



1308-3 SHELF WITH 4 UTILITY HOOKS AND 3 MOP HOLDERS STRIP

Fabricated of satin finish stainless steel, this shelf is 8" (203 mm) deep with 3/4" (19 mm) return for rigidity. Mop holders are riveted to strip, and rubber cam is ribbed for grasping. Unit is 14 1/2" (368 mm) high. Measures 34" (860 mm) long.

MODEL OPTION:

- 1308-4** 4 mop holders/5 utility hooks, 44" (1118 mm) long.



1306 HEAVY-DUTY UTILITY HOOK

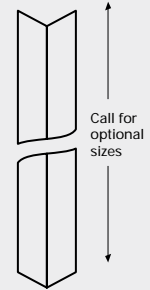
Heavy-duty 14 gauge stainless steel with satin finish.



0533-48 CORNER GUARD

Surface Mounted Corner Guard comes in multiple sizes and mounting options. Robust 18 gauge stainless steel protects corners and is finished with a 1/8" radius outside edge. Guard can be mounted flush to floor or at base height. Ideal for a variety of applications. Standard mounting is with adhesive. Optional screw mounting available on request.

Overall Dimensions:
48" x 4 1/4" x 4 1/4"
(1219 x 108 x 108 mm)



Suffix	Material
1	SM Corner Guard with Beveled Edge Legs
2	SM Corner Guard with Mounting Holes & Beveled Edge Legs
3	SM Corner Guard with Flat Edge Legs
4	SM Corner Guard with Mounting Holes & Flat Edge Legs



8215-5 MOP AND BROOM RACKS

5 holders, 46" (1168 mm) long. Fabricated from one-piece hi-hat channel stainless steel.

MODEL OPTIONS:

- 8215-3** 3 holders, 26" (660 mm) long.
- 8215-4** 4 holders, 36" (914 mm) long.



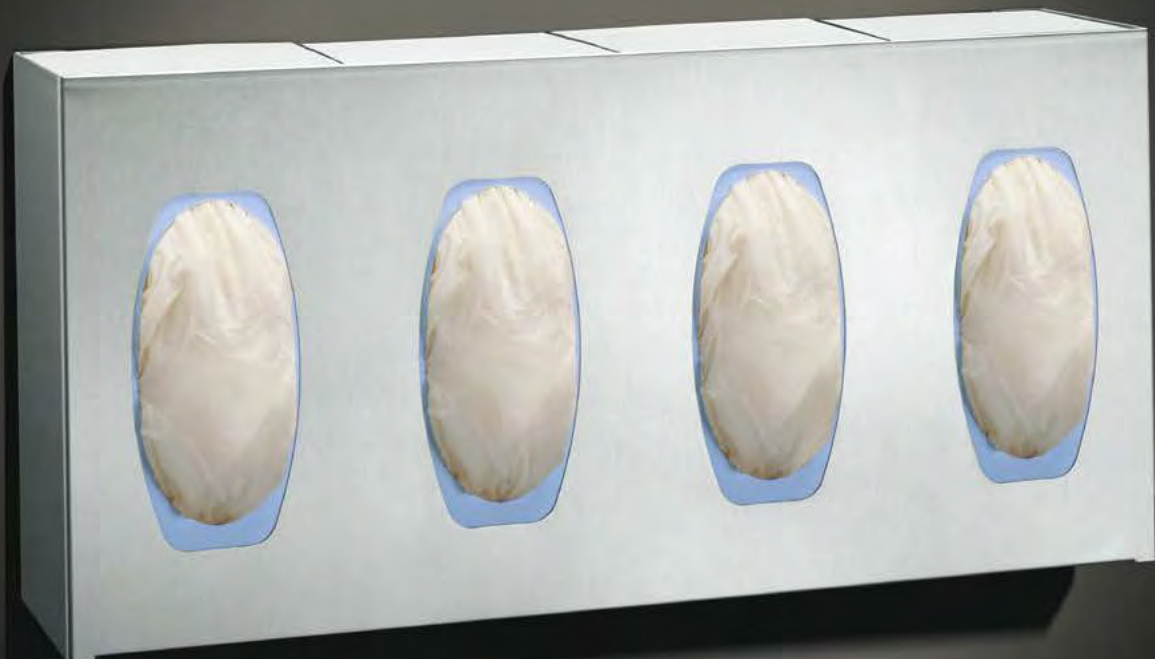
**1315-4 UTILITY SHELF WITH DRYING ROD,
4 MOP HOLDERS AND 3 RAG HOOKS**

Fabricated of satin finish stainless steel, this shelf is 8" (203 mm) deep with 3/4" (19 mm) return for rigidity. Mop holders are riveted to strip, and rubber cam is ribbed for grasping. Rod and hooks for wet rags are included. Measures 36" (914 mm) long.

MODEL OPTIONS:

- 1315-3** 3 mop holders/2 rag hooks, 30" (762 mm) long.
- 1315-6** 6 mop holders/5 rag hooks, 48" (1219 mm) long.

SHOWN: 0501-4 SURFACE MOUNTED FOOT OPERATED
SURGICAL SOAP SURGICAL GLOVE DISPENSER

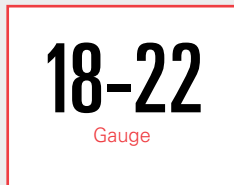


Healthcare Accessories

ASI offers many different items that are specifically designed for healthcare settings. All of these items contribute to providing an organized and hygienic environment for patients and caregivers. From innovative products like new antimicrobial

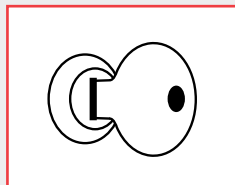
grab bars and a slow close shower seat, to glove dispensers, security cabinets, and hazardous waste disposals—ASI healthcare accessories are designed for ease of use, safety, durability, and peace of mind.

WHAT MAKES OUR HEALTHCARE ACCESSORIES UNIQUE?



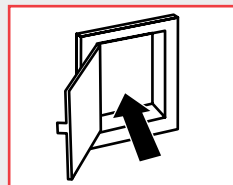
STAINLESS STEEL CONSTRUCTION

Our cabinets are made of stainless steel, which is tough, durable, stain-resistant and easy to clean.



TUMBLER LOCK

The design of our products with tumbler locks allows for the removal of internal components for sterilizing or autoclaving when necessary.



CONVENIENT PASSAGE

Our specimen pass box and cabinet enables easy access and safe handling of specimens from patient area to laboratory.



ADJUSTABLE SHELVES

The design of our cabinets offers flexibility with adjustable shelves for ease in storage and use.

HEALTHCARE ACCESSORIES

FEATURES

- Easy to install
- Hygienic and safe to use
- Durable
- Easy to clean

DIMENSIONS

Unit dimensions vary by model.
See individual product descriptions for details.



0952 RECESSED STAINLESS STEEL MEDICINE CABINET

Swing door mirror frame is stainless steel with satin finish. Mirror is 1/4" (6 mm), guaranteed for 15 years against silver spoilage. Door has full length piano hinge and magnetic catch. Three removable stainless steel shelves.

Overall Dimensions:
18 1/4" x 24 1/4" x 4 1/2"
(464 x 616 x 114 mm)

Wall Opening:
16" x 22 3/4" x 3 1/2"
(406 x 578 x 89 mm)

MODEL OPTION:
0952-B Larger than 0952.

Overall Dimensions:
24" x 26" x 4 7/8"
(610 x 660 x 124 mm)

Wall Opening:
21 3/4" x 24 1/2" x 3 1/2"
(550 x 620 x 89 mm)



0953 SURFACE MOUNTED STAINLESS STEEL MEDICINE CABINET

Surface mounted cabinet is made from 20 gauge stainless steel with a satin finish. Mirrored door is hung on cabinet with a full length 3/16" staked piano hinge. Cabinet has three adjustable stainless steel shelves.

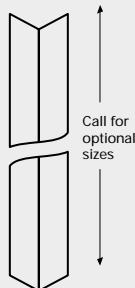
Overall Dimensions:
18 1/4" x 24 1/4" x 4 3/4"
(464 x 616 x 121 mm)



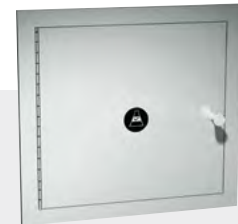
0533-48 CORNER GUARD

Surface Mounted Corner Guard comes in multiple sizes and mounting options. Robust 18 gauge stainless steel protects corners and is finished with a 1/8" radius outside edge. Guard can be mounted flush to floor or at base height. Ideal for a variety of applications.

Overall Dimensions:
48" x 4 1/4" x 4 1/4"
(1219 x 108 x 108 mm)



Suffix	Material
1	SM Corner Guard with Beveled Edge Legs
2	SM Corner Guard with Mounting Holes & Beveled Edge Legs
3	SM Corner Guard with Flat Edge Legs
4	SM Corner Guard with Mounting Holes & Flat Edge Legs



8154 RECESSED PASS-THROUGH SPECIMEN CABINET

Provides a convenient passage from patient area into laboratory. Fabricated of 18 gauge satin finish stainless steel. Internal latch prevents simultaneous door opening. Stainless steel tray is removable. Mounts in wall thickness of 1 3/4" to 5 1/2" (44 to 140 mm).

MODEL OPTIONS:

8155 Extension sleeve and flange for recessed specimen pass-through cabinet.

8156 Same as 8154 including 8155 extension sleeve.



8340 RECESSED POWDER COATED MEDICINE CABINET

One-piece, drawn cold rolled steel with white powder coated steel finish. Stainless steel channel framed mirrored door with 1/4" (6 mm) thick plate glass, has continuous piano hinge and magnetic catch. Three removable white enamel steel shelves.

Overall Dimensions:
18 1/4" x 24 1/4" x 4 7/8"
(465 x 615 x 120 mm)

Wall Opening:
16" x 22 3/4" x 3 1/2"
(406 x 578 x 89 mm)

MODEL OPTIONS:

8338 Smaller and has two adjustable white baked enamel steel shelves.
14 1/8" x 20 3/16" x 5"
(359 x 513 x 125 mm)

8339 Larger than 8338.
16 3/16" x 22 3/16" x 5"
(411 x 564 x 127 mm)



0546 SECURITY MEDICINE CABINET

Stainless steel satin finish shelves are 20 gauge with hemmed edges and are easily adjusted by owner using track clips provided. Two (2) shelves and eight (8) clips are provided.

Overall Dimensions:
30" x 30" x 12"
(762 x 762 x 305 mm)



0547 NARCOTICS CABINET - COMBINATION LOCK/ DUAL DOORS

Security cabinet for controlled narcotic substances is surface mounted and constructed from stainless steel with double wall all welded construction. Cabinet is 22 gauge and doors are 18 gauge.

Overall Dimensions:
11 1/4" x 15" x 8 1/4"
(286 x 381 x 210 mm)



0350 SURGICAL SOAP DISPENSER

Dispenses liquid antiseptic solutions and synthetic detergent soaps. Chrome plated brass body. Capacity: 16 oz. (0.5 L) white polyethylene globe.

Overall Dimensions:
3 3/8" x 6 1/2" x 5 1/8"
(86 x 165 x 130 mm)



0349 FOOT OPERATED SURGICAL SOAP DISPENSER

Pneumatic pump mechanism, 32 oz. (0.9 L) polyethylene container. Free turning spout is type 316 stainless steel. 96" (2438 mm) long vinyl tubing attaches to anti-slip foot pump. Dispenses liquid surgical soaps, antiseptic solutions and synthetic detergents.

Overall Dimensions:
4 1/4" x 12 3/4" x 9"
(108 x 324 x 229 mm)

Spout Projection: 9" (229 mm) from wall



0815 FLOOR STANDING FOOT OPERATED WASTE RECEPTACLE

Foot operated waste receptacle with satin finish stainless steel body and top. Connected with multi-staked piano hinge and features hemmed edges for safety. Capacity: 8 gal. (30.7 L).

Overall Dimensions:
 10³/₄" x 20¹⁵/₁₆" x 10"
 (273 x 531 x 254 mm)



NEW

ANTIMICROBIAL GRAB BAR WITH SNAP FLANGE
3800-AW Series — 1½" (38 mm) O.D.

ASI's Germ Guard™ grab bars are designed to suppress the growth of mold, bacteria, fungus, algae, mildew, and yeasts. They are made from stainless steel and are finished with an electrostatically applied powder coating. This powder coating is custom formulated to incorporate slow release silver ions (Ag+), the most powerful and long lasting natural antimicrobial agent known.

MODEL OPTIONS:

- | | |
|----------------------|------------------------------|
| 3801-18AW 18" | 3801-42AW 42" |
| 3801-24AW 24" | 3801-48AW 48" |
| 3801-36AW 36" | 3802-48AW 48" |
| | (*with intermediate support) |



0548 RECESSED SHARPS DISPOSAL CABINET

Satin finish stainless steel. Marked with graphic label indicating Biohazard. Holds one Becton, Dickinson and Company (BD) brand Sharps Collector model #305443 (not included).

Overall Dimensions: 13 ³ / ₄ " x 19 ¹ / ₁₆ " x 5 ¹ / ₄ " (349 x 486 x 133 mm)	Wall Opening: 12 ¹ / ₈ " x 17 ³ / ₄ " x 5" (308 x 451 x 127 mm)
--	--

MODEL OPTION:
0548-9 Surface mounted unit.



0501-X SURFACE MOUNTED SURGICAL GLOVE DISPENSER

Satin finish stainless steel, holds, and dispenses gloves from one standard surgical glove box. Fully hemmed-in rolled edges for snag-free dispensing and user safety.

MODEL OPTIONS:

- 0501-1** Dispenser for 1 box.
- 0501-2** Dispenser for 2 boxes.
- 0501-3** Dispenser for 3 boxes.
- 0501-4** Dispenser for 4 boxes.



0511 SURFACE MOUNTED BULK DISPENSER, SMALL

Satin finish stainless steel. Dispenses various personal protection equipment such as gloves, caps and shoe covers (not supplied).

Overall Dimensions:
12⁵/₆₄" x 11" x 5¹/₂"
(307 x 279 x 140 mm)

MODEL OPTION:
0512 Large bulk dispenser

Overall Dimensions:
12⁵/₆₄" x 17" x 5¹/₂"
(307 x 431 x 140 mm)



0515 TURNTABLE SPECIMEN PASS BOX

Fabricated of 18 gauge satin finish stainless steel. Turntable cylinder is 12" (305 mm) diameter with 10¹/₂" x 6" (267 x 152 mm) opening. Stainless steel self-lubricating ball bearing plates mounted on top and bottom permit the unit to rotate freely. Positioned bullet catches prevent uncontrolled rotation. Entire inner assembly is encased in 1" (25 mm) wide trim. Cylinder lock allows for the removal of the cylinder for sterilizing or autoclaving when necessary. Trim is adjustable for wall up to 7" (178 mm) thick.



0551 RECESSED BEDPAN AND URINAL BOTTLE CABINET

Recessed cabinet is 22 gauge satin finish stainless steel for storage of bedpan and urinal. Cabinet provided with 1/2" (13 mm) open space across top and bottom of door to allow air circulation.

Overall Dimensions:
15" x 28" x 5¹/₄"
(381 x 711 x 133 mm)

Wall Opening:
13³/₈" x 26¹/₂" x 5³/₈"
(340 x 670 x 140 mm)

MODEL OPTION:
0558-1 Recessed bedpan and wash basin cabinet.



0557 SURFACE MOUNTED BEDPAN RACK

Surface mounted rack provides convenient storage for one conventional sized bedpan.

Overall Dimensions:
12" x 11" x 4⁷/₈"
(305 x 279 x 124 mm)

MODEL OPTIONS:
0556 Surface mounted bedpan and urinal rack.
0559 Surface mounted double bedpan rack. Similar to 0556, but designed to hold two conventional sized bedpans.



0198-MH SAFE-DRI™ MENTAL HEALTH APPROVED RECESSED HIGH-SPEED HAND DRYER

Anti-ligature dryer designed for Behavioral Health environments—angled top, welded corners and single tube exhaust prevent looping, tying off, wedging and prying. Tamper-resistant 18 gauge stainless steel cover, and flush pin-hex security screws. Available in 115-120V and 208-240V.

Unit Size:
12⁵/₆" x 15³/₄" x 5⁴/₁₆"
(320 x 400 x 140 mm)

Wall Opening:
12¹/₄" x 15³/₁₆" x 5¹/₄"
(311 x 386 x 133 mm)

Decibel Level:
66 dB-A @ 2M



SHOWN: 7383 TOWEL SHELF WITH HANGER ROD



Hospitality Accessories

ASI offers a wide range of options to accessorize the washroom setting. These items include towel bars and racks, clothes hooks, shelving and holders. All items are easy to install and easy to clean. These items add a special touch and convenience for washroom users.

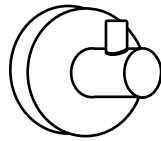
WHAT MAKES OUR HOSPITALITY ACCESSORIES UNIQUE?

304

Stainless Steel

STAINLESS STEEL CONSTRUCTION

Our heavy-duty items are made of high-quality type 304 stainless steel, which is tough, durable, stain-resistant and easy to clean.



MINIMALISTIC, CONTEMPORARY AND CLASSIC

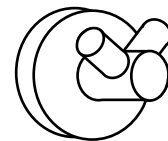
Different styles allow you to choose what works best to complement your washroom.

LEED®

Friendly

LEED®-FRIENDLY

The robust construction made of type 304 stainless steel is LEED®-friendly and fits our sensibility about longer lifecycle building designs.



REFINED LOOK, RICH FUNCTION

These accessories add a special touch to enhance the user's experience in the washroom setting.

HOSPITALITY ACCESSORIES

FEATURES

- Easy to install
- Hygienic and safe to use
- Durable
- Easy to clean



FRAMELESS MIRRORS



STAINLESS STEEL MIRRORS

See our Mirror Collection on page 64.

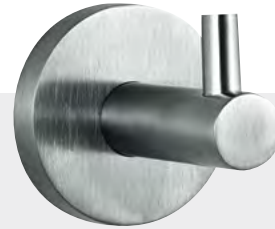


7313 SOAP DISH WITH GLASS HOLDER

Clear glass holder has raised ribs to elevate soap slightly above surface to promote drying. May be removed for cleaning. All other parts of the unit are fabricated of satin finish stainless steel.

Overall Dimensions:

4 $\frac{5}{16}$ " DIA x 4 $\frac{7}{8}$ "
(110 DIA x 124 mm)



7308 SINGLE ROBE HOOK

Extends 2 $\frac{1}{16}$ " (59 mm) from wall or door. Suitable for robes, clothing, or small bags. Satin finish stainless steel hook.



7316 SPARE TOILET PAPER HOLDER

Holds one roll of toilet paper. Extends 4" (102 mm) from wall. All exposed surfaces have a satin finish stainless steel.

Overall Dimensions:

3 $\frac{3}{64}$ " DIA x 6 $\frac{1}{8}$ "
(90 DIA x 167 mm)



7312 DOUBLE ROBE HOOK

Two hooks, set apart at 90° on center, extend 2 $\frac{3}{16}$ " (60 mm) from wall or door. Suitable for robes, clothing, or small bags. Satin finish stainless steel.



7314-H SINGLE TOILET PAPER ROLL HOLDER WITH HOOD

Satin finish stainless steel hood. Hood adds weight for easy tear and also protects paper roll from water droplets.

Overall Dimensions:
 $5\frac{1}{4}'' \times 5'' \times 2\frac{3}{16}''$
 (133 x 127 x 65 mm)



7315-H DOUBLE TOILET PAPER ROLL HOLDER WITH HOOD

Double Toilet Paper Roll Holder with Hood is fabricated of stainless steel. All exposed surfaces have a satin finish. Roll holder bail is retained in post with concealed set screw. Hoods are captive on rod. Post is 22 gauge tubing with formed 18 gauge threaded bracket welded inside end.

Overall Dimensions:
 $12\frac{5}{32}'' \times 3'' \times 5''$
 (309 x 76 x 128 mm)



7314 SINGLE TOILET PAPER ROLL HOLDER

The toilet paper placed on this bail-type holder has unrestricted feed. Its design allows for easy replacement by maintenance or even guests. All exposed surfaces have a satin finish stainless steel. Paper bar is reversible to change handing.

Overall Dimensions:
 $5\frac{3}{16}'' \times 3\frac{3}{16}'' \times 2\frac{3}{16}''$
 (131 x 86 x 56 mm)



7317 COVERED WASTE RECEPTACLE

Freestanding covered garbage can. Lid opens by depressing foot pedal. Plastic pail with wire bail included. Bright finish stainless steel. Capacity: 2 gal. (7.6 L).

MODEL OPTION:
7317-S Satin stainless steel finish.

Overall Dimensions:
 $8\frac{3}{32}''$ DIA x $12\frac{3}{4}''$
 (210 DIA x 324 mm)



7387 SURFACE MOUNTED TOILET BRUSH AND HOLDER

Tube handle, round splash guard, and storage cylinder of this wall-mounted unit are fabricated of satin finish stainless steel. Includes a drip cup at the bottom for easy cleaning. Brush is made of PVC with a polypropylene shaft. 15½" (394 mm) from bottom of base to top of handle and extends 5½" (131 mm) from wall. Allows for easy cleaning while maintaining an elegant washroom.

MODEL OPTION:

7388 Freestanding. 15" (381 mm) from bottom of base to top of handle.



0712 SURFACE-MOUNTED RETRACTABLE CLOTHES LINE

Polished stainless steel unit has spring actuated 72" (1829 mm) vinyl cord with white vinyl knob and locking nut to hold stretched line taut. Installs over bathtub or in shower.

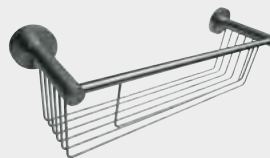


7383 SURFACE MOUNTED TOWEL SHELF WITH HANGER ROD

Heavy-duty unit with ¾" diameter stainless steel tubing. Stainless steel setscrew provided on bottom perimeter of flanges to lock unit to mounting plates.

Overall Dimensions:

23½" x 3½" x 8¹⁵⁄₁₆"
(600 x 89 x 227 mm)

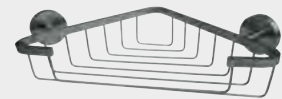


7381 SURFACE MOUNTED SUNDRIES SHELF

Stainless steel formed round wire construction and has ²⁵⁄₆₄" (10 mm) diameter. Solid retainer cross bar as front rim. Satin finish on all visible surfaces. Stainless steel setscrew provided on bottom perimeter of flanges to lock unit to mounting plates.

Overall Dimensions:

12¹⁄₈" x 4¹⁄₁₆" x 3³⁵⁄₆₄"
(372 x 114 x 90 mm)



7322 SURFACE MOUNTED SOAP BASKET

Stainless steel formed round wire construction and fabricated with heavy gauge solid rectangular cross section formed bar top rim. Satin finish on all visible surfaces. Stainless steel setscrew provided on bottom perimeter of flanges to lock unit to mounting plates.

Overall Dimensions:

11¹⁵⁄₃₂" x 2²⁹⁄₃₂" x 6½"
(291 x 58 x 165 mm)



7306 TOWEL RING

Designed for hand towels, this 7" DIA (178 mm) towel ring is formed from a 3/8" DIA (9.5 mm) satin finish stainless steel tube. Extends 2 1/2" (64 mm) from wall.

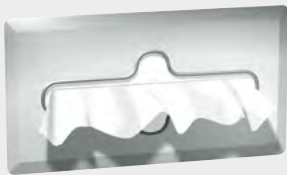


1201-A CURVED SHOWER CURTAIN ROD WITH MOUNTING BRACKETS

Fabricated of type 304 stainless steel. Tubing is 18 gauge, 1" DIA (25 mm) with a satin finish. Length is suitable for a 60" (1524 mm) wide enclosure either on opposite walls (-B) or across the face opening (-A) depending upon rod length chosen.

MODEL OPTION:

1201-B Curved shower curtain rod with mounting brackets for opposite walls.



0259-SS RECESSED FACIAL TISSUE DISPENSER

Dispenses 300 single-ply or 150 double-ply tissues. Faceplate constructed of stainless steel with satin finish.

Overall Dimensions:

11 1/8" x 6 3/8" x 2 1/4"
(302 x 162 x 57 mm)



7307-18 ROUND TOWEL BAR

Satin finish stainless steel tube and posts with round mounting brackets on ends. Extends 2 3/8" (67 mm) from wall. 18" (457 mm) in length.

MODEL OPTION:

7307-24 Same as 7307-18, but 24" (610 mm) in length, 5/8" (16 mm) DIA.



Security Accessories

ASI offers many different items that are specifically designed for settings with high security requirements. Features include design for contraband detection and clothes hooks that release when excessively loaded to deter self-harm actions.

SHOWN: 128-1 BOOK SHELF/CLOTHES HOOK—FRONT MOUNTING



122 SQUARE CLOTHES HOOK—REAR MOUNT

Fabricated of 12 gauge stainless steel with a satin finish. Back plate is fabricated of 14 gauge stainless steel. If hook is excessively loaded, it will snap down for safety. Unit has four studs welded on back for rear mounting.

MODEL OPTION:

123 Front mounted hook.

Overall Dimensions:

4¹/₄" x 4¹/₄" x 2¹/₄"
(108 x 108 x 57 mm)



0198-MH SAFE-DRI™ MENTAL HEALTH APPROVED RECESSED HIGH-SPEED HAND DRYER

Anti-ligature dryer designed for Behavioral Health environments—angled top, welded corners and single tube exhaust prevent looping, tying off, wedging and prying. Tamper-resistant 18 gauge stainless steel cover, and flush pin-hex security screws. Available in 115-120V and 208-240V.

Unit Size:

12⁵/₈" x 15³/₄" x 5⁴/₁₆"
(320 x 400 x 140 mm)

Wall Opening:

12¹/₄" x 15³/₁₆" x 5¹/₄"
(311 x 386 x 133 mm)

Decibel Level:
66 dB-A @ 2M



128-1 BOOK SHELF/CLOTHES HOOK—FRONT MOUNT

Shelf and back plate are 14 gauge stainless steel with satin finish. Hooks are 12 gauge stainless steel and back plate is 14 gauge stainless steel. Seams are welded and ground smooth. Hooks snap down for safety if excessively loaded. Unit has six holes through back for front mounting.

Overall Dimensions:

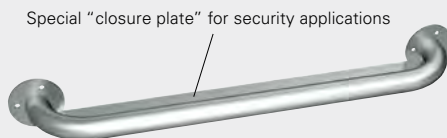
18" x 11" x 8"
(457 x 279 x 203 mm)



120 CLOTHES HOOK—FRONT MOUNT

Bracket 11 gauge, hook 7 gauge stainless steel with satin finish. If hook is excessively loaded, it will snap down for safety. Unit has four holes through flange for front mounting.

Overall Dimensions:
3" x 5" x 3/16"
(76 x 127 x 78 mm)



Special "closure plate" for security applications

165 GRAB BAR

Tubing 18 gauge and flanges 1/8" (3 mm) thick stainless steel with satin finish. Closure plate is 1/8" (3 mm) thick. All welded construction. Unit has three holes through each flange for front mounting.

MODEL OPTIONS:

Rear Mounted	Length	Exposed Mounted	Length
160	24" (610)	159	18" (457)
161	30" (762)	162	30" (762)
163	36" (914)	164	36" (914)
166	42" (1067)	165	24" (610)
168	48" (1219)	167	42" (1067)
		169	48" (1219)



110-1 SQUARE RECESSED TOILET TISSUE HOLDER—REAR MOUNT

Fabricated of 14 gauge stainless steel with satin finish exterior, glass blasted satin finish interior 4 1/2" (114 mm) deep accommodates one standard toilet tissue roll. Flange is 7" (179 mm) square.

MODEL OPTION:
110-13 Front mounted holder.



110 RECESSED TOILET TISSUE HOLDER—REAR MOUNT

Fabricated of 16 gauge stainless steel, satin finish exterior, glass blasted satin finish interior. 4 1/2" (114 mm) interior depth accommodates one standard toilet tissue roll. Hidden contraband causes roll to project from holder allowing detection. Two "T" nuts welded on back for rear mounting.

MODEL OPTION:
110-A 7 1/4" (184 mm) DIA

Overall Dimensions:
7 1/4" (184 mm) DIA



101-14 SECURITY FRAMED MIRROR—CHASE MOUNT

Frame 14 gauge stainless steel with satin finish, corners welded and ground smooth. Unit provided with fiberboard backing and six "T" nuts welded on back for rear mounting. Specify wall thickness if greater than 6" (152 mm). 20 gauge stainless steel with #8 mirror polish.

Overall Dimensions:
 12" x 16" x 5/8"
 (305 x 406 x 16 mm)



104 SECURITY FRAMED MIRROR—FRONT MOUNT

Unit consists of wall mounting plate fabricated of 7 gauge stainless steel with four countersunk mounting holes and eight tapped holes. Formed mirror fabricated of 18 gauge stainless steel with #8 mirror polish finish provided with eight dimpled holes through integral frame and 1/4-20 x 1/4" Torx® head screws for securing to wall mounting plate. For 20 gauge No. 8 mirror polish finish use suffix -14.

Overall Dimensions:
 10 1/16" x 11 1/16" x 7/16"
 (256 x 294 x 11 mm)



105-14 SECURITY FRAMED MIRROR—FRONT MOUNT

Frame 14 gauge stainless steel with satin finish, corners welded and ground smooth. Front mounting furnished with Torx® vandal-resistant 1/4-20" x 2 (150 mm) machine screws. 20 gauge type 304 stainless steel with #8 mirror polish.

Overall Dimensions:
 12" x 16" x 5/8"
 (305 x 406 x 16 mm)



129 CLOTHES/TOWEL HOOK STRIP—FRONT MOUNT

Fabricated of 14 gauge stainless steel with satin finish. Hooks snap down for safety if excessively loaded. Six holes through back for front mounting.

Overall Dimensions:
 18" x 5 1/2" x 2 1/4"
 (457 x 140 x 57 mm)



127 CLOTHES/TOWEL HOOK STRIP—FRONT MOUNT

Wall plate 14 gauge with beveled edges, 11 gauge brackets and four 7 gauge hooks. Stainless steel with satin finish. Hooks snap down for safety if excessively loaded. Unit has six mounting holes through back for front mounting.

Overall Dimensions:
18" x 5½" x 3"
(457 x 140 x 76 mm)



130 RECESSED SHELF—REAR MOUNT

Shelf 16 gauge type 304 stainless steel, corners welded and ground smooth. 1" (25 mm) wide beveled satin finish trim. Interior glass blasted finish. Unit has four studs welded on back for rear mounting.

Overall Dimensions:
18" x 7" x 4"
(457 x 178 x 102 mm)

Wall Opening:
5½" x 16½"
(141 x 419 mm)



140 RECESSED SOAP DISH—REAR MOUNT

Soap dish 16 gauge stainless steel with satin finish. One-piece drawn construction with beveled trim and embossments for air circulation and drainage. Unit has two "T" nuts welded on back for rear mounting.

Overall Dimensions:
7¾" x 6" x 3"
(187 x 152 x 76 mm)

Wall Opening:
6½" x 5 x 2¾" min
(165 x 127 x 70 mm)



107 ONE-PIECE FRAMED MIRROR WITH ROUNDED CORNERS—FRONT MOUNT

One-piece 18 gauge stainless steel formed mirror with #8 mirror polish finish, integral frame, rounded corners and six mounting holes. For 20 gauge No. 8 mirror polish finish use suffix -14.

Overall Dimensions:
12" x 16" x ¼"
(305 x 406 x 6 mm)

INDEX OF PRODUCTS BY CATEGORY

For additional product suffix options use the index by model number on page 112-113.

BABY CHANGING STATIONS

Model	Page
9012	89
9013	24/86/89
9013-9	24/89
9014	88
9015	88
9016	89
9017	88
9017-9	88
9018	88
9018-9	88
9020	89

CUSTODIAL ACCESSORIES

Model	Page
0533-1	93/96
0533-2	93/96
0533-3	93/96
0533-4	93/96
0533-48	93/96
1306	93
1307-3	92
1307-4	92
1307-5	92
1307-6	92
1308-3	92
1308-4	92
1315-3	93
1315-4	93
1315-6	93
8215-3	93
8215-4	93
8215-5	93

FEMININE HYGIENE VENDORS AND DISPOSALS

Model	Page
0464	67
0468	67/68
0468-2	68
04684	68
0472	69
0472-1	69
0473	69
0473-1	69
0473-A	69
0473-1A	69
0852	69
0864	67
20470	22/69
204684	22/68
204684-9	22/68
20852	22/69
6468	39/67
64684	39/67
6471	39/68
9468	30
94684	30
9471	31/68

GRAB BARS

Model	Page
3400/3500	80
3700/3800	80
3700-W	80
3800-AW	80/98
3800-W	80
3801-18AW	80/98
3801-24AW	80/98
3801-36AW	80/98
3801-42AW	80/98
3801-48AW	80/98
3802-48AW	80/98
3874	81
3874-M2337	81

HAND DRYERS

Model	Page
0135	36/54
0141	54
0165	54
0184	55
0185-93	55
0192	53
0196-41	53
0195	55
0197	53
0198-93	55
0198-MH	36/54/99/106
0199-93	53
0661-1	16/52/61/65
0661-2	16/52/61/65
0663-1	17/52/61/65
0663-2	17/52/61/65
20199	25/55
20200	25/50/51
20201	25/51
64672-1	12/35/52
64672-2	12/35/52

HEALTHCARE ACCESSORIES

Model	Page
0198-MH	99
0349	97
0350	97
0501-X	98
0501-1	98
0501-2	98
0501-3	98
0501-4	94/98
0511	99
0512	99
0515	99
0533-1	93/96
0533-2	93/96
0533-3	93/96
0533-4	93/96
0533-48	93/96
0546	97
0547	97
0548	98
0548-9	98

0551	99
0556	99
0557	99
0558-1	99
0559	99
0815	98
0952	96
0952-B	96
0953	96
3800-AW	80/98
3801-18AW	80/98
3801-24AW	80/98
3801-36AW	80/98
3801-42AW	80/98
3801-48AW	80/98
3802-48AW	80/98
8154	96
8155	96
8156	96
8338	97
8339	97
8340	97

HOSPITALITY ACCESSORIES

Model	Page
0259-SS	105
0712	104
1201-A	105
1201-B	105
7306	105
7307-18	105
7307-24	105
7308	102
7312	102
7313	102
7314	103
7314-H	103
7315-H	103
7316	102
7317	103
7317-S	103
7322	104
7381	104
7383	100/104
7387	104
7388	104

MIRRORS

Model	Page
0535	63/64
0537	64
0600	63/64
0600-T	63/64
0605	62/64
0620	62/64
0625	62/64
0661-1	16/52/61/65
0661-2	16/52/61/65
0661-T	14/16/61/65
0661-FM-14	16/66
0661-FM-23	16/66

0663-1	17/52/61/65
0663-2	17/52/61/65
0663-T	17/61/65
20650	25/62/63/64
20650-B	64
20655	25/63/64
20655-B	64
8026	63/64
8287	63

PAPER TOWEL DISPENSERS

Model	Page
0210	47
0215	47
0245-SS	47
0439	47
0452	46
0452-9	46
0457	46
0457-9	46
045210A	46
045224	46
045224A	46
1002	49
20210	23
20452	23
204523A	23
6452	38
6452-9	38
645210	37
645210A	13/37
645210AC	13
6457	12/38
6457-00	12
6457-41	12
68523A	39
68523A-4	39
68523AC	39
68523AC-4	39
8165	47
8522	47
8523A	47
8523AC	47
9452	30
9457	30

PAPER TOWEL DISPENSERS & WASTE RECEPTACLES

Model	Page
0462-AD	42
0462-AD-9	42
0467	44
0467-2	44
0467-9	44
0469	40/42
0469-2	42
0469-9	42
0469-BL	42
04692	43
04692A	43

046921	45
046921A	45
046924A	45
046926	44
04697	43
04697-4	43
04697-9	43
04697-BL	43
1001	49
204623	20
204623-9	20
20469	18/20
20469-9	20
204692A	21
2046921A	21
4004	49
645210A	13
645210A-00	13
645210A-41	13
645210AC	13
645210AC-00	13
645210AC-41	13
6462	13/34
6462-00	13
6462-41	10/13
6462-2	34
6462-9	34
64623	13/36
64623-00	13
64623-41	13
64623-9	36
6467	13/32/34
6467-00	13
6467-41	13
6467-9	34
64672	12/35
64672-1-00	12
64672-1-41	12
64672-1	12/35/52
64672-2	12/35/52
64672-2-00	12
64672-2-41	12
64676	34
64676-2	34
64676-9	34
646924A	35
64696	37
64696-6	37
64696-9	37
64696A	12/37
64696A-00	12
64696A-41	12
64696AC	12
64696AC-00	12
64696AC-41	12
9462	28
94623	30
9467	29
94676	29
9469	26/28
94696	29
94696A	29

SECURITY ACCESSORIES

Model	Page
101-14	108
104	108
105-14	108
107	109
0198-MH	106
110	107
110-1	107
110-13	107
110-A	107
120	107
122	106
123	106
127	109
128-1	106
129	108
130	109
140	109
150	107
160	107
161	107
162	107
163	107
164	107
165	107
166	107
167	107
168	107
169	107

SHELVES

Model	Page
0412	91
0690	90
0692	90/91
0694	90/91
0698	91
20692	25/90/91

SHOWER/TUB ACCESSORIES

Model	Page
0010	84
0398	82
0399	82
0400	82
0401	82
0410-Z	82
1200-SHU	84
1200-V	84
1201-A	82/83
1201-B	83
1204	83
1214	83
1224	83
7404-B	83
7404-S	83
7410-B	83
7410-S	83
8202	85

8203	84
8204	84
8205-L	85
8205-R	85
8206-L	85
8206-R	85
8206-SC-L	85
8206-SC-R	85
8207	84
8208-L	84
8208-R	84
8209	85
8358	84

SOAP DISPENSERS

Model	Page
0326	61
0332	59
0332-C	59
0332-CD	59
0332-D	59
0334-B	59
0334-S	59
0335-B	59
0335-S	59
0336	59
0336-D	59
0338	59
0339	59
0345	60
0347	60
0349	97
0350	97
0360	58
0361	61
0362	58
0362-41	58
0390	57
0390-1A	57
0390-1A-41	57
0390-1AC	57
0390-1AC-41	57
0390-6-1A	57
0390-6-1A-41	57
0390-6-1AC	57
0390-6-1AC-41	57
0390-ARK	57
0390-BR	57
0390-R	57
0391-1A	57
0391-1A-41	57
0391-1AC	57
0391-1AC-41	57
0391-6-1A	57
0391-6-1A-41	57
0391-6-1AC	57
0391-6-1AC-41	57
0393-1A	57
0393-1A-41	57
0393-1AC	57
0393-1AC-41	57
0393-6-1A	57

0393-6-1A-41	57
0393-6-1AC	57
0393-6-1AC-41	57
0393-R	57
0394-1A	57
0394-1A-41	57
0394-1AC	56/57
0394-1AC-41	56/57
0394-6-1A	57
0394-6-1A-41	57
0394-6-1AC	57
0394-6-1AC-41	57
0397	58
0397-1A	57
0397-1AC	56/57
0397-1A-41	57
0397-1AC-41	57
0661-1	16/52/61/65
0661-2	16/52/61/65
0661-T	14/16/61/65
0663-1	17/52/61/65
0663-2	17/52/61/65
0663-T	17/61/65
20333	58
20334	58
20363	24/60
20364	24/60
20365	24/60
5001-SS	60
6326	39
9326	31
9343	24/31/60

SPECIALTY ACCESSORIES

Model	Page
0002-SM	71
0002-ASM	71
0258-SS	72
0259-SS	72
0481	73
0481-HC	73
04813	73
04813-HC	73
0482	73
04823	73
048234	72
0483	73
04833	73
0484	72
0484-HC	72
0485	72
0486	72
0712	71
0714	70
0719	70
0721-Z	71
0735-Z	71
0740-Z	70
0745-Z	70
0751	71
0751-A	71

0755-SS	72
0755-Z	73
0760-Z	72
0785-Z	70/71
7301-B	71
7301-S	71
7310-B	73
7310-S	73
7311-B	73
7320	71
7335	71
7340	70
7345	70
7355	72
7382	71
7385	70
8425	70

TOILET TISSUE DISPENSERS

Model	Page
0030	76
0031	76
0032	76
0039	77
0040	77
0042	77
0263-1	78
0264-1	78
0267	78
0402-Z	79
0477	79
0477-SM	79
0697-GAL	78
0705-Z	79
0710	78
0715	78
20030	23
20031	23
20477-SM	23/79
6477	39
7303	79
7305-2B	78
7305-2S	78
7305-B	78
7305-S	78
7402	77
7402-H	77
74022	77
74022-H	74/77
7403	78
7403-B	78
7403-S	78
9030	31/76
9031	31
9477	31
9477-SM	31
R-009	79

WASTE RECEPTACLES

Model	Page
0458	46
0458-9	46
04733	46
0810	48
0811	48
0812	48
0813	48
0825	48
0826	48
0827	48
0828	48
0829	48
1000	49
1000A	49
1003	49
20458	22
20826	22
20826-T	22
6459	38
6474	12/38
6474-00	12
6474-2	38
6474-41	12
9459	30
94623	30
9474	30

INDEX OF PRODUCTS BY MODEL NUMBER

MODEL	PAGE	MODEL	PAGE	MODEL	PAGE	MODEL	PAGE	MODEL	PAGE
0002-SM	71	0390-6-1A-41	57	045224A-6	46	0481-HC	73	0712	71/104
0002-ASM	71	0390-6-1AC	57	045224A-9	46	04813	73	0714	70
0010	84	0390-6-1AC-41	57	045224AC	46	04813-HC	73	0715	78
0030	76	0390-ARK	57	045224AC-6	46	0482	73	0719	70
0031	76	0390-BR	57	045224AC-9	46	04823	73	0721-Z	71
0032	76	0390-R	57	0457	46	048234	72	0735-Z	71
0039	77	0391-1A	57	0457-9	46	0483	73	0740-Z	70
0040	77	0391-1A-41	57	0458	46	04833	73	0745-Z	70
0042	77	0391-1AC	57	0458-9	46	0484	72	0751	71
0135	36/54	0391-1AC-41	57	0462-AD	42	0484-HC	72	0751-A	71
0141	54	0391-6-1A	57	0462-AD-9	42	0485	72	0755-SS	72
0165	54	0391-6-1A-41	57	0464	67	0486	72	0755-Z	73
0184	55	0391-6-1AC	57	0467	44	0501-X	98	0760-Z	72
0185-93	55	0391-6-1AC-41	57	0467-2	44	0501-1	98	0785-Z	70/71
0192	53	0393-1A	57	0467-9	44	0501-2	98	0810	48
0195	55	0393-1A-41	57	0468	67/68	0501-3	98	0811	48
0196-41	53	0393-1AC	57	0468-2	68	0501-4	94/98	0812	48
0197	53	0393-1AC-41	57	04684	68	0511	99	0813	48
0198-93	55	0393-6-1A	57	0469	40/42	0512	99	0815	98
0198-MH	36/54/99/106	0393-6-1A-41	57	0469-2	42	0515	99	0825	48
0199-93	53	0393-6-1AC	57	0469-9	42	0533-1	93/96	0826	48
0210	47	0393-6-1AC-41	57	0469-BL	42	0533-2	93/96	0827	48
0215	47	0393-R	57	04692	43	0533-3	93/96	0828	48
0245-SS	47	0394-1A	57	04692-6	43	0533-4	93/96	0829	48
0258-SS	72	0394-1A-41	57	04692-9	43	0533-48	93/96	0852	69
0259-SS	72/105	0394-1AC	56/57	04692A	43	0535	63/64	0864	67
0263-1	78	0394-1AC-41	56/57	04692A-6	43	0537	64	0952	96
0264-1	78	0394-6-1A	57	04692A-9	43	0546	97	0952-B	96
0267	78	0394-6-1A-41	57	04692AC	43	0547	97	0953	96
0326	61	0394-6-1AC	57	04692AC-6	43	0548	98	101-14	108
0332	59	0394-6-1AC-41	57	04692AC-9	43	0548-9	98	104	108
0332-C	59	0397	58	046921	45	0551	99	105-14	108
0332-CD	59	0397-1A	57	046921-6	45	0556	99	107	109
0332-D	59	0397-1AC	56/57	046921-9	45	0557	99	110	107
0334-B	59	0397-1A-41	57	046921A	45	0558-1	99	110-1	107
0334-S	59	0397-1AC-41	57	046921A-6	45	0559	99	110-13	107
0335-B	59	0398	82	046921A-9	45	0600	63/64	110-A	107
0335-S	59	0399	82	046921AC	45	0600-T	63/64	120	107
0336	59	0400	82	046921AC-6	45	0605	62/64	122	106
0336-D	59	0401	82	046921AC-9	45	0620	62/64	123	106
0338	59	0402-Z	79	046924A	45	0625	62/64	127	109
0339	59	0410-Z	82	046926	44	0661-1	16/52/61/65	128-1	106
0345	60	0412	91	04697	43	0661-2	16/52/61/65	129	108
0347	60	0439	47	04697-4	43	0661-T	14/16/61/65	130	109
0349	97	0452	46	04697-9	43	0661-FM-14	16/66	140	109
0350	97	0452-9	46	04697-BL	43	0661-FM-23	16/66	159	107
0360	58	045210A	46	0472	69	0663-1	17/52/61/65	160	107
0361	61	045210A-6	46	0472-1	69	0663-2	17/52/61/65	161	107
0362	58	045210A-9	46	0473	69	0663-T	17/61/65	162	107
0362-41	58	045210AC	46	0473-1	69	0690	90	163	107
0390	57	045210AC-6	46	0473-A	69	0692	90/91	164	107
0390-1A	57	045210AC-9	46	0473-1A	69	0694	90/91	165	107
0390-1A-41	57	045224	46	04733	46	0697-GAL	78	166	107
0390-1AC	57	045224-6	46	0477	79	0698	91	167	107
0390-1AC-41	57	045224-9	46	0477-SM	79	0705-Z	79	168	107
0390-6-1A	57	045224A	46	0481	73	0710	78	169	107

MODEL	PAGE	MODEL	PAGE	MODEL	PAGE	MODEL	PAGE	MODEL	PAGE
1000	49	2046921AC	21	64623-41	13	7310-S	73	8339	97
1000A	49	2046921AC-6	21	6467	13/32/34	7311-B	73	8340	97
1001	49	2046921AC-9	21	6467-9	34	7312	102	8358	84
1002	49	20470	22/69	6467-00	13	7313	102	8425	70
1003	49	20477-SM	23/79	6467-41	13	7314	103	8522	47
1200-SHU	84	20650	25/62/63/64	64672	12/35	7314-H	103	8523A	47
1200-V	84	20650-B	64	64672-1	12/35/52	7315-H	103	8523AC	47
1201-A	82/83/105	20655	25/63/64	64672-1-00	12/52	7316	102	9012	89
1201-B	83/105	20655-B	64	64672-1-41	12/52	7317	103	9013	24/86/89
1204	83	20692	25/90/91	64672-2	12/35/52	7317-S	103	9013-9	24/89
1214	83	20826	22	64672-2-00	12/52	7320	71	9014	88
1224	83	20826-T	22	64672-2-41	12/52	7322	104	9015	88
1306	93	20852	22/69	64676	34	7335	71	9016	89
1307-3	92	3400 SERIES	80	64676-2	34	7340	70	9017	88
1307-4	92	3500 SERIES	80	64676-9	34	7345	70	9017-9	88
1307-5	92	3700 SERIES	80	6468	39/67	7355	72	9018	88
1307-6	92	3700-W	80	64684	39/67	7381	104	9018-9	88
1308-3	92	3800 SERIES	80	646924A	35	7382	71	9020	89
1308-4	92	3800-AW SERIES	80/98	646924A-9	35	7383	100/104	9030	31/76
1315-3	93	3800-W	80	646924AC	35	7385	70	9031	31
1315-4	93	3801-18AW	80/98	646924AC-9	35	7387	104	9326	31
1315-6	93	3801-24AW	80/98	64696	37	7388	104	9343	24/31/60
20030	23	3801-36AW	80/98	64696-6	37	7402	77	9452	30
20031	23	3801-42AW	80/98	64696-9	37	7402-H	77	9457	30
20199	25/55	3801-48AW	80/98	64696A	12/37	74022	77	9459	30
20200	25/50/51	3802-48AW	80/98	64696A-6	37	74022-H	74	9462	28
20201	25/51	3874	81	64696A-9	37	7403	78	94623	30
20210	23	3874-M2337	81	64696A-00	12	7403-B	78	9467	29
20333	58	4004	49	64696A-41	12	7403-S	78	94676	29
20334	58	5001-SS	60	64696AC	12	7404-B	83	9468	30
20363	24/60	6326	39	64696AC-6	37	7404-S	83	94684	30
20364	24/60	6452	38	64696AC-9	37	7410-B	83	9469	26/28
20365	24/60	6452-9	38	64696AC-00	12	7410-S	83	94696	29
20452	23	645210	37	64696AC-41	12	8026	63/64	94696A	29
204523A	23	645210A	13/37	6471	39/68	8154	96	94696A-6	29
204523A-6	23	645210A-6	37	6474	12/38	8155	96	94696A-9	29
204523A-9	23	645210A-9	37	6474-2	38	8156	96	94696AC	29
204523AC	23	645210A-00	13	6474-00	12	8165	47	94696AC-6	29
204523AC-6	23	645210A-41	13	6474-41	12	8202	85	94696AC-9	29
204523AC-9	23	645210AC	13	6477	39	8203	84	9471	31/68
20458	22	645210AC-6	37	68523A	39	8204	84	9474	30
204623	20	645210AC-9	37	68523A-4	39	8205-L	85	9477	31
204623-9	20	645210AC-00	13	68523AC	39	8205-R	85	9477-SM	31
204684	22/68	645210AC-41	13	68523AC-4	39	8206-L	85	R-009	79
204684-9	22/68	6457	12/38	7301-B	71	8206-R	85		
20469	18/20	6457-00	12	7301-S	71	8206-SC-L	85		
20469-9	20	6457-41	12	7303	79	8206-SC-R	85		
204692A	21	6459	38	7305-2B	78	8207	84		
204692A-6	21	6462	13/34	7305-2S	78	8208-L	84		
204692A-9	21	6462-2	34	7305-B	78	8208-R	84		
204692AC	21	6462-9	34	7305-S	78	8209	85		
204692AC-6	21	6462-00	13	7306	105	8215-3	93		
204692AC-9	21	6462-41	10/13	7307-18	105	8215-4	93		
2046921A	21	64623	13/36	7307-24	105	8215-5	93		
2046921A-6	21	64623-9	36	7308	102	8287	63		
2046921A-9	21	64623-00	13	7310-B	73	8338	97		





441 Saw Mill River Rd., Yonkers, NY 10701
Tel: 914.476.9000 • Fax: 914.476.0688 • americanspecialties.com

© 2019 American Specialties, Inc., an ASI Group Company